


2 Bedroom Apartment for Sale in Kiti, Larnaca District

Discover peaceful living in this beautifully designed 2-bedroom ground floor apartment with its own private garden, located in a premium gated community in the Kiti area of Larnaca. Set within a low-rise two-storey building, this home offers privacy, functionality, and direct access to outdoor space — ideal for families, couples, or as a holiday retreat. 

The development blends apartments and luxury villas, all surrounded by landscaped common areas, a shared swimming pool, and a children’s playground — perfect for a balanced lifestyle.

Key Features:

- Private garden
- Part of a secure gated community
- Common swimming pool & c...

Property Info

Covered Area **93**
 Covered Veranda **14**
 Total Number of Floors **2**

Plot / Area Info

Pool **Common, Yes**
 Parking **Covered, Yes**

Additional info

Reference Number **6744**
 Property type **Apartment**
 Bathrooms **2**

Amenities

- Parking

Location

Location: Kiti Region: **Larnaca**
 Coordinates: **34.837371490729 / 33.576965343472**

Price: €263 000 + VAT

VAT for this property is **€13,150** or **€49,970**. VAT usually is 19%. If it is your first purchase of property, you can have VAT reduced to 5% for the first 150sq.m. of the property.

VAT	Excluded	Title transfer fee	~€7 120.00	Common expenses	None
		Price per SQM	€2 828.00/m²		

Representative: RealDeal Estates

Registration number	1311	Email	info@realdeal.cy
License number	347/E	Legal name	Esperia Estates (Limassol-Paphos) Limited
Phone: +35725255505, +35794001333			

Price change history

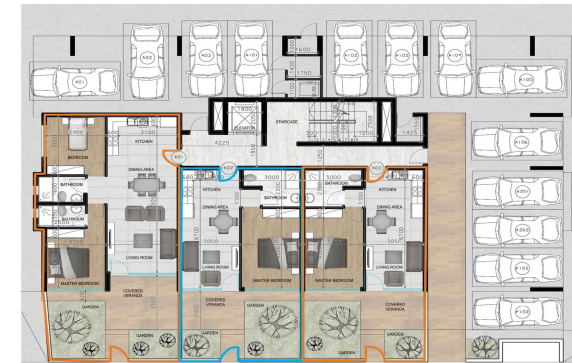
€220 000 on Jun 11, 2025
 €262 000 on Sep 12, 2025
 €263 000 on Dec 13, 2025





BLOCK A

GROUND FLOOR



- A01**
 2 Bedrooms
 2 Bathrooms
 79 SQM Internal Area
 14.5 SQM Covered Veranda
 20 SQM Garden
- A02**
 1 Bedroom
 1 Bathroom
 50 SQM Internal Area
 10 SQM Covered Veranda
 18.5 SQM Garden
- A03**
 1 Bedroom
 1 Bathroom
 50 SQM Internal Area
 10 SQM Covered Veranda
 19.5 SQM Garden

Areas & Plans are not final and are subject to modifications