

## 3 Bedroom House for Sale in Episkopi Pafou, Paphos District

We present to your attention a luxury residential complex in the beautiful hills of Episkopi. Here you can become the owner of one of the 9 luxury villas that perfectly fit into the picturesque landscape of this place. Our offer offers you the opportunity to purchase a villa in this exclusive complex where you can enjoy privacy and luxury among lush almond and olive trees. Each villa in this complex has been designed with the utmost attention to detail and built according to the highest quality standards. Inside you will find spacious living rooms, modern kitchens and comfortable bedrooms created using only the best materials. Natural light floods every corner of the villa, creating a war...

### Property Info

Covered Area	<b>199</b>
Furnishing	<b>Furnished</b>
Energy Efficiency	<b>A</b>
Air Conditioning	<b>All rooms, Yes</b>

### Plot / Area Info

Parking	<b>Covered, Yes</b>
---------	---------------------

### Additional info

Reference Number	<b>132596</b>
Property type	<b>House</b>
Condition	<b>Brand New</b>
Bathrooms	<b>3</b>

### Amenities

#### Location

**Location:** Episkopi Pafou Region: **Paphos**

## Price: €520 000 + VAT

VAT for this property is **€43,926** or **€98,800**. VAT usually is 19%. If it is your first purchase of property, you can have VAT reduced to 5% for the first 150sq.m. of the property.

VAT	<b>Excluded</b>	Title transfer fee	<b>None</b>	Common expenses	<b>None</b>
		Price per SQM	<b>€2 613.00/m²</b>		

## Representative: DOM Real Estate

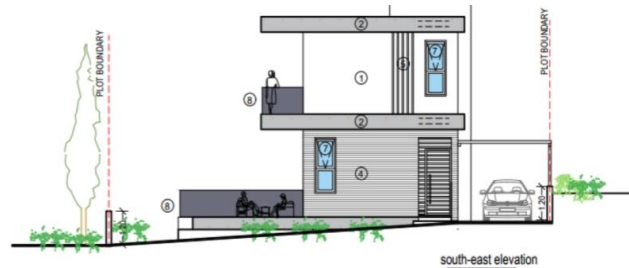
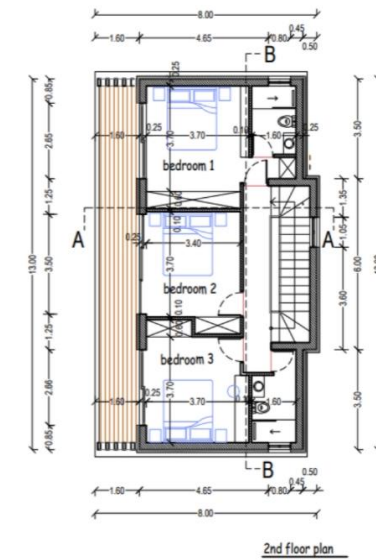
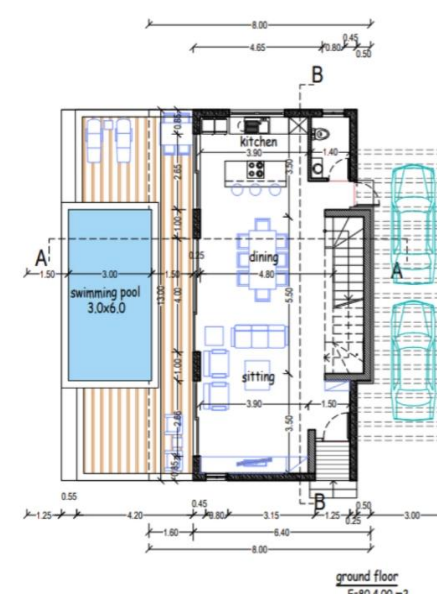
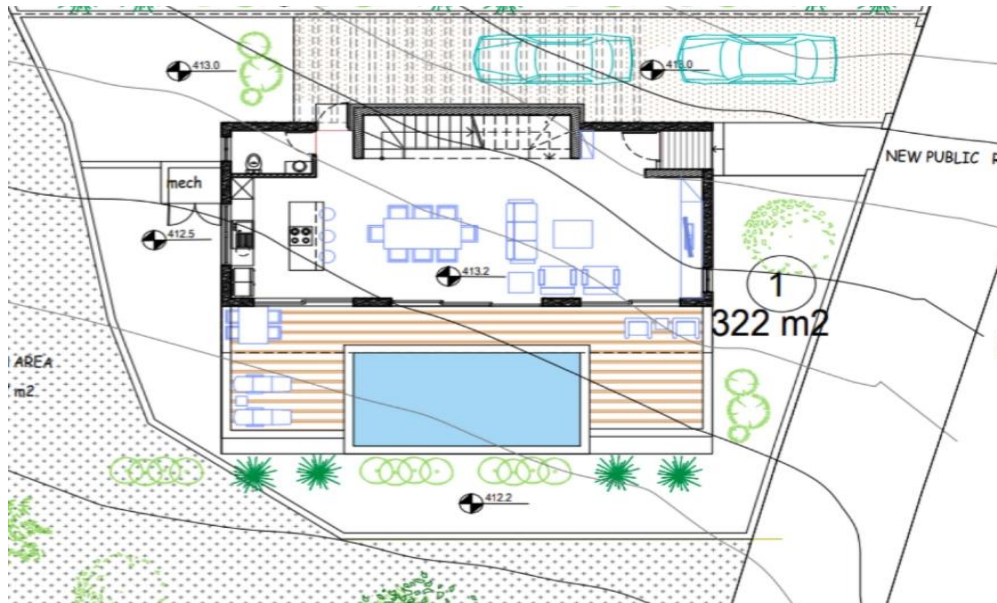
Registration number	<b>397</b>	Email	<b>info@dom.com.cy</b>
License number	<b>338/E</b>	Legal name	<b>N/A</b>
Phone: +35796644888			

## Price change history

€520 000 on Jun 17, 2025







- ### MATERIALS
- 1 white render
  - 2 gray render
  - 3 fair-face concrete
  - 4 board formed concrete
  - 5 louvers Sx20x.
  - 6 aluminium cladding
  - 7 aluminium windows
  - 8 glass balustrade
  - 9 glass balustrade (with sandblasting)
  - 10 green wall
  - 11 deck
  - 12 hpl
  - 13 timber cladding