

2 Bedroom Apartment for Sale in Paphos - Universal

Two bedroom apartment for sale in Konia, Limassol. The complex consists of six apartments. Each apartment combines high-end design, finishes and the latest trends using high-quality thermal insulation materials, finishes and plumbing. The apartments have functional layouts and spacious verandas. The energy efficiency of the building is class A. The project provides for the installation of its own solar water heater. Convenient storage rooms and parking spaces are provided for each apartment. The complex is located next to the highway and not far from the Main Hospital of Paphos. All necessary infrastructure is also nearby.

Property Info

| | |
|-------------------|--------------------|
| Covered Area | 111 |
| Furnishing | Unfurnished |
| Energy Efficiency | A |
| Air Conditioning | No |

Plot / Area Info

| | |
|---------|---------------------|
| Parking | Covered, Yes |
|---------|---------------------|

Additional info

| | |
|------------------|---------------------------|
| Reference Number | 163743 |
| Property type | Apartment |
| Condition | Under Construction |
| Bathrooms | 2 |

Amenities

Location

Location: Paphos - Universal Region: **Paphos**

Price: €252 000 + VAT

VAT for this property is **€12,600** or **€47,880**. VAT usually is 19%. If it is your first purchase of property, you can have VAT reduced to 5% for the first 150sq.m. of the property.

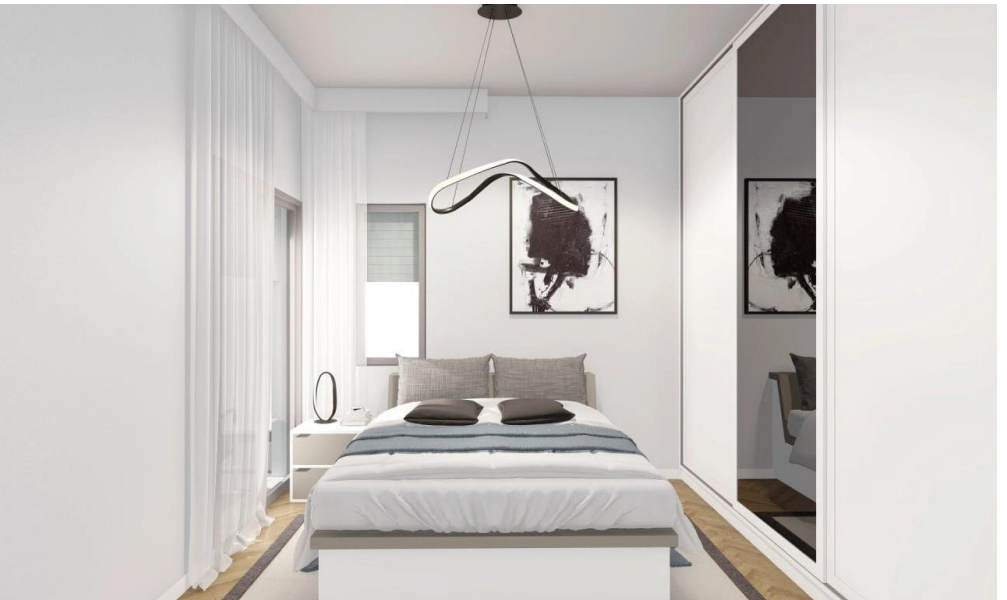
| | | | | | |
|-----|-----------------|--------------------|---------------------|-----------------|-------------|
| VAT | Excluded | Title transfer fee | None | Common expenses | None |
| | | Price per SQM | €2 270.00/m² | | |

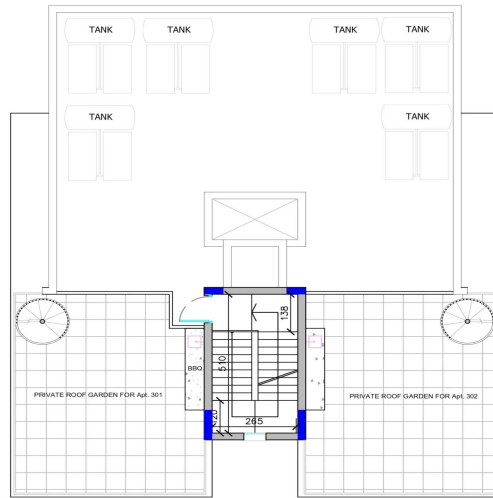
Representative: DOM Real Estate

| | | | |
|---------------------|--------------|------------|------------------------|
| Registration number | 397 | Email | info@dom.com.cy |
| License number | 338/E | Legal name | N/A |
| Phone: +35796644888 | | | |

Price change history

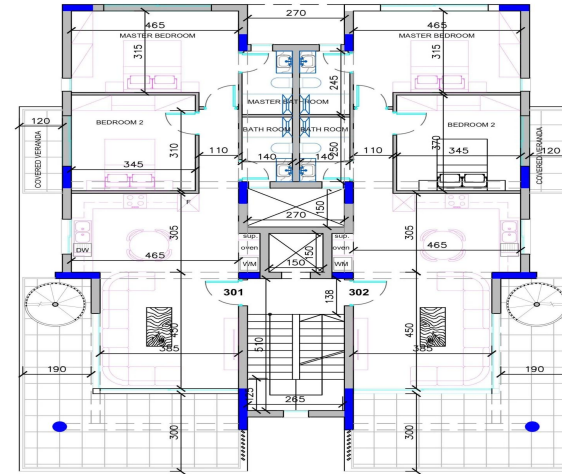
€252 000 on Jun 28, 2025





Roof

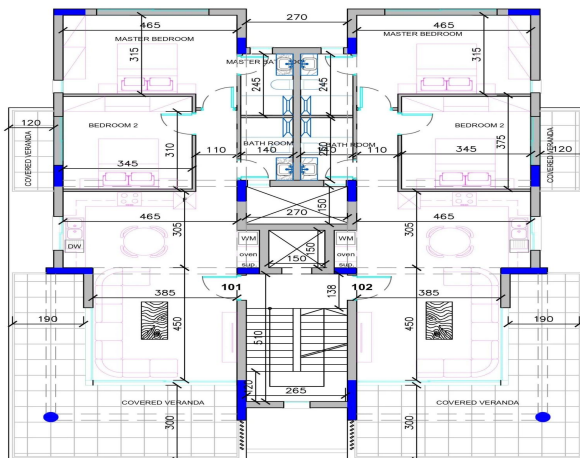
| | |
|------------------|-----------------------|
| ROOF | 128.02 m ² |
| ROOF GARDEN(301) | 45.24 m ² |
| ROOF GARDEN(302) | 46.49 m ² |
| COMMON AREAS | 17.92 m ² |



3rd Floor

FLAT 301
COVERED AREA E=80.77 M2
COVERED VERANDAS E=30.14 M2

FLAT 302
COVERED AREA E=80.77 M2
COVERED VERANDAS E=30.14 M2
COMMON AREAS E=21.42 M2
LIFT E=4.00 M2



1st & 2nd Floor

FLAT 101
COVERED AREA E=80.77 M2
COVERED VERANDAS E=30.14 M2

FLAT 102
COVERED AREA E=80.77 M2
COVERED VERANDAS E=30.14 M2
COMMON AREAS E=21.42 M2

FLAT 201
COVERED AREA E=80.77 M2
COVERED VERANDAS E=30.14 M2

FLAT 202
COVERED AREA E=80.77 M2
COVERED VERANDAS E=30.14 M2
COMMON AREAS E=21.42 M2