

3 Bedroom Apartment for Sale in Paphos - Universal

Apartments for sale in a new complex in the Universal area, Paphos. It offers an exceptional location and a modern signature design focused on luxurious, modern, open-plan living. The complex consists of 7 two-bedroom apartments, 1 one-bedroom apartment and 2 three-bedroom apartments ranging from 55 to 104 m2, spread over three floors. Luxury amenities include smart technology, video intercom, sea views, covered parking, storage room and communal pool. Each apartment has a unique modern layout, harmoniously combining space and natural lighting, which ensures a relaxed sophistication of life. Get a chance to become the owner of these exclusive apartments and improve your lifestyle.

Property Info

Covered Area	175
Furnishing	Unfurnished
Energy Efficiency	A
Air Conditioning	No

Plot / Area Info

Parking **Covered, Yes**

Additional info

Reference Number	163647
Property type	Apartment
Condition	Brand New
Bathrooms	2

Amenities

Location

Location: Paphos - Universal Region: **Paphos**

Price: €410 000 + VAT

VAT for this property is **€28,700** or **€77,900**. VAT usually is 19%. If it is your first purchase of property, you can have VAT reduced to 5% for the first 150sq.m. of the property.

VAT	Excluded	Title transfer fee	None	Common expenses	None
		Price per SQM	€2 343.00/m²		

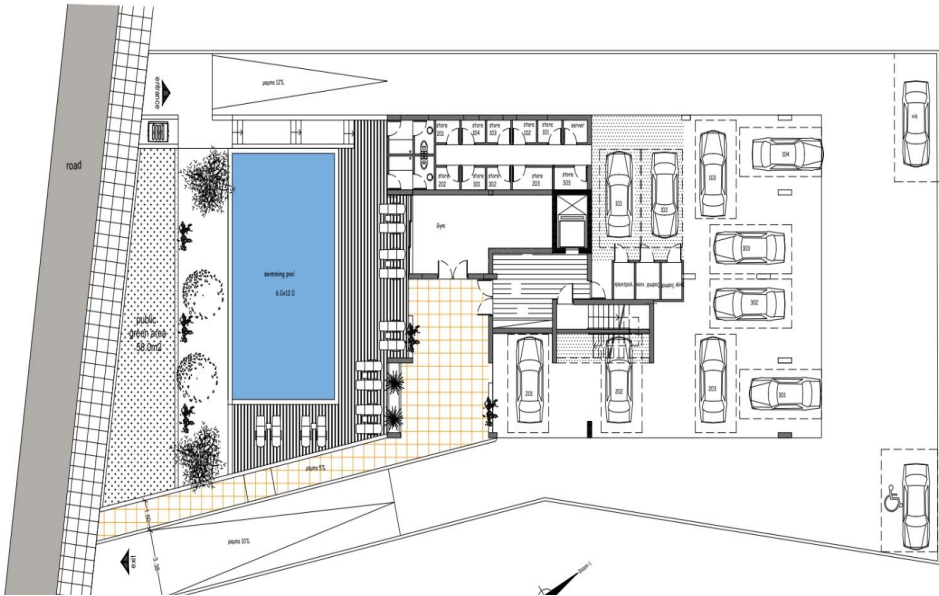
Representative: DOM Real Estate

Registration number	397	Email	info@dom.com.cy
License number	338/E	Legal name	N/A
Phone: + 35796644888			

Price change history

€410 000 on Jun 28, 2025

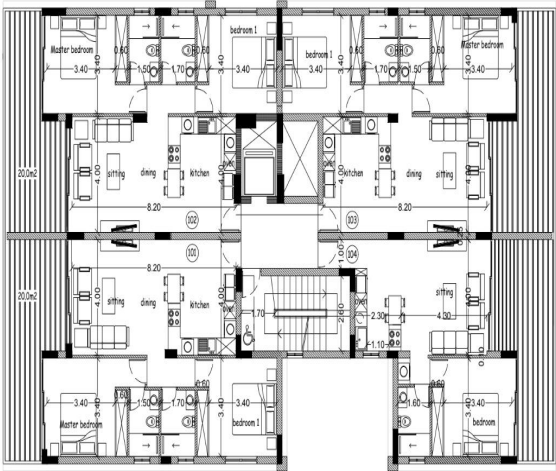




100.00 m ²	Flat 101
Living 80.00 m ²	Flat 102
Veranda 20.00 m ²	Flat 103
First Floor	

2 Bedrooms/ 2 Bathrooms
Covered Parking

Master Bedroom	3.40x4.00
• En-suite	2.40x1.50
Bedroom 1	3.40x4.00
Living	4.00x3.75
Kitchen & Dining	4.00x4.45
Guest Bathroom	2.40x1.70
Balcony	7.50x3.10



1 Bedroom/ 1 Bathroom
Covered Parking

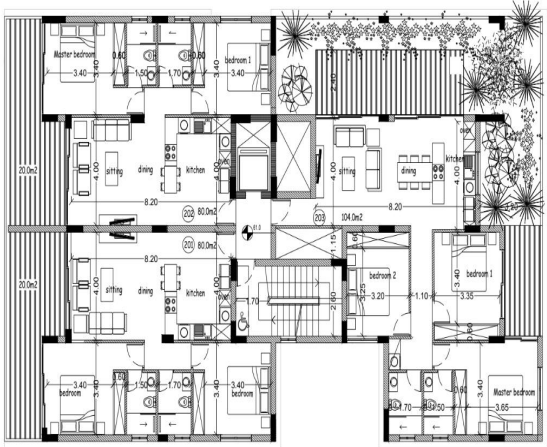
Bedroom	3.40x4.00
Living	4.00x4.30
Kitchen & Dining	4.00x2.30
Bathroom	2.40x1.60
Balcony	7.50x3.10

75.00 m ²	Flat 104
Living 55.00 m ²	
Veranda 20.00 m ²	

100.00 m ²	Flat 201
Living 80.00 m ²	Flat 202
Veranda 20.00 m ²	
Second Floor	

2 Bedrooms/ 2 Bathrooms
Covered Parking

Master Bedroom	3.40x4.00
• En-suite	2.40x1.50
Bedroom 1	3.40x4.00
Living	4.00x3.75
Kitchen & Dining	4.00x4.45
Guest Bathroom	2.40x1.70
Balcony	7.50x3.10



3 Bedrooms/ 2 Bathrooms
Covered Parking

Master Bedroom	3.40x4.25
• En-suite	2.40x1.50
Bedroom 1	4.00x3.35
Bedroom 2	3.85x3.20
Living	4.00x4.00
Kitchen & Dining	4.00x4.20
Guest Bathroom	2.40x1.70
Balcony	1.95x4.00 - 7.60x2.40

129.00 m ²	Flat 203
Living 104.00 m ²	
Veranda 25.00 m ²	