

## 2 Bedroom Apartment for Sale in Paphos - Universal

Apartments for sale in a new complex in the Universal area, Paphos. It offers an exceptional location and a modern signature design focused on luxurious, modern, open-plan living. The complex consists of 7 two-bedroom apartments, 1 one-bedroom apartment and 2 three-bedroom apartments ranging from 55 to 104 m2, spread over three floors. Luxury amenities include smart technology, video intercom, sea views, covered parking, storage room and communal pool. Each apartment has a unique modern layout, harmoniously combining space and natural lighting, which ensures a relaxed sophistication of life. Get a chance to become the owner of these exclusive apartments and improve your lifestyle.

### Property Info

Covered Area  
Furnishing  
Energy Efficiency  
Air Conditioning

**100**  
**Unfurnished**  
**A**  
**No**

### Plot / Area Info

Parking

**Covered, Yes**

### Additional info

Reference Number  
Property type  
Condition  
Bathrooms

**163645**  
**Apartment**  
**Brand New**  
**2**

### Amenities

#### Location

**Location:** Paphos - Universal Region: **Paphos**

**Price: €380 000 + VAT**

VAT for this property is **€19,000** or **€72,200**. VAT usually is 19%. If it is your first purchase of property, you can have VAT reduced to 5% for the first 150sq.m. of the property.

VAT	<b>Excluded</b>	Title transfer fee	<b>None</b>	Common expenses	<b>None</b>
		Price per SQM	<b>€3 800.00/m<sup>2</sup></b>		

**Representative: DOM Real Estate**

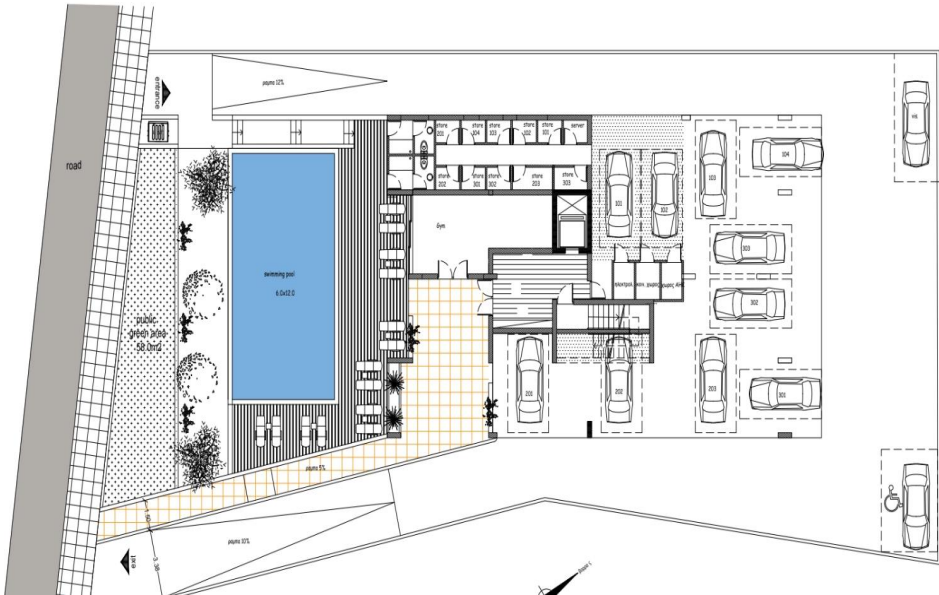
Registration number	<b>397</b>	Email	<b>info@dom.com.cy</b>
License number	<b>338/E</b>	Legal name	<b>N/A</b>
Phone: + <b>35796644888</b>			

**Price change history**

€380 000 on Jun 28, 2025



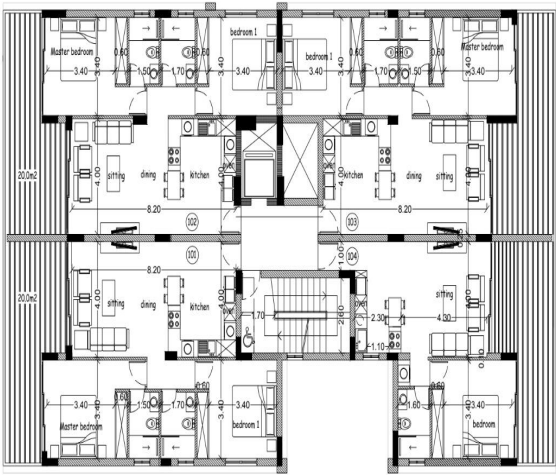




100.00 m <sup>2</sup>	Flat 101
Living 80.00 m <sup>2</sup>	Flat 102
Veranda 20.00 m <sup>2</sup>	Flat 103

2 Bedrooms/ 2 Bathrooms  
Covered Parking

Master Bedroom	3.40x4.00
• En-suite	2.40x1.50
Bedroom 1	3.40x4.00
Living	4.00x3.75
Kitchen & Dining	4.00x4.45
Guest Bathroom	2.40x1.70
Balcony	7.50x3.10



1 Bedroom/ 1 Bathroom  
Covered Parking

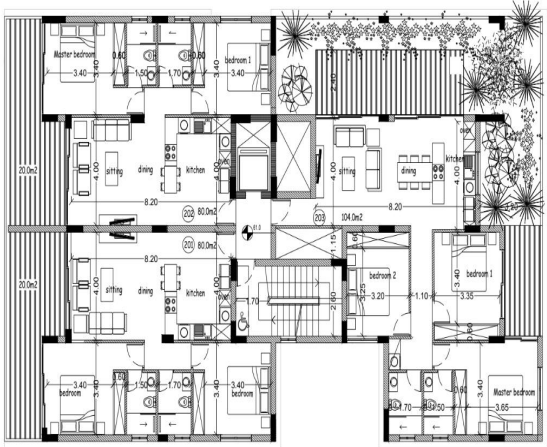
Bedroom	3.40x4.00
Living	4.00x4.30
Kitchen & Dining	4.00x2.30
Bathroom	2.40x1.60
Balcony	7.50x3.10

75.00 m <sup>2</sup>	Flat 104
Living 55.00 m <sup>2</sup>	
Veranda 20.00 m <sup>2</sup>	

100.00 m <sup>2</sup>	Flat 201
Living 80.00 m <sup>2</sup>	Flat 202
Veranda 20.00 m <sup>2</sup>	

2 Bedrooms/ 2 Bathrooms  
Covered Parking

Master Bedroom	3.40x4.00
• En-suite	2.40x1.50
Bedroom 1	3.40x4.00
Living	4.00x3.75
Kitchen & Dining	4.00x4.45
Guest Bathroom	2.40x1.70
Balcony	7.50x3.10



3 Bedrooms/ 2 Bathrooms  
Covered Parking

Master Bedroom	3.40x4.25
• En-suite	2.40x1.50
Bedroom 1	4.00x3.35
Bedroom 2	3.85x3.20
Living	4.00x4.00
Kitchen & Dining	4.00x4.20
Guest Bathroom	2.40x1.70
Balcony	1.95x4.00 - 7.60x2.40

129.00 m <sup>2</sup>	Flat 203
Living 104.00 m <sup>2</sup>	
Veranda 25.00 m <sup>2</sup>	