


## 2 Bedroom Apartment for Sale in Geroskipou, Paphos District

This beautifully designed two-bedroom apartment offers a refined living experience in one of Paphos’s most desirable locations. Just moments from the beach, Kings Avenue Mall, historical sites, and the international airport, it combines everyday convenience with relaxed Mediterranean living. 

The apartment features two spacious bedrooms, modern finishes, and large windows that fill the space with natural light. A standout feature is the private garden — perfect for outdoor dining, quiet mornings, or simply enjoying the Cyprus sunshine in your own green retreat.

Residents benefit from access to a range of on-site amenities, including a fully equipped gym, a swimming pool, ...

### Property Info

Covered Area	<b>106</b>
Covered Veranda	<b>13</b>
Uncovered Veranda	<b>13</b>
Total Number of Floors	<b>1</b>

### Plot / Area Info

Pool	<b>Common, Yes</b>
Parking	<b>Covered, Yes</b>

### Additional info

Reference Number	<b>7333</b>
Property type	<b>Apartment</b>
Bathrooms	<b>2</b>

### Amenities

- Parking

### Location

**Location:** Geroskipou Region: **Paphos**  
 Coordinates: **34.755558566395 / 32.433303580472**

## Price: €501 271 + VAT

VAT for this property is **€25,064** or **€95,241**. VAT usually is 19%. If it is your first purchase of property, you can have VAT reduced to 5% for the first 150sq.m. of the property.

VAT	<b>Excluded</b>	Title transfer fee	<b>~€16 650.84</b>	Common expenses	<b>None</b>
		Price per SQM	<b>€4 729.00/m<sup>2</sup></b>		

## Representative: RealDeal Estates

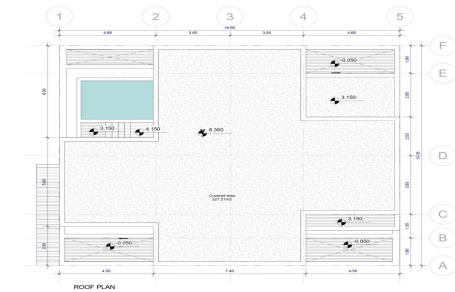
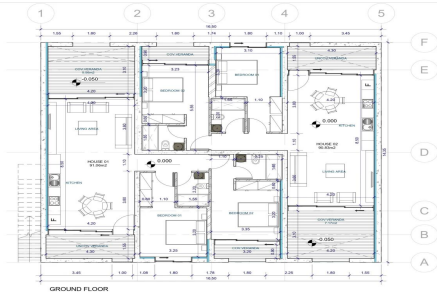
Registration number	<b>1311</b>	Email	<b>info@realdeal.cy</b>
License number	<b>347/E</b>	Legal name	<b>Esperia Estates (Limassol-Paphos) Limited</b>
Phone: <b>+35725255505, +35794001333</b>			

## Price change history

€496 308 on Jul 2, 2025  
 €501 271 on Oct 3, 2025







**TYPE D**

Ground Floor Built Area:	181.89m <sup>2</sup>
First Floor Built Area:	120.68m <sup>2</sup>
Covered Built Area:	321.21m <sup>2</sup>
TOTAL BUILT AREA:	312.47m <sup>2</sup>