

3 Bedroom House for Sale in Episkopi Pafou, Paphos District

Three-bedroom villa for sale in Episkopi, Pafos. The interior spaces, which are perfectly planned to the highest standards, will ensure your comfortable stay. The villa consists of a cozy living room, a modern kitchen and comfortable bedrooms. The VRV system will control the temperature regime, and underfloor heating is also provided. You can also relax on the large verandas and balconies. In the courtyard there is a garden and a large swimming pool 3 by 6 meters. The complex of 9 luxury villas is located in a picturesque landscape among the hills, famous for the almond and olive trees growing here. It is ideal for people who appreciate style, comfort and beauty, and also want to settle i...

Property Info

Covered Area **199**
 Furnishing **Furnished**
 Energy Efficiency **A**
 Air Conditioning **All rooms, Yes**

Plot / Area Info

Parking **Covered, Yes**

Additional info

Reference Number **165258**
 Property type **House**
 Condition **Brand New**
 Bathrooms **3**

Amenities

Location

Location: Episkopi Pafou Region: **Paphos**

Price: €495 000 + VAT

VAT for this property is **€41,814** or **€94,050**. VAT usually is 19%. If it is your first purchase of property, you can have VAT reduced to 5% for the first 150sq.m. of the property.

VAT	Excluded	Title transfer fee	None	Common expenses	None
		Price per SQM	€2 487.00/m²		

Representative: DOM Real Estate

Registration number	397	Email	info@dom.com.cy
License number	338/E	Legal name	N/A
Phone: +35796644888			

Price change history

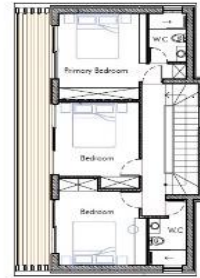
€495 000 on Jul 9, 2025



TYPE B | 3 Bedroom | Villa 1 & 9



Ground Floor

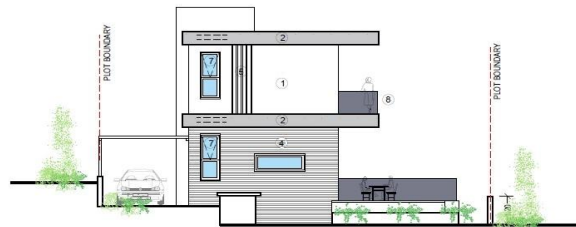


First Floor

TYPE B | 3 Bedroom | Villa 1 & 9



- MATERIALS**
- 1 White render
 - 2 Grey render
 - 3 Fair-face concrete
 - 4 Board formed concrete
 - 5 Louvers 2x120
 - 6 Aluminium cladding
 - 7 Aluminium windows
 - 8 Glass balustrade
 - 9 Green wall
 - 10 Deck
 - 11 Hpl
 - 12 Timber cladding



north-west elevation

- MATERIALS**
- 1 white render
 - 2 grey render
 - 3 fair-face concrete
 - 4 board formed concrete
 - 5 louvers 2x120
 - 6 aluminium cladding
 - 7 aluminium windows
 - 8 glass balustrade
 - 9 green wall
 - 10 deck
 - 11 hpl
 - 12 timber cladding



north-east elevation