

2 Bedroom Apartment for Sale

For sale a penthouse in a modern residential complex located in the Kato Polemidia area, which easily connects the center of Limassol with its eastern suburbs. The complex has only 6 apartments and three shops. The exterior is based on a minimalist architectural approach, and the combination of modern elements such as glass, wood and concrete creates a refined, modern aesthetic. The ergonomic layout and modern design create a harmonious combination of comfort and harmony throughout the project. Each apartment has a spacious open-plan kitchen and living room, illuminated by large windows that let in plenty of natural light. The master bedroom has its own bathroom. Whether you're looking...

Property Info

Covered Area	144
Furnishing	Unfurnished
Energy Efficiency	A
Air Conditioning	No

Plot / Area Info

Parking

Covered, Yes

Additional info

Reference Number	166027
Property type	Apartment
Condition	Brand New
Bathrooms	1

Amenities

Location

Price: €295 000 + VAT

VAT for this property is **€14,750** or **€56,050**. VAT usually is 19%. If it is your first purchase of property, you can have VAT reduced to 5% for the first 150sq.m. of the property.

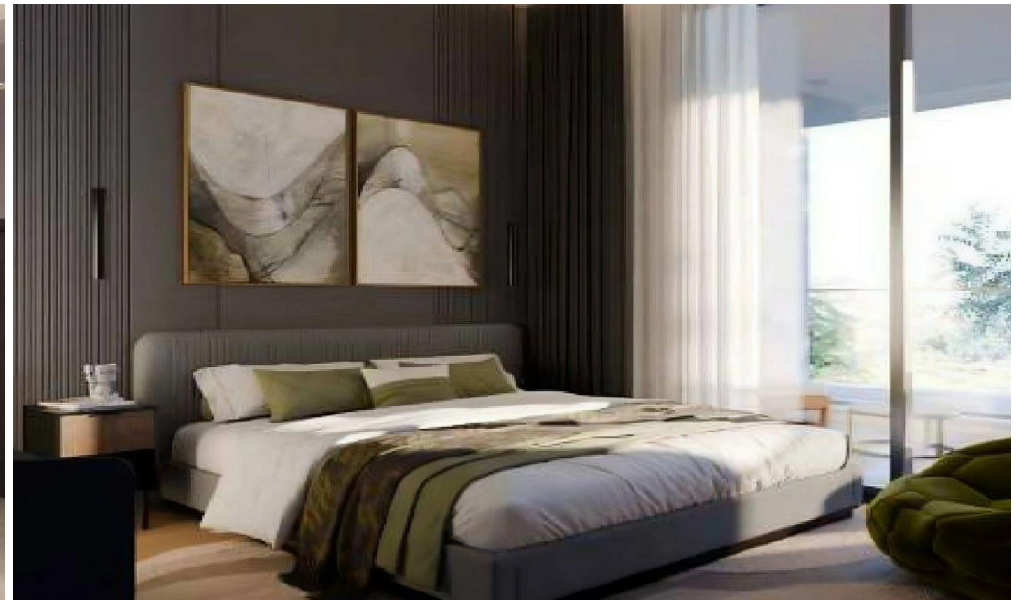
VAT	Excluded	Title transfer fee	None	Common expenses	None
		Price per SQM	€2 049.00/m²		

Representative: DOM Real Estate

Registration number	397	Email	info@dom.com.cy
License number	338/E	Legal name	N/A
Phone: +35796644888			

Price change history

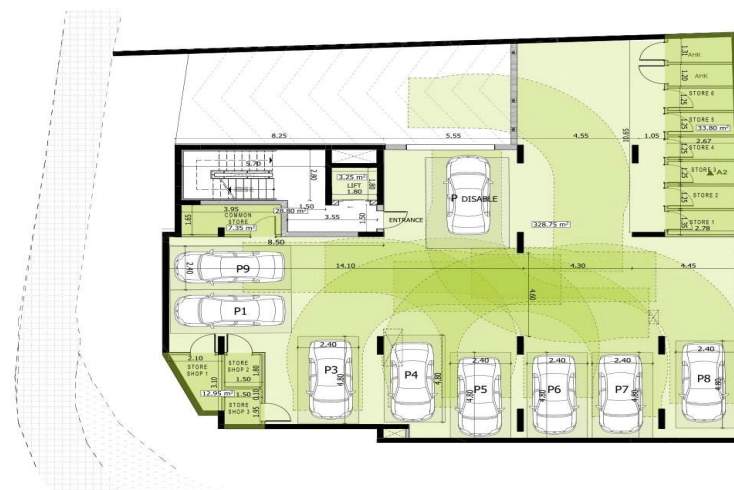
€295 000 on Jul 12, 2025



SOUTH EAST VIEW



BASEMENT



GROUND FLOOR

