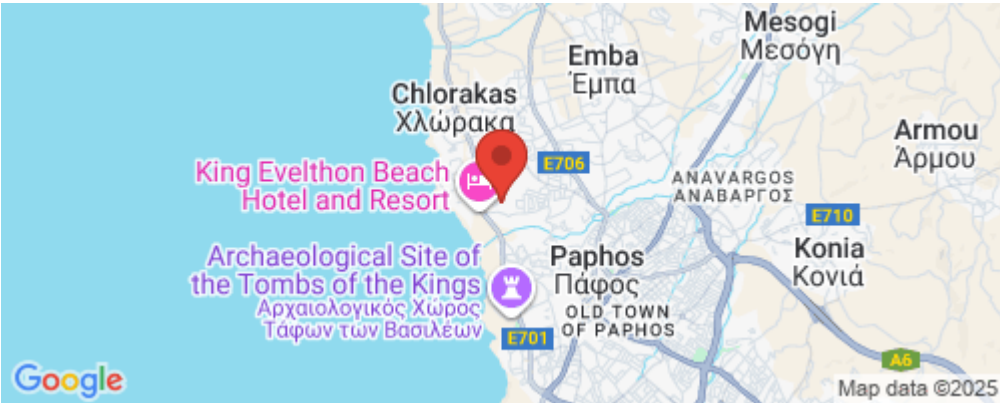


3 Bedroom House for Sale in Chlorakas, Paphos District

Set in the prestigious district of Chloraka, this elegant three-bedroom villa offers panoramic sea views and a seamless connection to the Mediterranean landscape. Just a short walk from the coastline, it provides the ideal blend of serenity and convenience—close to beaches, fine hotels, restaurants, shops, schools, and supermarkets.



Designed with minimalist architecture and perched on an elevated plot, the villa maximizes light, space, and privacy. Expansive windows frame stunning views, while premium materials like glass, aluminium, and concrete create a modern yet timeless aesthetic.

Inside, spacious open-plan interiors are finished to a high standard, featuring warm woo...

Property Info

Covered Area	193
Covered Veranda	40
Total Number of Floors	2
Furnishing	Furnished
Energy Efficiency	A
Heating	Underfloor Heating, Yes

Plot / Area Info

Plot area	280
Pool	Yes
Parking	Uncovered, Yes

Additional info

Reference Number	7932
Property type	House
Condition	Pre-Owned
Bathrooms	3
View	Sea view

Amenities

- Parking

Location

**Location:** Chlorakas  
**Coordinates:** 34.79103900999 / 32.405601702236

**Region:** Paphos

## Price: €950 000 + VAT

VAT for this property is **€77,132** or **€180,500**. VAT usually is 19%. If it is your first purchase of property, you can have VAT reduced to 5% for the first 150sq.m. of the property.

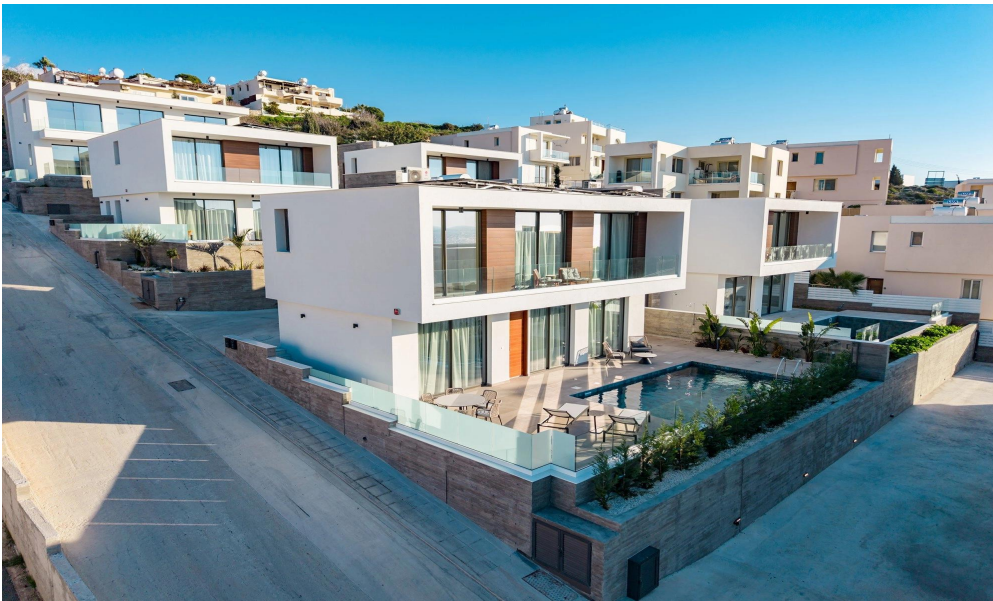
VAT	<b>Excluded</b>	Title transfer fee	<b>~€34 600.00</b>	Common expenses	<b>None</b>
		Price per SQM	<b>€4 922.00/m²</b>		

## Representative: RealDeal Estates

Registration number	<b>1311</b>	Email	<b>info@realdeal.cy</b>
License number	<b>347/E</b>	Legal name	<b>Esperia Estates (Limassol-Paphos) Limited</b>
Phone: <b>+35725255505, +35794001333</b>			

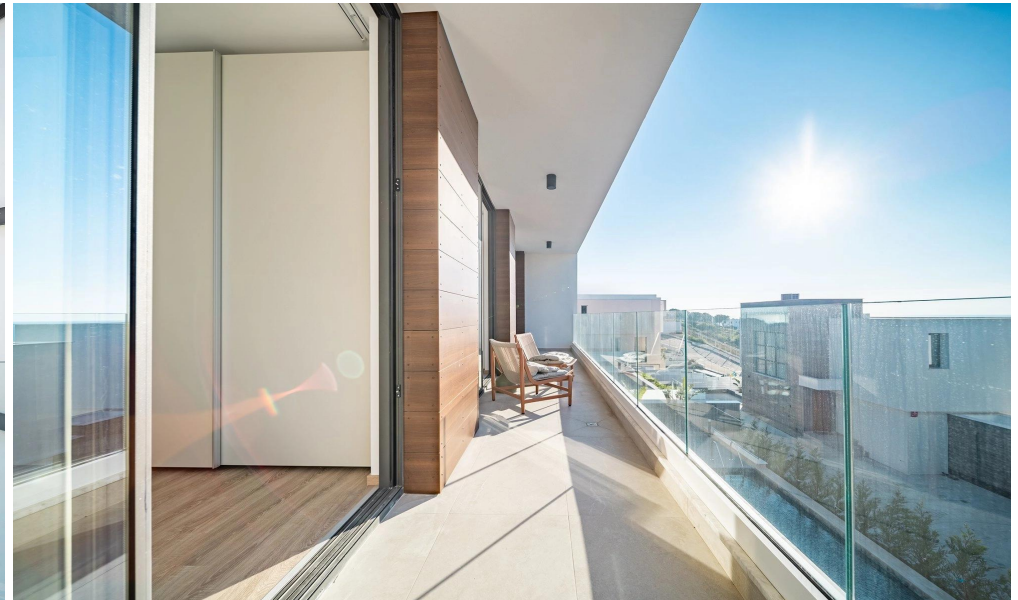
## Price change history

€950 000 on Jul 23, 2025





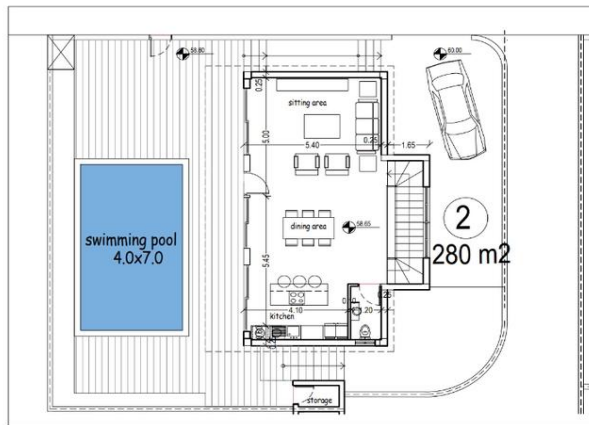




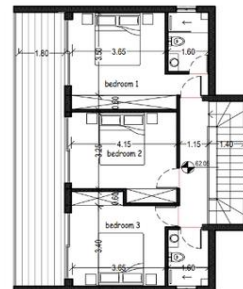
κατοικία 2

## VILLA 2

plot area 280m<sup>2</sup>  
Ecov=E1+E2=153.65m<sup>2</sup>  
covered ver.=40.0m<sup>2</sup>  
uncovered ver.=48.0m<sup>2</sup>  
store=3.5m<sup>2</sup>  
swimming pool=28.0m<sup>2</sup>



1st floor  
E1=74.65m<sup>2</sup>  
covered ver.=20.0m<sup>2</sup>  
uncovered ver.=48.00m<sup>2</sup>  
store=3.5m<sup>2</sup>  
swimming pool=28.0m<sup>2</sup>



2nd floor  
E2=79.0m<sup>2</sup>  
covered ver.=20.0m<sup>2</sup>