

3 Bedroom House for Sale in Chlorakas, Paphos District

Set in the prestigious district of Chloraka, this elegant three-bedroom villa offers panoramic sea views and a seamless connection to the Mediterranean landscape. Just a short walk from the coastline, it provides the ideal blend of serenity and convenience—close to beaches, fine hotels, restaurants, shops, schools, and supermarkets.



Designed with minimalist architecture and perched on an elevated plot, the villa maximizes light, space, and privacy. Expansive windows frame stunning views, while premium materials like glass, aluminium, and concrete create a modern yet timeless aesthetic.

Inside, spacious open-plan interiors are finished to a high standard, featuring warm woo...

Property Info

Covered Area	193
Covered Veranda	40
Total Number of Floors	2
Furnishing	Furnished
Energy Efficiency	A
Heating	Underfloor Heating, Yes

Plot / Area Info

Plot area	280
Pool	Yes
Parking	Uncovered, Yes

Additional info

Reference Number	7932
Property type	House
Condition	Pre-Owned
Bathrooms	3
View	Sea view

Amenities

- Parking

Location

Location: Chlorakas
Coordinates: **34.79103900999 / 32.405601702236**

Region: **Paphos**

Price: €780 000 + VAT

VAT for this property is **€63,330** or **€148,200**. VAT usually is 19%. If it is your first purchase of property, you can have VAT reduced to 5% for the first 150sq.m. of the property.

VAT	Excluded	Title transfer fee	~€27 800.00	Common expenses	None
		Price per SQM	€4 041.00/m²		

Representative: RealDeal Estates

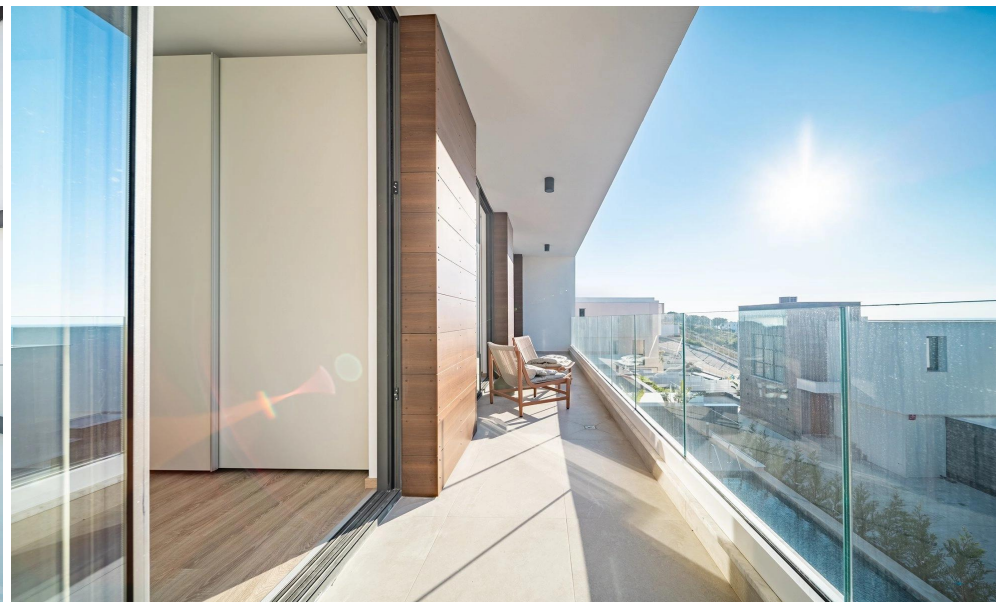
Registration number	1311	Email	info@realdeal.cy
License number	347/E	Legal name	Esperia Estates (Limassol-Paphos) Limited
Phone: +35725255505, +35794001333			

Price change history

€950 000 on Jul 23, 2025
 €870 000 on Sep 27, 2025
 €830 000 on Jan 28, 2026
 €780 000 on Apr 23, 2026



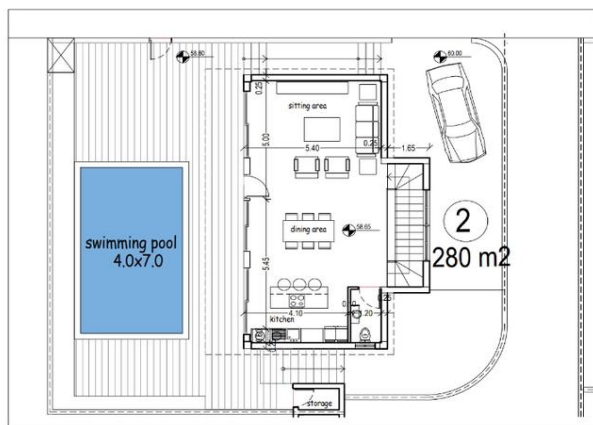




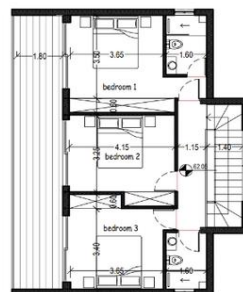
κατοικία 2

VILLA 2

plot area 380m²
 Ecov=E1+E2=153.65m²
 covered ver =48.0m²
 uncovered ver =48.0m²
 store=3.5m²
 swimming pool=28.0m²



1st floor
 E1=74.65m²
 covered ver =20.0m²
 uncovered ver =48.00m²
 store=3.5m²
 swimming pool=28.0m²



2nd floor
 E2=79.0m²
 covered ver =20.0m²