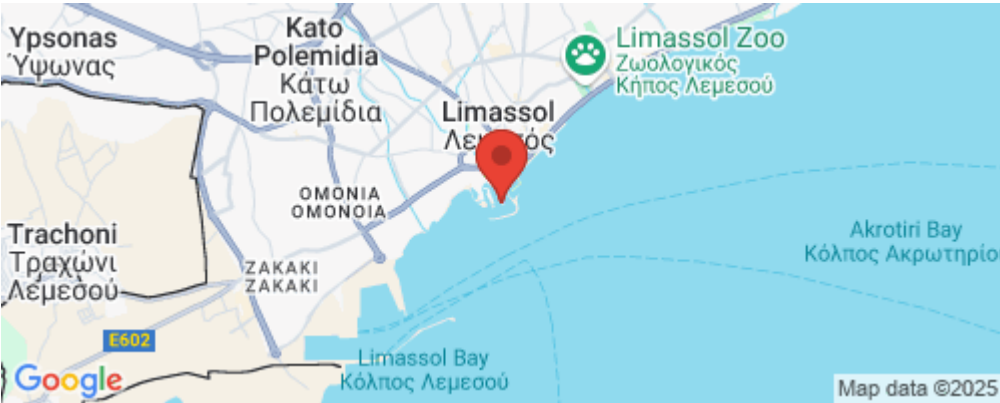


lep002n1f

One Bedroom Luxury Apartment For Sale in the Prestige Limassol Marina Area. -Title Deeds (New Build Process) An exclusive waterfront development combining elegant residences and dining area in the heart of Limassol. Enjoy living on the sea in an exclusive luxury apartment with views of the Mediterranean and the Marina. With the thrill of the city just moments away, you can relax in a beautiful setting just moments away from the beach. Elegance and style is guaranteed. - 1 bedroom ensuite - Open plan living - Private underground parking - Communal infinity pool - Communal indoor pool - Gym - Luxury spa...



Property Info

Plot / Area Info

Additional info

Covered Area	56	Pool	Yes	Reference Number	lep002n1f
				Property type	Apartment
				Condition	Brand New
				Bathrooms	1

Amenities

Location

Location: Limassol - Marina Region: Limassol
Coordinates: 34.6669 / 33.04078

Price: €735 000 + VAT

VAT for this property is **€36,750** or **€139,650**. VAT usually is 19%. If it is your first purchase of property, you can have VAT reduced to 5% for the first 150sq.m. of the property.

VAT	Excluded	Title transfer fee	None	Common expenses	None
		Price per SQM	€13 125.00/m²		

Representative: Emerald Property Consultants

Registration number	845	Email	info@cyprusemerald.com
License number	329/E	Legal name	N/A
Phone: +35723080080			

Price change history

€669 000 on Oct 20, 2023

€735 000 on Feb 29, 2024









Master Plan.

- 1 Poseidon Tower
- 2 Zeus Tower
- 3 Oceanus Tower
- 4 Office Tower
- 5 Main Entrance and Guard House
- 6 Outdoor Swimming Pool
- 7 Residents' Lounge
- 8 Spa and Indoor Swimming Pool
- 9 Public Car Park Entrance
- 10 Green Area
- 11 Children's Playground
- 12 Fountain Pond
- 13 Gymnasium
- 14 Observation Point
- 15 Restaurant
- 16 Bistro
- 17 Drop-off Point
- 18 Podium Level
- 19 Communal Area



Total Covered Area	104.90 m ²
Internal Area	57.50 m ²
Covered Veranda	18.00 m ²
Uncovered Veranda	10.00 m ²
Common Area	30.40 m ²
Allocated Parking	1

Zeus Tower



Preliminary Floor Plan



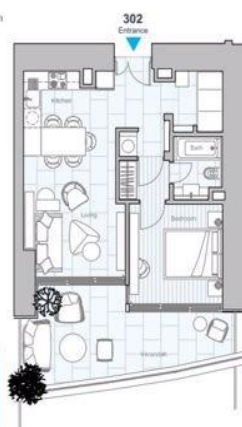
Preliminary Master Plan

Please note that the information, plans, photos, and artist impressions provided in this presentation are intended for guide purposes only. They do not constitute a representation or an offer to sell. Please be aware that the Developer reserves the right to make changes at any time, prior to the signing of the Agreement.

PRICE
€ 735,000
(PLUS VAT)

Apartment 302 / 1 Bedroom Zeus Tower - Signature Collection

Preliminary Apartment Plan



Mediterranean Sea

Total Covered Area	104.90 m ²
Internal Area	57.50 m ²
Covered Veranda	17.00 m ²
Common Area	30.40 m ²
Allocated Parking	1

Zeus Tower



Preliminary Floor Plan



Preliminary Master Plan

Please note that the information, plans, photos, and artist impressions provided in this presentation are intended for guide purposes only. They do not constitute a representation or an offer to sell. Please be aware that the Developer reserves the right to make changes at any time, prior to the signing of the Agreement.

PRICE
€ 748,000
(PLUS VAT)

Apartment 402 / 1 Bedroom Zeus Tower - Signature Collection

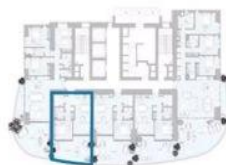
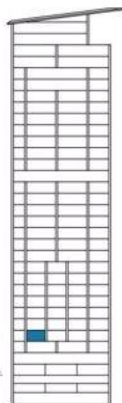
Preliminary Apartment Plan



Mediterranean Sea

Total Covered Area	106.90 m ²
Internal Area	57.50 m ²
Covered Veranda	19.00 m ²
Uncovered Veranda	8.00 m ²
Common Area	30.40 m ²
Allocated Parking	1

Zeus Tower



Preliminary Floor Plan



Preliminary Master Plan

Please note that the information, plans, photos, and artist impressions provided in this presentation are intended for guide purposes only. They do not constitute a representation or an offer to sell. Please be aware that the Developer reserves the right to make changes at any time, prior to the signing of the Agreement.

Apartment 304 / 1 Bedroom

Zeus Tower - Signature Collection

Preliminary Apartment Plan

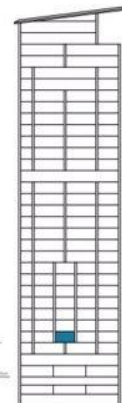


Mediterranean Sea

PRICE
€ 735,000
(PLUS VAT)

Total Covered Area	108.37 m ²
Internal Area	56.50 m ²
Covered Veranda	22.00 m ²
Uncovered Veranda	8.00 m ²
Common Area	29.87 m ²
Allocated Parking	1

Zeus Tower



Preliminary Floor Plan



Preliminary Master Plan

Please note that the information, plans, photos, and artist impressions provided in this presentation are intended for guide purposes only. They do not constitute a representation or an offer to sell. Please be aware that the Developer reserves the right to make changes at any time, prior to the signing of the Agreement.

Apartment 303 / 1 Bedroom

Zeus Tower - Signature Collection

Preliminary Apartment Plan

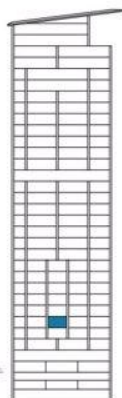


Mediterranean Sea

PRICE
€ 750,000
(PLUS VAT)

Total Covered Area	107.37 m ²
Internal Area	56.50 m ²
Covered Veranda	21.00 m ²
Common Area	29.87 m ²
Allocated Parking	1

Zeus Tower



Preliminary Floor Plan



Preliminary Master Plan

Please note that the information, plans, photos, and artist impressions provided in this presentation are intended for guide purposes only. They do not constitute a representation or an offer to sell. Please be aware that the Developer reserves the right to make changes at any time, prior to the signing of the Agreement.

Apartment 403 / 1 Bedroom

Zeus Tower - Signature Collection

Preliminary Apartment Plan

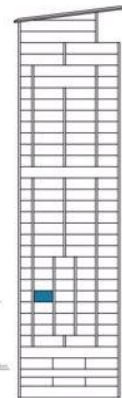


Mediterranean Sea

PRICE
€ 765,000
(PLUS VAT)

Total Covered Area	105.90 m ²
Internal Area	57.50 m ²
Covered Veranda	18.00 m ²
Common Area	30.40 m ²
Allocated Parking	1

Zeus Tower



Preliminary Floor Plan



Preliminary Master Plan

Please note that the information, plans, photos, and artist impressions provided in this presentation are intended for guide purposes only. They do not constitute a representation or an offer to sell. Please be aware that the Developer reserves the right to make changes at any time, prior to the signing of the Agreement.

Apartment 604 / 1 Bedroom

Zeus Tower - Signature Collection

Preliminary Apartment Plan

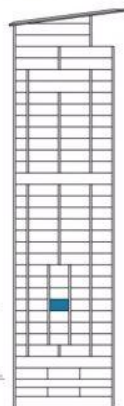


Mediterranean Sea

PRICE
€ 780,000
(PLUS VAT)

Total Covered Area	107.37 m ²
Internal Area	56.50 m ²
Covered Veranda	21.00 m ²
Common Area	29.87 m ²
Allocated Parking	1

Zeus Tower



Preliminary Floor Plan



Preliminary Master Plan

Please note that the information, plans, photos, and artist impressions provided in this presentation are intended for guide purposes only. They do not constitute a representation or an offer to treat. Please be aware that the Developer reserves the right to make changes at any time, prior to the signing of the Agreement.

Apartment 603 / 1 Bedroom

Zeus Tower - Signature Collection

Preliminary Apartment Plan

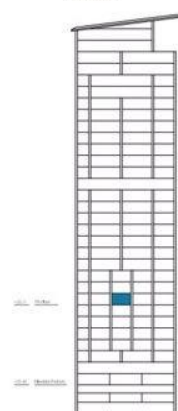


Mediterranean Sea

PRICE
€ 795,000
(PLUS VAT)

Total Covered Area	107.37 m ²
Internal Area	56.50 m ²
Covered Veranda	21.00 m ²
Common Area	29.87 m ²
Allocated Parking	1

Zeus Tower



Preliminary Floor Plan



Preliminary Master Plan

Please note that the information, plans, photos, and artist impressions provided in this presentation are intended for guide purposes only. They do not constitute a representation or an offer to treat. Please be aware that the Developer reserves the right to make changes at any time, prior to the signing of the Agreement.

Apartment 703 / 1 Bedroom

Zeus Tower - Signature Collection

Preliminary Apartment Plan

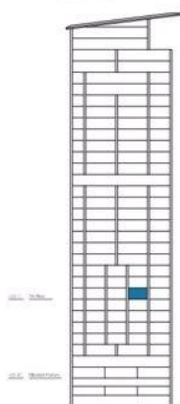


Mediterranean Sea

PRICE
€ 810,000
(PLUS VAT)

Total Covered Area	104.90 m ²
Internal Area	57.50 m ²
Covered Veranda	17.00 m ²
Common Area	30.40 m ²
Allocated Parking	1

Zeus Tower



Preliminary Floor Plan



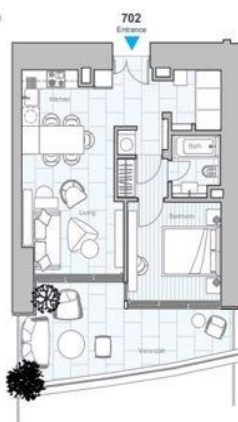
Preliminary Master Plan

Please note that the information, plans, photos, and artist impressions provided in this presentation are intended for guide purposes only. They do not constitute a representation or an offer to treat. Please be aware that the Developer reserves the right to make changes at any time, prior to the signing of the Agreement.

Apartment 702 / 1 Bedroom

Zeus Tower - Signature Collection

Preliminary Apartment Plan

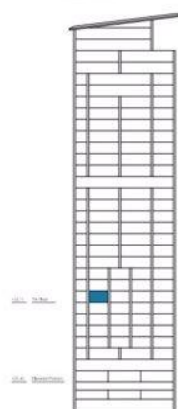


Mediterranean Sea

PRICE
€ 795,000
(PLUS VAT)

Total Covered Area	105.90 m ²
Internal Area	57.50 m ²
Covered Veranda	18.00 m ²
Common Area	30.40 m ²
Allocated Parking	1

Zeus Tower



Preliminary Floor Plan



Preliminary Master Plan

Please note that the information, plans, photos, and artist impressions provided in this presentation are intended for guide purposes only. They do not constitute a representation or an offer to treat. Please be aware that the Developer reserves the right to make changes at any time, prior to the signing of the Agreement.

Apartment 704 / 1 Bedroom

Zeus Tower - Signature Collection

Preliminary Apartment Plan



Mediterranean Sea

PRICE
€ 795,000
(PLUS VAT)