

3 Bedroom Apartment for Sale in Limassol - Marina

Three Bedroom Luxury Apartment For Sale in the Prestige Limassol Marina Area. -Title Deeds (New Build Process) An exclusive waterfront development combining elegant residences and dining area in the heart of Limassol. Enjoy living on the sea in an exclusive luxury apartment with views of the Mediterranean and the Marina. With the thrill of the city just moments away, you can relax in a beautiful setting just moments away from the beach. Elegance and style is guaranteed. - 3 bedrooms - Master ensuite - Open plan living - Family bathroom - Guest wc - Private underground parking - Communal infinity pool&...



Property Info

Covered Area

118

Plot / Area Info

Pool

Yes

Additional info

Reference Number

lep002n3f

Property type

Apartment

Condition

Brand New

Bathrooms

3

Amenities

Location

Location: Limassol - Marina

Region: **Limassol**

Coordinates: **34.6669 / 33.04078**

Price: €1 196 000 + VAT

VAT for this property is **€59,800** or **€227,240**. VAT usually is 19%. If it is your first purchase of property, you can have VAT reduced to 5% for the first 150sq.m. of the property.

VAT	Excluded	Title transfer fee	None	Common expenses	None
		Price per SQM	€10 136.00/m²		

Representative: Emerald Property Consultants

Registration number	845	Email	info@cyprusemerald.com
License number	329/E	Legal name	N/A
Phone: +35723080080			

Price change history

€1 336 000 on Oct 20, 2023
 €1 258 000 on Feb 19, 2024
 €1 196 000 on Feb 29, 2024







Total Covered Area	234.39 m ²
Internal Area	188.00 m ²
Covered Veranda	34.00 m ²
Uncovered Veranda	6.00 m ²
Common Area	62.39 m ²
Allocated Parking	1



Preliminary Floor Plan



Preliminary Master Plan

Apartment 305/ 3 Bedrooms Zeus Tower - Signature Collection

Preliminary Apartment Plan



Mediterranean Sea

PRICE
€ 1,308,000
(PLUS VAT)

Please note that the information, plans, photos, and artist impressions provided in this presentation are intended for guide purposes only. They do not constitute a representation or an offer to sell. Please be aware that the Developer reserves the right to make changes at any time, prior to the signing of the agreement.

Total Covered Area	261.61 m ²
Internal Area	143.00 m ²
Covered Veranda	43.00 m ²
Uncovered Veranda	11.00 m ²
Common Area	73.61 m ²
Allocated Parking	1



Preliminary Floor Plan



Preliminary Master Plan

Apartment 301 / 3 Bedrooms Zeus Tower - Signature Collection

Preliminary Apartment Plan



Mediterranean Sea

PRICE
€ 1,616,000
(PLUS VAT)

Please note that the information, plans, photos, and artist impressions provided in this presentation are intended for guide purposes only. They do not constitute a representation or an offer to sell. Please be aware that the Developer reserves the right to make changes at any time, prior to the signing of the agreement.



Master Plan.

- 1 Poseidon Tower
- 2 Zeus Tower
- 3 Oceanus Tower
- 4 Office Tower
- 5 Main Entrance and Guard House
- 6 Outdoor Swimming Pool
- 7 Residents' Lounge
- 8 Spa and Indoor Swimming Pool
- 9 Public Car Park Entrance
- 10 Green Area
- 11 Children's Playground
- 12 Fountain Pond
- 13 Gymnasium
- 14 Observation Point
- 15 Restaurant
- 16 Bistro
- 17 Drop-off Point
- 18 Podium Level
- 19 Communal Area



Total Covered Area	219.20 m ²
Internal Area	118.00 m ²
Covered Veranda	33.00 m ²
Common Area	68.20 m ²
Allocated Parking	1

Poseidon Tower

Preliminary Floor Plan

Preliminary Master Plan

Apartment 505 / 3 Bedrooms

Poseidon Tower

Preliminary Apartment Plan

PRICE
€ 1,308,000
(PLUS VAT)

Mediterranean Sea

Total Covered Area	260.61 m ²
Internal Area	143.00 m ²
Covered Veranda	42.00 m ²
Common Area	75.61 m ²
Allocated Parking	1

Zeus Tower

Preliminary Floor Plan

Preliminary Master Plan

Apartment 401 / 3 Bedrooms

Zeus Tower - Signature Collection

Preliminary Apartment Plan

PRICE
€ 1,651,000
(PLUS VAT)

Mediterranean Sea

Please note that the information, plans, photos, and artist impressions provided in this presentation are intended for guide purposes only. They do not constitute a representation or an offer to sell. Please be aware that the Developer reserves the right to make changes at any time, prior to the signing of the Agreement.

Total Covered Area	219.20 m ²
Internal Area	118.00 m ²
Covered Veranda	33.00 m ²
Common Area	68.20 m ²
Allocated Parking	1

Poseidon Tower

Preliminary Floor Plan

Preliminary Master Plan

Apartment 405 / 3 Bedrooms

Poseidon Tower

Preliminary Apartment Plan

PRICE
€ 1,196,000
(PLUS VAT)

Mediterranean Sea

Total Covered Area	260.61 m ²
Internal Area	143.00 m ²
Covered Veranda	42.00 m ²
Common Area	75.61 m ²
Allocated Parking	1

Zeus Tower

Preliminary Floor Plan

Preliminary Master Plan

Apartment 601 / 3 Bedrooms

Zeus Tower - Signature Collection

Preliminary Apartment Plan

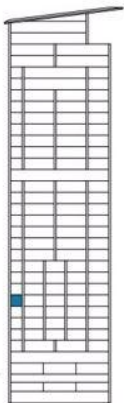
PRICE
€ 1,721,000
(PLUS VAT)

Mediterranean Sea

Please note that the information, plans, photos, and artist impressions provided in this presentation are intended for guide purposes only. They do not constitute a representation or an offer to sell. Please be aware that the Developer reserves the right to make changes at any time, prior to the signing of the Agreement.

Total Covered Area	213.39 m ²
Internal Area	118.00 m ²
Covered Veranda	33.00 m ²
Common Area	62.39 m ²
Allocated Parking	1

Zeus Tower



Preliminary Floor Plan



Preliminary Master Plan

Please note that the information, plans, photos, and artist impressions provided in this presentation are intended for guide purposes only. They do not constitute a representation or an offer to trade. Please be aware that the Developer reserves the right to make changes at any time, prior to the signing of the Agreement.

Apartment 605/ 3 Bedrooms

Zeus Tower - Signature Collection

Preliminary Apartment Plan

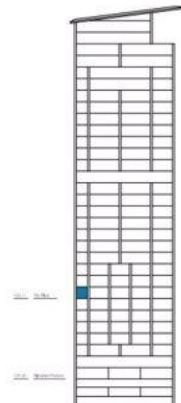


Mediterranean Sea

PRICE
€ 1,396,000
(PLUS VAT)

Total Covered Area	213.39 m ²
Internal Area	118.00 m ²
Covered Veranda	33.00 m ²
Common Area	62.39 m ²
Allocated Parking	1

Zeus Tower



Preliminary Floor Plan



Preliminary Master Plan

Please note that the information, plans, photos, and artist impressions provided in this presentation are intended for guide purposes only. They do not constitute a representation or an offer to trade. Please be aware that the Developer reserves the right to make changes at any time, prior to the signing of the Agreement.

Apartment 705/ 3 Bedrooms

Zeus Tower - Signature Collection

Preliminary Apartment Plan

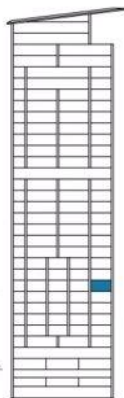


Mediterranean Sea

PRICE
€ 1,420,000
(PLUS VAT)

Total Covered Area	260.61 m ²
Internal Area	143.00 m ²
Covered Veranda	42.00 m ²
Common Area	75.61 m ²
Allocated Parking	1

Zeus Tower



Preliminary Floor Plan



Preliminary Master Plan

Please note that the information, plans, photos, and artist impressions provided in this presentation are intended for guide purposes only. They do not constitute a representation or an offer to trade. Please be aware that the Developer reserves the right to make changes at any time, prior to the signing of the Agreement.

Apartment 701/ 3 Bedrooms

Zeus Tower - Signature Collection

Preliminary Apartment Plan

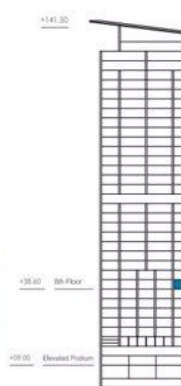


Mediterranean Sea

PRICE
€ 1,759,000
(PLUS VAT)

Total Covered Area	219.20 m ²
Internal Area	118.00 m ²
Covered Veranda	33.00 m ²
Common Area	68.20 m ²
Allocated Parking	1

Poseidon Tower



Preliminary Floor Plan

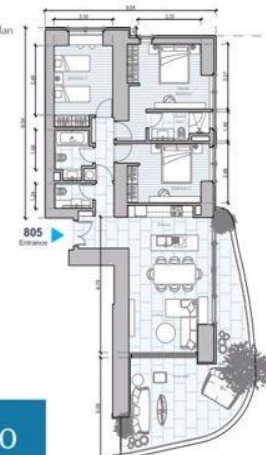


Preliminary Master Plan

Apartment 805 / 3 Bedrooms

Poseidon Tower

Preliminary Apartment Plan

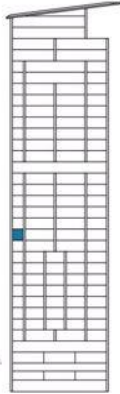


Mediterranean Sea

PRICE
€ 1,416,000
(PLUS VAT)

Total Covered Area	26.07 m ²
Internal Area	120.00 m ²
Covered Veranda	33.00 m ²
Common Area	63.07 m ²
Allocated Parking	1

Zeus Tower



Preliminary Floor Plan



Preliminary Master Plan

Please note that the information, plans, photos, and artist impressions provided in this presentation are intended for guide purposes only. They do not constitute a representation or an offer to trade. Please be aware that the Developer reserves the right to make changes at any time, prior to the signing of the Agreement.

Apartment 1104 / 3 Bedrooms Zeus Tower - Signature Collection

Preliminary Apartment Plan

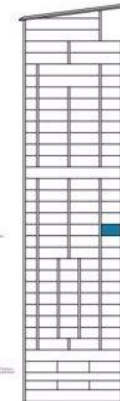


Mediterranean Sea

PRICE
€ 1,600,000
(PLUS VAT)

Total Covered Area	26.07 m ²
Internal Area	143.00 m ²
Covered Veranda	42.00 m ²
Common Area	75.16 m ²
Allocated Parking	1

Zeus Tower



Preliminary Floor Plan



Preliminary Master Plan

Please note that the information, plans, photos, and artist impressions provided in this presentation are intended for guide purposes only. They do not constitute a representation or an offer to trade. Please be aware that the Developer reserves the right to make changes at any time, prior to the signing of the Agreement.

Apartment 1201 / 3 Bedrooms Zeus Tower - Signature Collection

Preliminary Apartment Plan

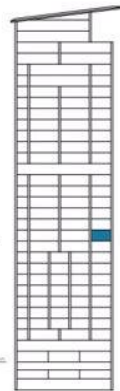


Mediterranean Sea

PRICE
€ 2,010,000
(PLUS VAT)

Total Covered Area	26.07 m ²
Internal Area	143.00 m ²
Covered Veranda	42.00 m ²
Common Area	75.16 m ²
Allocated Parking	1

Zeus Tower



Preliminary Floor Plan



Preliminary Master Plan

Please note that the information, plans, photos, and artist impressions provided in this presentation are intended for guide purposes only. They do not constitute a representation or an offer to trade. Please be aware that the Developer reserves the right to make changes at any time, prior to the signing of the Agreement.

Apartment 1101 / 3 Bedrooms Zeus Tower - Signature Collection

Preliminary Apartment Plan

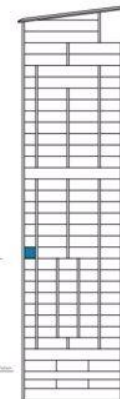


Mediterranean Sea

PRICE
€ 1,966,000
(PLUS VAT)

Total Covered Area	26.07 m ²
Internal Area	120.00 m ²
Covered Veranda	33.00 m ²
Common Area	63.07 m ²
Allocated Parking	1

Zeus Tower



Preliminary Floor Plan



Preliminary Master Plan

Please note that the information, plans, photos, and artist impressions provided in this presentation are intended for guide purposes only. They do not constitute a representation or an offer to trade. Please be aware that the Developer reserves the right to make changes at any time, prior to the signing of the Agreement.

Apartment 1004 / 3 Bedrooms Zeus Tower - Signature Collection

Preliminary Apartment Plan



Mediterranean Sea

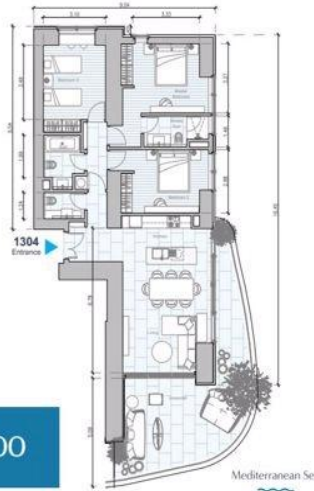
PRICE
€ 1,562,000
(PLUS VAT)

Total Covered Area	222.40 m ²
Internal Area	120.00 m ²
Covered Veranda	33.00 m ²
Common Area	69.40 m ²
Allocated Parking	1

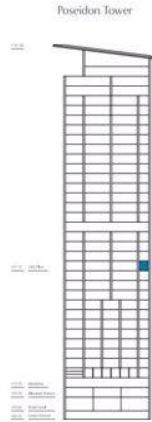


Apartment 1304 / 3 Bedrooms Poseidon Tower

Preliminary Apartment Plan



PRICE
€ 1,411,000
(PLUS VAT)



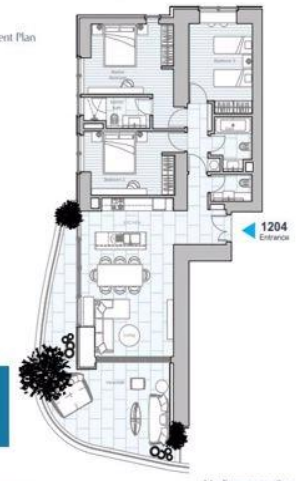
Preliminary Master Plan

Total Covered Area	216.07 m ²
Internal Area	120.00 m ²
Covered Veranda	33.00 m ²
Common Area	63.07 m ²
Allocated Parking	1

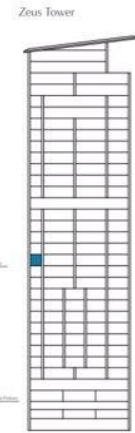


Apartment 1204 / 3 Bedrooms Zeus Tower - Signature Collection

Preliminary Apartment Plan



PRICE
€ 1,632,000
(PLUS VAT)



Preliminary Master Plan

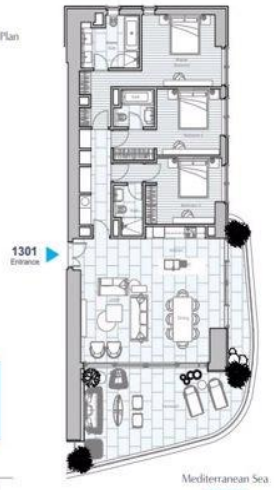
Please note that the information, plans, photos, and artistic impressions provided in this presentation are intended for guide purposes only. They do not constitute a representation or an offer to sell. Please be aware that the Developer reserves the right to make changes at any time, prior to the signing of the Agreement.

Total Covered Area	260.16 m ²
Internal Area	143.00 m ²
Covered Veranda	42.00 m ²
Common Area	75.16 m ²
Allocated Parking	1

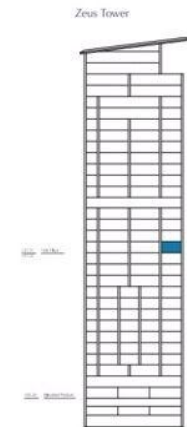


Apartment 1301 / 3 Bedrooms Zeus Tower - Signature Collection

Preliminary Apartment Plan



PRICE
€ 2,048,000
(PLUS VAT)



Preliminary Master Plan

Please note that the information, plans, photos, and artistic impressions provided in this presentation are intended for guide purposes only. They do not constitute a representation or an offer to sell. Please be aware that the Developer reserves the right to make changes at any time, prior to the signing of the Agreement.

Total Covered Area	216.07 m ²
Internal Area	120.00 m ²
Covered Veranda	33.00 m ²
Common Area	63.07 m ²
Allocated Parking	1



Apartment 1304 / 3 Bedrooms Zeus Tower - Signature Collection

Preliminary Apartment Plan



PRICE
€ 1,663,000
(PLUS VAT)



Preliminary Master Plan

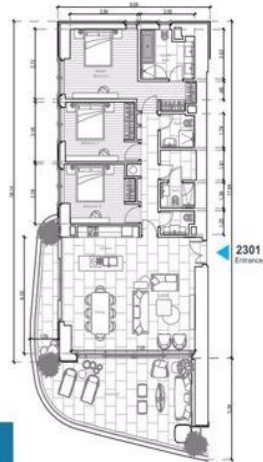
Please note that the information, plans, photos, and artistic impressions provided in this presentation are intended for guide purposes only. They do not constitute a representation or an offer to sell. Please be aware that the Developer reserves the right to make changes at any time, prior to the signing of the Agreement.

Total Covered Area	267.70 m ²
Internal Area	143.00 m ²
Covered Veranda	42.00 m ²
Common Area	82.70 m ²
Allocated Parking	1



Apartment 2301 / 3 Bedrooms Poseidon Tower

Preliminary Apartment Plan



Total Covered Area	222.40 m ²
Internal Area	120.00 m ²
Covered Veranda	33.00 m ²
Common Area	69.40 m ²
Allocated Parking	1

Poseidon Tower



Apartment 1404 / 3 Bedrooms Poseidon Tower

Preliminary Apartment Plan



Preliminary Master Plan

PRICE
€ 1,419,000
(PLUS VAT)

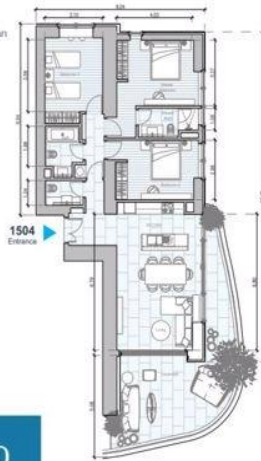
Mediterranean Sea

Total Covered Area	222.40 m ²
Internal Area	120.00 m ²
Covered Veranda	33.00 m ²
Common Area	69.40 m ²
Allocated Parking	1



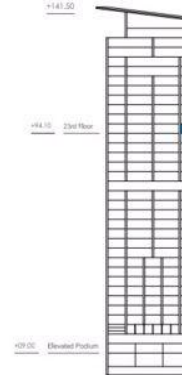
Apartment 1504 / 3 Bedrooms Poseidon Tower

Preliminary Apartment Plan



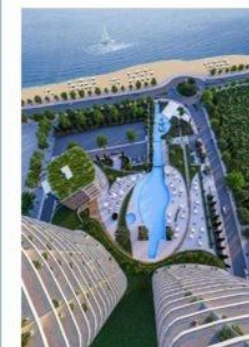
Total Covered Area	222.40 m ²
Internal Area	120.00 m ²
Covered Veranda	33.00 m ²
Common Area	69.40 m ²
Allocated Parking	1

Poseidon Tower



Apartment 2304 / 3 Bedrooms Poseidon Tower

Preliminary Apartment Plan

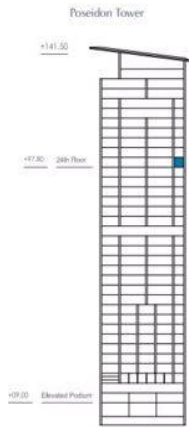


Preliminary Master Plan

PRICE
€ 1,528,000
(PLUS VAT)

Mediterranean Sea

Total Covered Area	222.40 m ²
Internal Area	120.00 m ²
Covered Veranda	33.00 m ²
Common Area	69.40 m ²
Allocated Parking	1



Preliminary Master Plan

Apartment 2404 / 3 Bedrooms Poseidon Tower

Preliminary Apartment Plan



Mediterranean Sea

PRICE
€ 1,561,000
(PLUS VAT)

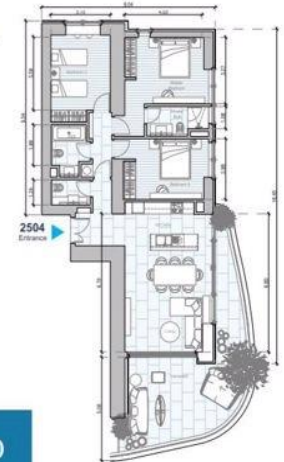
Total Covered Area	222.40 m ²
Internal Area	120.00 m ²
Covered Veranda	33.00 m ²
Common Area	69.40 m ²
Allocated Parking	1



Preliminary Master Plan

Apartment 2504 / 3 Bedrooms Poseidon Tower

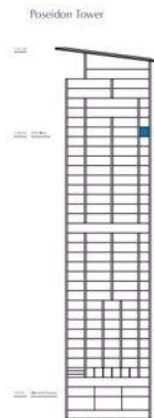
Preliminary Apartment Plan



Mediterranean Sea

PRICE
€ 1,647,000
(PLUS VAT)

Total Covered Area	222.40 m ²
Internal Area	120.00 m ²
Covered Veranda	33.00 m ²
Common Area	69.40 m ²
Allocated Parking	1



Preliminary Master Plan

Apartment 2704 / 3 Bedrooms Poseidon Tower

Preliminary Apartment Plan



Mediterranean Sea

PRICE
€ 1,729,000
(PLUS VAT)

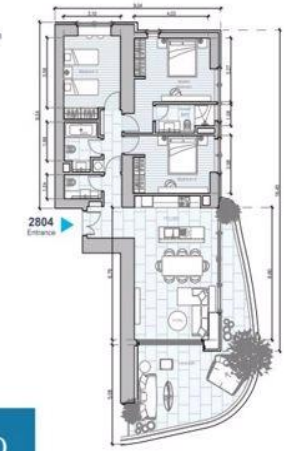
Total Covered Area	222.40 m ²
Internal Area	120.00 m ²
Covered Veranda	33.00 m ²
Common Area	69.40 m ²
Allocated Parking	1



Preliminary Master Plan

Apartment 2804 / 3 Bedrooms Poseidon Tower

Preliminary Apartment Plan



Mediterranean Sea

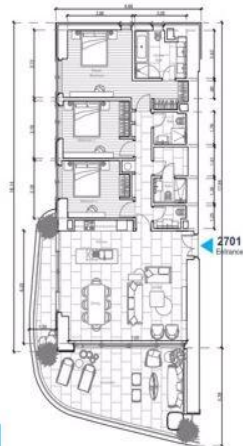
PRICE
€ 1,773,000
(PLUS VAT)

Total Covered Area	267.70 m ²
Internal Area	143.00 m ²
Covered Veranda	42.00 m ²
Common Area	82.70 m ²
Allocated Parking	1



Apartment 2701 / 3 Bedrooms Poseidon Tower

Preliminary Apartment Plan



Mediterranean Sea

PRICE
€ 2,133,000
(PLUS VAT)

Total Covered Area	324.70 m ²
Internal Area	168.50 m ²
Covered Veranda	60.00 m ²
Common Area	96.20 m ²
Allocated Parking	2



Apartment 3002 / 3 Bedrooms Poseidon Tower

Preliminary Apartment Plan



Mediterranean Sea

PRICE
€ 3,198,000
(PLUS VAT)

Total Covered Area	392.80 m ²
Internal Area	209.00 m ²
Covered Veranda	63.00 m ²
Common Area	120.80 m ²
Allocated Parking	2



Apartment 3102 / 3 Bedrooms Poseidon Tower

Preliminary Apartment Plan



Mediterranean Sea

PRICE
€ 3,573,000
(PLUS VAT)

Total Covered Area	324.70 m ²
Internal Area	168.50 m ²
Covered Veranda	60.00 m ²
Common Area	96.20 m ²
Allocated Parking	2



Apartment 2902 / 3 Bedrooms Poseidon Tower

Preliminary Apartment Plan



Mediterranean Sea

PRICE
€ 3,095,000
(PLUS VAT)