

## 2 Bedroom House for Sale in Konia, Paphos District

Modern, Two Bedroom Semi-Detached House for sale in Konia area, Paphos. Situated on the outskirts of Paphos, the area is surrounded by traditional villages with their excellent selection of local taverns. Additionally, conveniently located just moments away from Paphos leading international schools. It's rural location ensures tranquillity and seclusion, yet it's just a few minutes' drive from the cosmopolitan city of Paphos, with its wealth of amenities. It addition providing easy access to the motorway (2km), easy access to Paphos International Airport and the other major towns on the island.

Double storey house for sale in Konia area, Paphos. The ground floor consists of...

### Property Info

Covered Area  
Heating  
Air Conditioning

**103**  
**Central Heating, Yes**  
**All rooms, Yes**

### Plot / Area Info

Plot area  
Parking

**169**  
**Uncovered, Yes**

### Additional info

Reference Number **52848**  
Property type **House**  
Condition **Brand New**  
Bathrooms **1**

### Amenities

- Guest WC

### Location

**Location:** Konia  
Coordinates: **34.783963253472 / 32.451738295058**

Region: **Paphos**

## Price: €350 000 + VAT

VAT for this property is **€17,500** or **€66,500**. VAT usually is 19%. If it is your first purchase of property, you can have VAT reduced to 5% for the first 150sq.m. of the property.

VAT	<b>Excluded</b>	Title transfer fee	<b>None</b>	Common expenses	<b>None</b>
		Price per SQM	<b>€3 398.00/m<sup>2</sup></b>		

## Representative: Kalogirou Real Estate

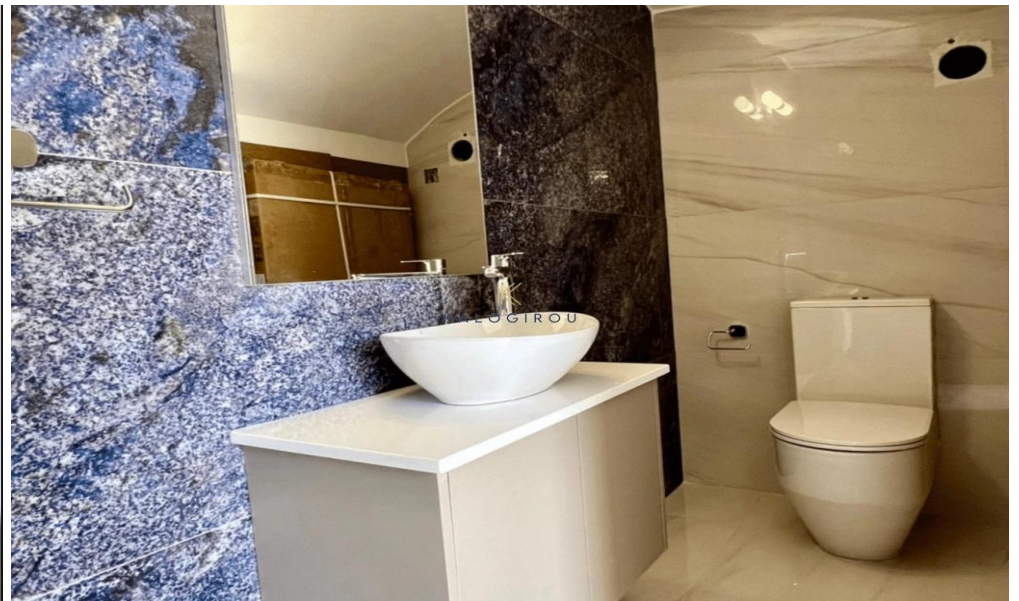
Registration number	<b>1104</b>	Email	<b>info@kalogirourealstate.com</b>
License number	<b>569/E</b>	Legal name	<b>N/A</b>
Phone: <b>+35724003723</b>			

## Price change history

€350 000 on Aug 27, 2025





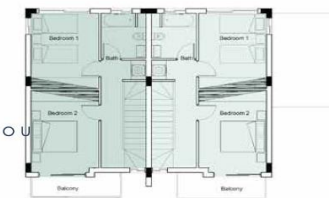








ΚΑΤΩΗ ΙΣΟΓΕΙΟΥ  
Ground Floor



ΚΑΤΩΗ ΟΡΟΦΟΥ  
Upper Floor

HOUSE No.	BEDROOMS	PLOT SIZE m <sup>2</sup>	INTERNAL COVERED AREA m <sup>2</sup>	COVERED VERANDA AREA m <sup>2</sup>	COVERED PARKING AREA m <sup>2</sup>	UN - COVERED VERANDA AREA m <sup>2</sup>	TOTAL AREA m <sup>2</sup>
3A	2	168	103	4	-	-	107
3B	2	169	103	4	16	-	123