


## 2 Bedroom Apartment for Sale in Limassol - Petrou kai Pavlou

Two-bedroom apartment with an internal area of 77.36 m<sup>2</sup> is located on the first floor of a three-story building 

The apartment building is under construction in the Apostle Peter and Paul Parish in Limassol. It is in a quiet and very good area next to all services.

All apartments have 2 bathrooms, en suite in the master bedroom, covered parking, storage space and air conditioning provisions. All windows are made of high quality aluminum and double glass. The doors are imported and the entrance is security and fireproof.

### Property Info

|                        |                       |
|------------------------|-----------------------|
| Covered Area           | <b>98</b>             |
| Covered Veranda        | <b>21</b>             |
| Floor Number           | <b>1</b>              |
| Total Number of Floors | <b>3</b>              |
| Energy Efficiency      | <b>A</b>              |
| Air Conditioning       | <b>All rooms, Yes</b> |

### Plot / Area Info

Parking **Covered, Yes**

### Additional info

|                  |                           |
|------------------|---------------------------|
| Reference Number | <b>8697</b>               |
| Property type    | <b>Apartment</b>          |
| Condition        | <b>Under Construction</b> |
| Bathrooms        | <b>2</b>                  |

### Amenities

- Parking

### Location

**Location:** Limassol - Petrou kai Pavlou      Region: **Limassol**  
 Coordinates: **34.686104640449 / 33.027670405618**

## Price: €340 000 + VAT

VAT for this property is **€17,000** or **€64,600**. VAT usually is 19%. If it is your first purchase of property, you can have VAT reduced to 5% for the first 150sq.m. of the property.

|     |                 |                    |                                |                 |             |
|-----|-----------------|--------------------|--------------------------------|-----------------|-------------|
| VAT | <b>Excluded</b> | Title transfer fee | <b>None</b>                    | Common expenses | <b>None</b> |
|     |                 | Price per SQM      | <b>€3 469.00/m<sup>2</sup></b> |                 |             |

## Representative: RealDeal Estates

|  |              |            |  |
|--|--------------|------------|--|
| Registration number                      | <b>1311</b>  | Email      | <b>info@realdeal.cy</b>                          |
| License number                           | <b>347/E</b> | Legal name | <b>Esperia Estates (Limassol-Paphos) Limited</b> |
| Phone: <b>+35725255505, +35794001333</b> |              |            |  |

## Price change history

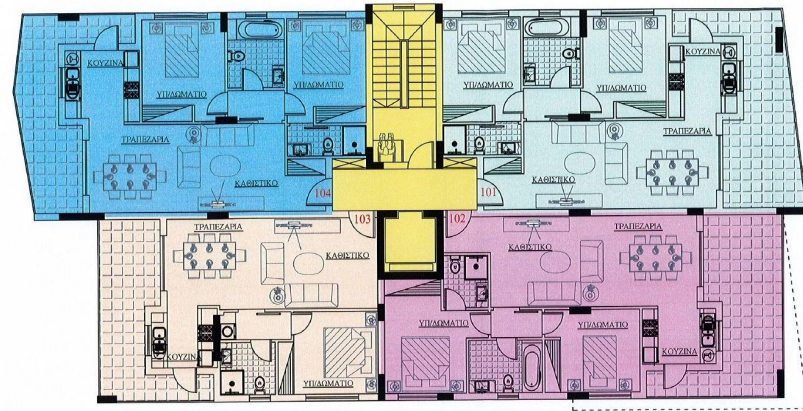
€330 000 on Aug 29, 2025

€340 000 on Jan 21, 2026

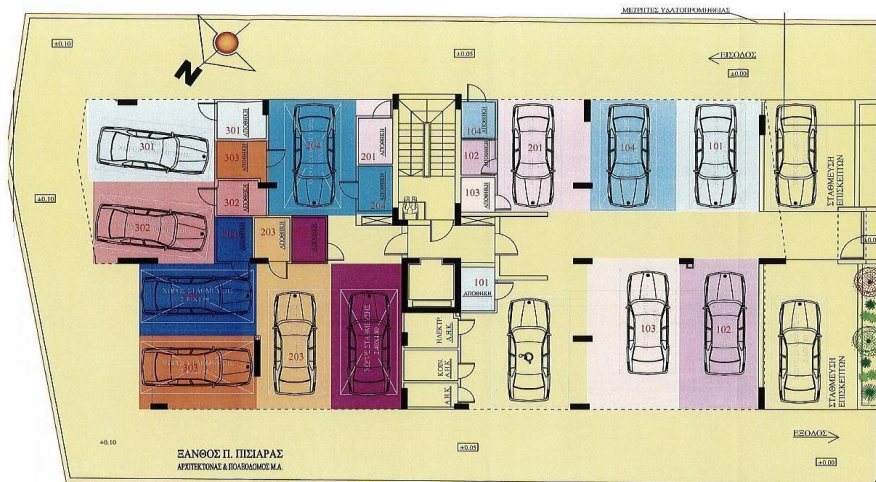








ΚΑΤΟΨΗ 1ου ΟΡΟΦΟΥ



ΧΩΡΟΤΑΞΙΚΟ