

2 Bedroom Apartment for Sale in Limassol - Petrou kai Pavlou

Two-bedroom apartment with an internal area of 77.36 m² is located on the third floor of a three-story building



The apartment building is under construction in the Apostle Peter and Paul Parish in Limassol. It is in a quiet and very good area next to all services.

All apartments have 2 bathrooms, en suite in the master bedroom, covered parking, storage space and air conditioning provisions. All windows are made of high quality aluminum and double glass. The doors are imported and the entrance is security and fireproof.

Property Info

Covered Area	98
Covered Veranda	21
Floor Number	3
Total Number of Floors	3
Energy Efficiency	A
Air Conditioning	All rooms, Yes

Plot / Area Info

Parking **Covered, Yes**

Additional info

Reference Number	8703
Property type	Apartment
Condition	Under Construction
Bathrooms	2

Amenities

- Parking

Location

Location: Limassol - Petrou kai Pavlou Region: **Limassol**
 Coordinates: **34.686104640449 / 33.027670405618**

Price: €350 000 + VAT

VAT for this property is **€17,500** or **€66,500**. VAT usually is 19%. If it is your first purchase of property, you can have VAT reduced to 5% for the first 150sq.m. of the property.

VAT	Excluded	Title transfer fee	None	Common expenses	None
		Price per SQM	€3 571.00/m²		

Representative: RealDeal Estates

Registration number	1311	Email	info@realdeal.cy
License number	347/E	Legal name	Esperia Estates (Limassol-Paphos) Limited
Phone: +35725255505, +35794001333			

Price change history

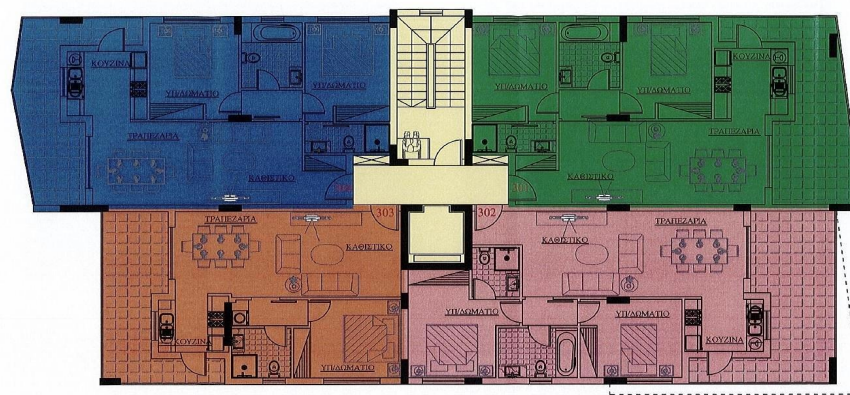
€340 000 on Aug 29, 2025

€350 000 on Jan 21, 2026

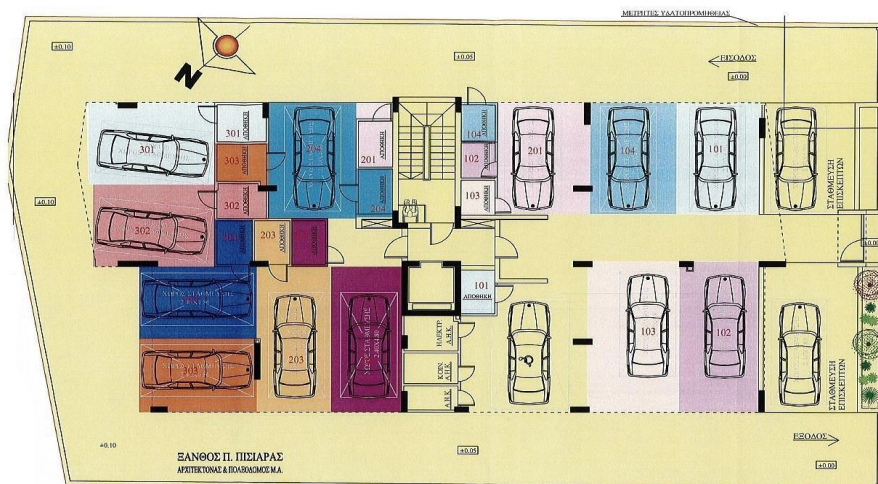








ΚΑΤΟΨΗ 3ου ΟΡΟΦΟΥ



ΧΩΡΟΤΑΞΙΚΟ