

4 Bedroom Apartment for Sale in Limassol - Zakaki

- 4 bedrooms
- 4 W/C
- Internal Area 133.59m²
- Covered Verandas 16.66m²
- Uncovered Verandas 13.3m²
- Roof Garden 55.95m²
- Communal Swimming Pool
- Parking Space
- Storage
- Energy Efficiency "A"



Property Info

Plot / Area Info

Additional info

Covered Area

134

Pool

Yes

Reference Number

13612

Property type

Apartment

Condition

Brand New

Bathrooms

4

Amenities

Location

- Gym

Location: Limassol - Zakaki

Region: **Limassol**

Coordinates: **34.654911399036 / 33.003837908332**

Price: €600 000 + VAT

VAT for this property is **€30,000** or **€114,000**. VAT usually is 19%. If it is your first purchase of property, you can have VAT reduced to 5% for the first 150sq.m. of the property.

| | | | | | |
|-----|-----------------|--------------------|--------------------------------|-----------------|-------------|
| VAT | Excluded | Title transfer fee | None | Common expenses | None |
| | | Price per SQM | €4 478.00/m² | | |

Representative: Kadis Estates

| | | | |
|----------------------------|-------------|------------|--------------------------|
| Registration number | 506 | Email | info@kadis.com.cy |
| License number | 62/E | Legal name | N/A |
| Phone: +35722344842 | | | |

Price change history

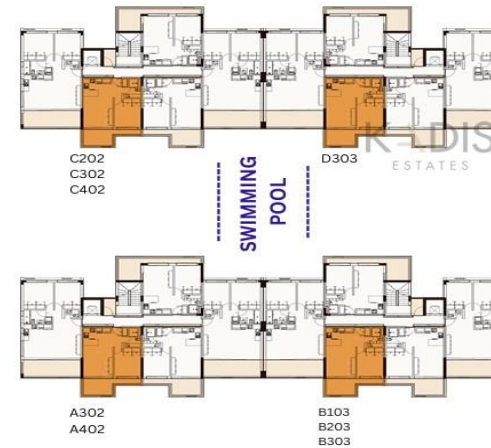
€600 000 on Aug 30, 2025





ONE BED APARTMENT TYPE A

INTERNAL AREA 50.04 m²
 COVERED VERANDA 12.98 m²
 BEDROOMS 1
 BATHROOMS 1
 STORAGE YES
 PARKING YES



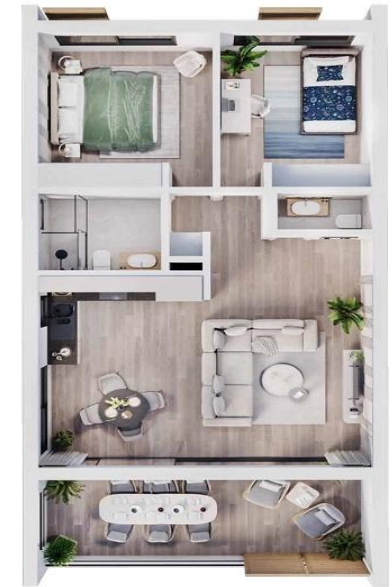
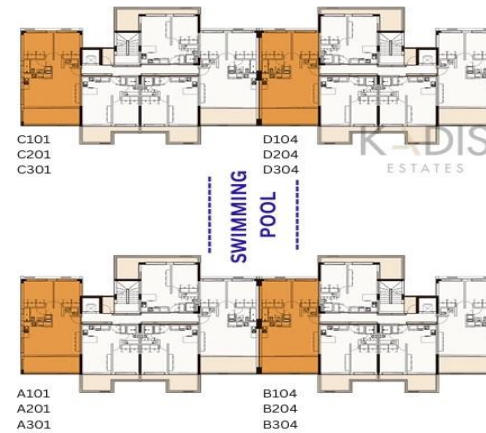
ONE BED APARTMENT TYPE C

INTERNAL AREA 50.10 m²
 COVERED VERANDA 16.50 m²
 BEDROOMS 1
 BATHROOMS 1
 STORAGE YES
 PARKING YES



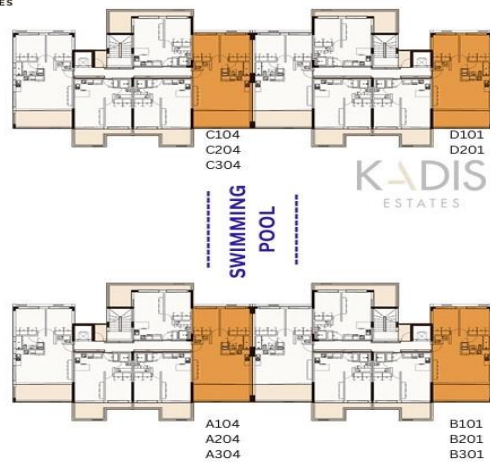
TWO BED APARTMENT TYPE A

INTERNAL AREA 78.21 m²
 COVERED VERANDA 17.45 m²
 BEDROOMS 2
 BATHROOMS 2
 STORAGE YES
 PARKING YES



TWO BED APARTMENT TYPE B

INTERNAL AREA 78.00 m²
 COVERED VERANDA 17.45 m²
 BEDROOMS 2
 BATHROOMS 2
 STORAGE YES
 PARKING YES



THREE BED APARTMENT

INTERNAL AREA 128.20 m²
 COVERED VERANDA 31.19 m²
 BEDROOMS 3
 BATHROOMS 3
 STORAGE YES
 PARKING YES
 ROOF GARDEN 55.95 m²

