

## 1 Bedroom Apartment for Sale in Limassol - Zakaki

- 1 bedroom
- 1 W/C
- Internal Area 50.1m<sup>2</sup>
- Covered Verandas 16.5m<sup>2</sup>
- Communal Swimming Pool
- Parking Space
- Storage
- Energy Efficiency "A"



### Property Info

### Plot / Area Info

### Additional info

Covered Area

**50**

Pool

**Yes**

Reference Number

Property type

Condition

Bathrooms

**13618**

**Apartment**

**Brand New**

**1**

### Amenities

### Location

- Gym

**Location:** Limassol - Zakaki

Region: **Limassol**

Coordinates: **34.654911399036 / 33.003837908332**

**Price: €239 760 + VAT**

VAT for this property is **€11,988** or **€45,554**. VAT usually is 19%. If it is your first purchase of property, you can have VAT reduced to 5% for the first 150sq.m. of the property.

|     |                 |                    |                                |                 |             |
|-----|-----------------|--------------------|--------------------------------|-----------------|-------------|
| VAT | <b>Excluded</b> | Title transfer fee | <b>None</b>                    | Common expenses | <b>None</b> |
|     |                 | Price per SQM      | <b>€4 795.00/m<sup>2</sup></b> |                 |             |

**Representative: Kadis Estates**

|                     |             |            |                          |
|---------------------|-------------|------------|--------------------------|
| Registration number | <b>506</b>  | Email      | <b>info@kadis.com.cy</b> |
| License number      | <b>62/E</b> | Legal name | <b>N/A</b>               |
| Phone: +35722344842 |             |            |                          |

**Price change history**

€239 760 on Aug 30, 2025

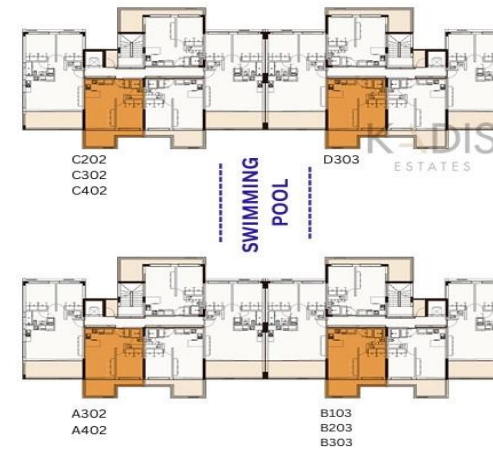






## ONE BED APARTMENT TYPE A

INTERNAL AREA 50.04 m<sup>2</sup>  
COVERED VERANDA 12.98 m<sup>2</sup>  
BEDROOMS 1  
BATHROOMS 1  
STORAGE YES  
PARKING YES





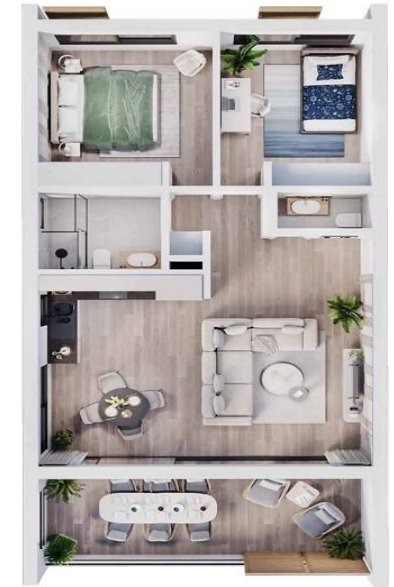
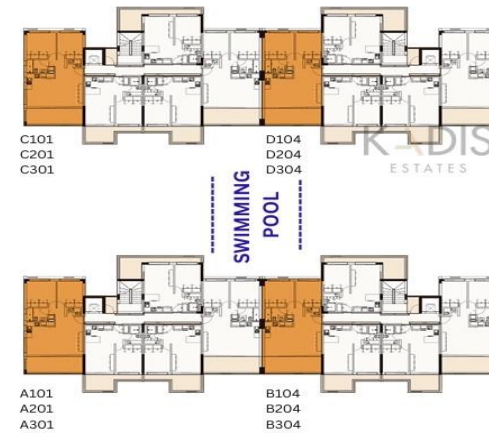
## ONE BED APARTMENT TYPE C

INTERNAL AREA 50.10 m<sup>2</sup>  
COVERED VERANDA 16.50 m<sup>2</sup>  
BEDROOMS 1  
BATHROOMS 1  
STORAGE YES  
PARKING YES



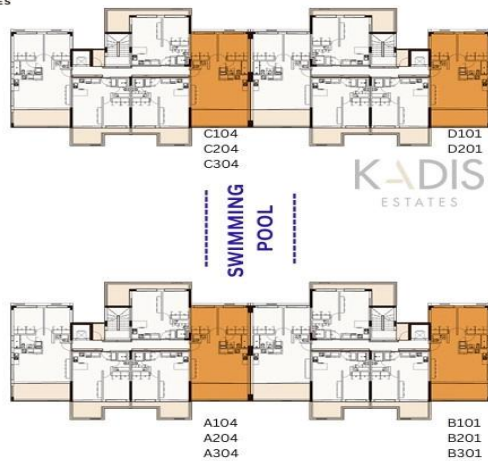
## TWO BED APARTMENT TYPE A

INTERNAL AREA 78.21 m<sup>2</sup>  
COVERED VERANDA 17.45 m<sup>2</sup>  
BEDROOMS 2  
BATHROOMS 2  
STORAGE YES  
PARKING YES



## TWO BED APARTMENT TYPE B

INTERNAL AREA 78.00 m<sup>2</sup>  
COVERED VERANDA 17.45 m<sup>2</sup>  
BEDROOMS 2  
BATHROOMS 2  
STORAGE YES  
PARKING YES



## THREE BED APARTMENT

INTERNAL AREA 128.20 m<sup>2</sup>  
COVERED VERANDA 31.19 m<sup>2</sup>  
BEDROOMS 3  
BATHROOMS 3  
STORAGE YES  
PARKING YES  
ROOF GARDEN 55.95 m<sup>2</sup>

