

## 1 Bedroom Apartment for Sale in Limassol - Zakaki

- 1 bedroom
- 1 W/C
- Internal Area 50.1m<sup>2</sup>
- Covered Verandas 16.5m<sup>2</sup>
- Communal Swimming Pool
- Parking Space
- Storage
- Energy Efficiency "A"



### Property Info

### Plot / Area Info

### Additional info

Covered Area	<b>50</b>	Pool	<b>Yes</b>	Reference Number	<b>13618</b>
				Property type	<b>Apartment</b>
				Condition	<b>Brand New</b>
				Bathrooms	<b>1</b>

### Amenities

### Location

- Gym

**Location:** Limassol - Zakaki

Region: **Limassol**

Coordinates: **34.654911399036 / 33.003837908332**

## Price: €239 760 + VAT

VAT for this property is **€11,988** or **€45,554**. VAT usually is 19%. If it is your first purchase of property, you can have VAT reduced to 5% for the first 150sq.m. of the property.

VAT	<b>Excluded</b>	Title transfer fee	<b>None</b>	Common expenses	<b>None</b>
		Price per SQM	<b>€4 795.00/m<sup>2</sup></b>		

## Representative: Kadis Estates

Registration number	<b>506</b>	Email	<b>info@kadis.com.cy</b>
License number	<b>62/E</b>	Legal name	<b>N/A</b>
Phone: <b>+35722344842</b>			

## Price change history

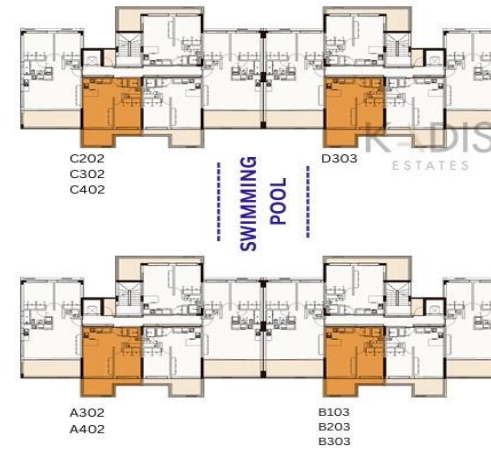
€239 760 on Aug 30, 2025





**ONE BED APARTMENT TYPE A**

INTERNAL AREA 50.04 m<sup>2</sup>  
 COVERED VERANDA 12.98 m<sup>2</sup>  
 BEDROOMS 1  
 BATHROOMS 1  
 STORAGE YES  
 PARKING YES



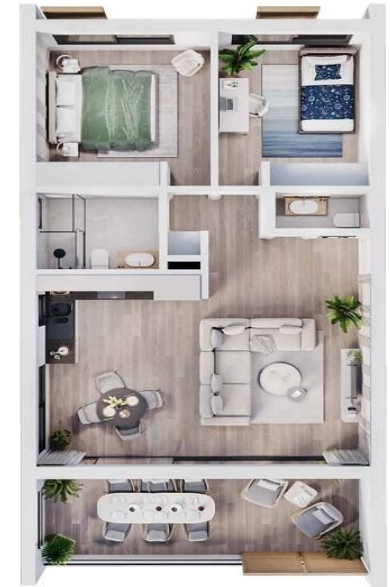
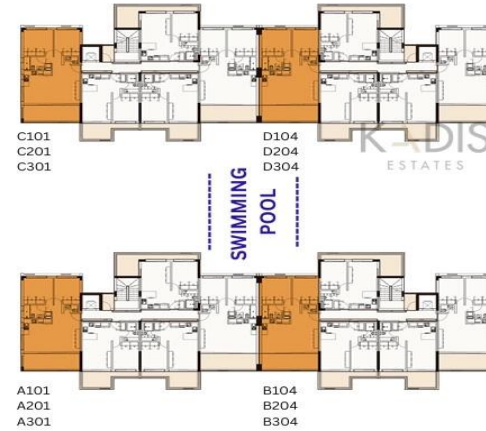
## ONE BED APARTMENT TYPE C

INTERNAL AREA 50.10 m<sup>2</sup>  
 COVERED VERANDA 16.50 m<sup>2</sup>  
 BEDROOMS 1  
 BATHROOMS 1  
 STORAGE YES  
 PARKING YES



## TWO BED APARTMENT TYPE A

INTERNAL AREA 78.21 m<sup>2</sup>  
 COVERED VERANDA 17.45 m<sup>2</sup>  
 BEDROOMS 2  
 BATHROOMS 2  
 STORAGE YES  
 PARKING YES



## TWO BED APARTMENT TYPE B

INTERNAL AREA 78.00 m<sup>2</sup>  
 COVERED VERANDA 17.45 m<sup>2</sup>  
 BEDROOMS 2  
 BATHROOMS 2  
 STORAGE YES  
 PARKING YES



## THREE BED APARTMENT

INTERNAL AREA 128.20 m<sup>2</sup>  
 COVERED VERANDA 31.19 m<sup>2</sup>  
 BEDROOMS 3  
 BATHROOMS 3  
 STORAGE YES  
 PARKING YES  
 ROOF GARDEN 55.95 m<sup>2</sup>

