

2 Bedroom Apartment for Sale in Limassol - Neapolis

Penthouse for sale in a new complex in Neapolis, Limassol. The complex consists of 8 apartments with 2 bedrooms, on the last 4th floor there are 2 penthouses with a roof garden. The project is ideally located between the city center and the waterfront, which provides easy access to all amenities. There is a covered parking space for each apartment. The rack includes air conditioning, underfloor heating, 2 kW solar panels for electricity and electric blinds in the bedrooms.

Property Info

Covered Area **144**
Furnishing **Unfurnished**
Energy Efficiency **A**
Air Conditioning **All rooms, Yes**

Plot / Area Info

Parking **Covered, Yes**

Additional info

Reference Number **176775**
Property type **Apartment**
Condition **Under Construction**
Bathrooms **2**

Amenities

Location

Location: Limassol - Neapolis Region: **Limassol**

Price: €630 000 + VAT

VAT for this property is **€31,500** or **€119,700**. VAT usually is 19%. If it is your first purchase of property, you can have VAT reduced to 5% for the first 150sq.m. of the property.

| | | | | | |
|-----|-----------------|--------------------|---------------------|-----------------|-------------|
| VAT | Excluded | Title transfer fee | None | Common expenses | None |
| | | Price per SQM | €4 375.00/m² | | |

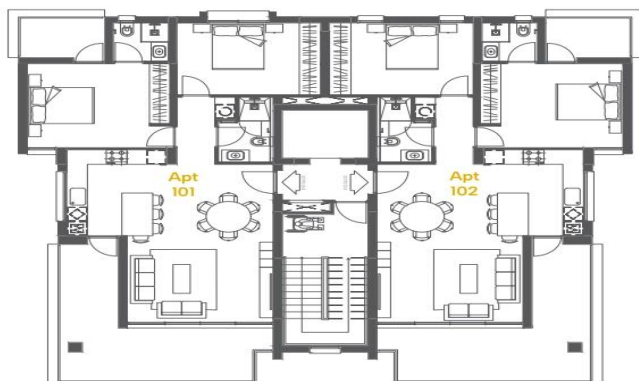
Representative: DOM Real Estate

| | | | |
|---------------------|--------------|------------|------------------------|
| Registration number | 397 | Email | info@dom.com.cy |
| License number | 338/E | Legal name | N/A |
| Phone: +35796644888 | | | |

Price change history

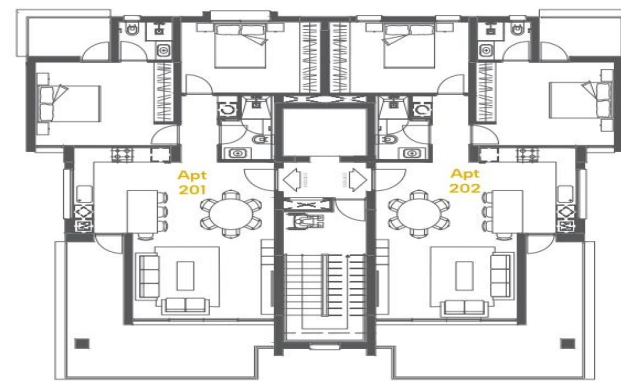
€630 000 on Sep 19, 2025





FLOOR 1

| Floor | Apartment No. | Bedroom No. | Bathrooms No. | Internal Covered m ² | Covered Veranda m ² | Roof Garden m ² | Total Areas m ² |
|-------|---------------|-------------|---------------|---------------------------------|--------------------------------|----------------------------|----------------------------|
| 1st | 101 | 2 | 2 | 84 | 24 | - | 108 |
| 1st | 102 | 2 | 2 | 84 | 24 | - | 108 |



FLOOR 2

| Floor | Apartment No. | Bedroom No. | Bathrooms No. | Internal Covered m ² | Covered Veranda m ² | Roof Garden m ² | Total Areas m ² |
|-------|---------------|-------------|---------------|---------------------------------|--------------------------------|----------------------------|----------------------------|
| 2nd | 201 | 2 | 2 | 84 | 24 | - | 108 |
| 2nd | 202 | 2 | 2 | 84 | 24 | - | 108 |



FLOOR 3

| Floor | Apartment No. | Bedroom No. | Bathrooms No. | Internal Covered m ² | Covered Veranda m ² | Roof Garden m ² | Total Areas m ² |
|-------|---------------|-------------|---------------|---------------------------------|--------------------------------|----------------------------|----------------------------|
| 3rd | 301 | 2 | 2 | 84 | 24 | - | 108 |
| 3rd | 302 | 2 | 2 | 84 | 24 | - | 108 |