

### 3 Bedroom Apartment for Sale in Germasogeia, Limassol District

Set amidst a tranquil hillside, this exclusive development offers a collection of meticulously crafted residences designed to blend seamlessly with the surrounding natural beauty. The architecture combines bold lines and premium materials, creating a modern aesthetic that harmonizes with its environment. Expansive terraces and large windows frame panoramic views, from cityscapes to serene coastal vistas, infusing every space with natural light.

Each residence features thoughtfully planned layouts, ranging from one to three bedrooms, with open-plan living areas that invite personalization. The project also includes exquisite penthouses that epitomize sophisticated living with their p...

#### Property Info

Covered Area	<b>114</b>
Covered Veranda	<b>19</b>
Floor Number	<b>2</b>
Total Number of Floors	<b>4</b>
Furnishing	<b>Unfurnished</b>
Energy Efficiency	<b>A</b>
Air Conditioning	<b>All rooms, Yes</b>

#### Plot / Area Info

Pool	<b>Common, Yes</b>
Parking	<b>Covered, Yes</b>

#### Additional info

Reference Number	<b>10694</b>
Property type	<b>Apartment</b>
Condition	<b>Brand New</b>
Bathrooms	<b>2</b>

#### Amenities

- Parking

#### Location

**Location:** Germasogeia      Region: **Limassol**  
 Coordinates: **34.71024 / 33.0864**

## Price: €599 000 + VAT

VAT for this property is **€29,950** or **€113,810**. VAT usually is 19%. If it is your first purchase of property, you can have VAT reduced to 5% for the first 150sq.m. of the property.

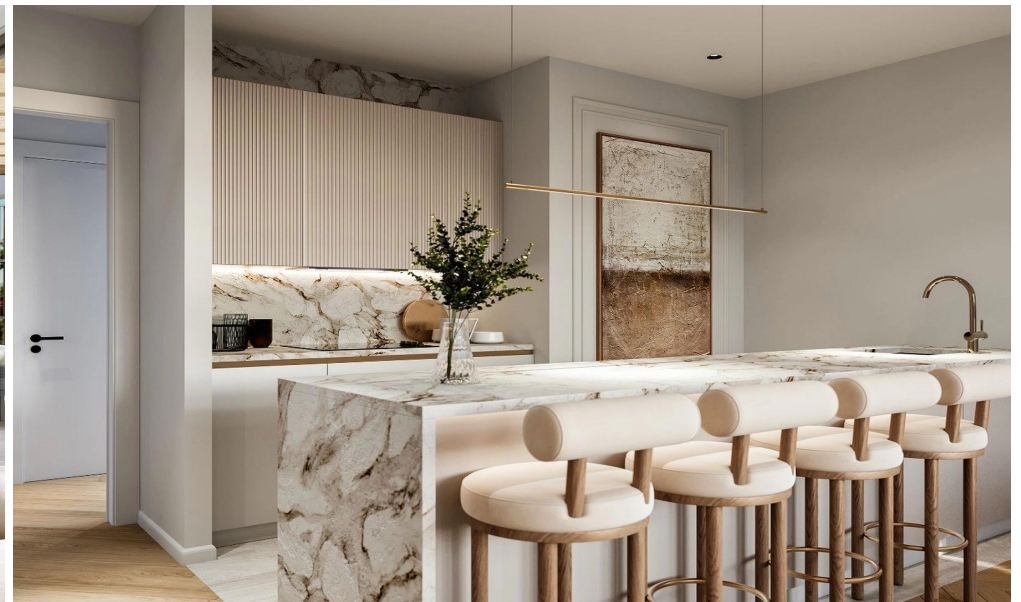
VAT	<b>Excluded</b>	Title transfer fee	<b>None</b>	Common expenses	<b>None</b>
		Price per SQM	<b>€5 254.00/m<sup>2</sup></b>		

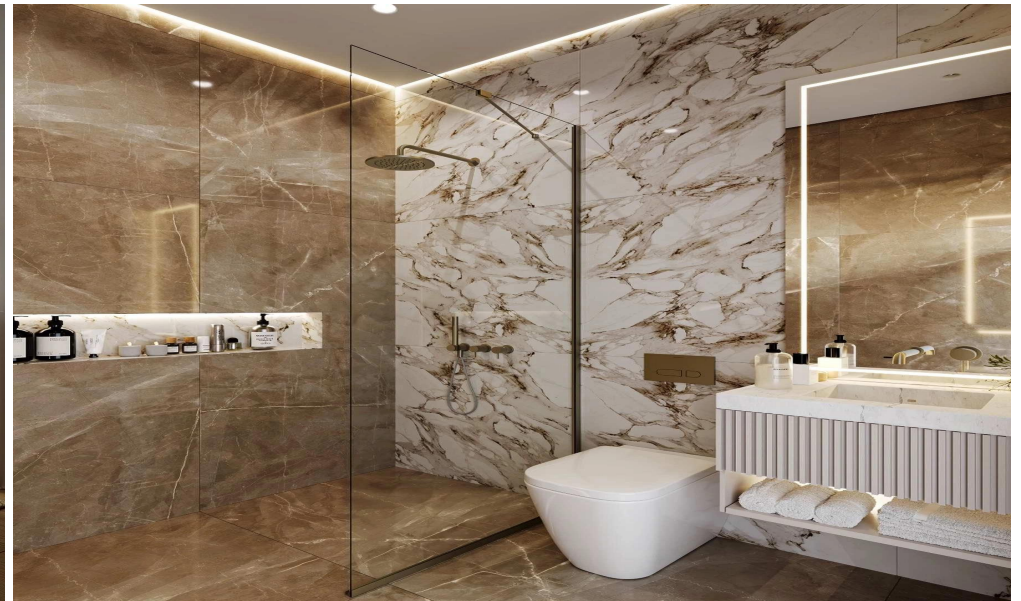
## Representative: Cyprus Sotheby's International Realty

Registration number	<b>1013</b>	Email	<b>info@cyprus-sothebysrealty.com</b>
License number	<b>517/E</b>	Legal name	<b>ConceptRealty Ltd</b>
Phone:	<b>+35726080180, +35797612926</b>		

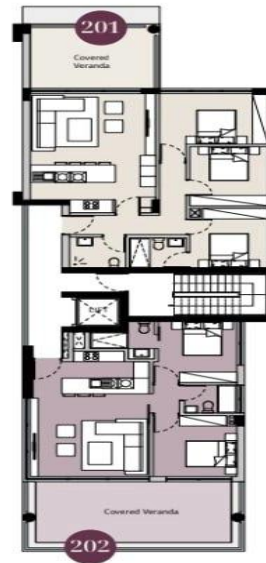
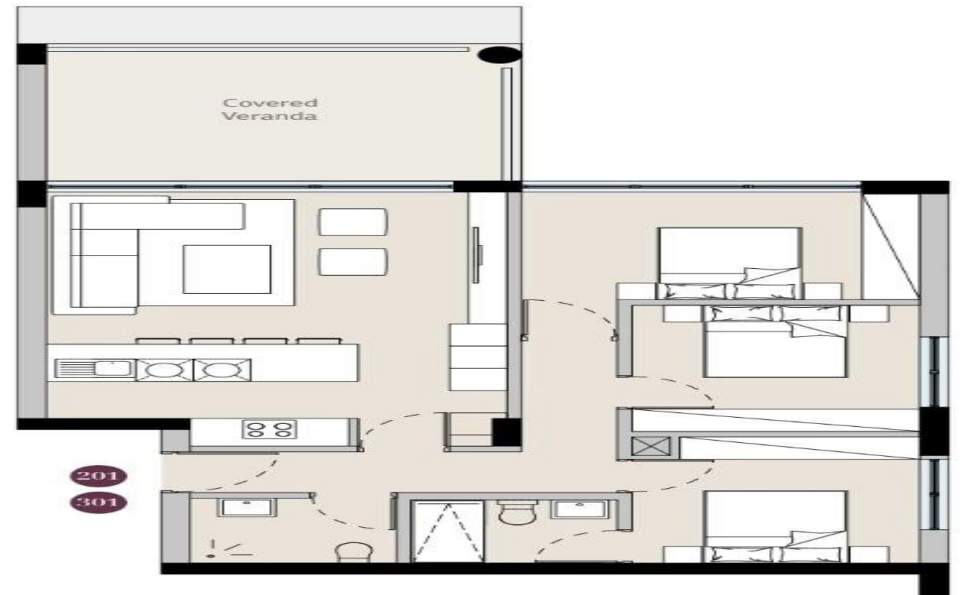
## Price change history

€599 000 on Oct 8, 2025









## SECOND FLOOR *Plan*