


2 Bedroom Apartment for Sale in Limassol - Agios Athanasios

This is a refined gated community nestled on the hills of Limassol, designed for those seeking the perfect balance between outdoor and urban living. 

This exclusive residential project offers a range of thoughtfully designed homes, including spacious 3-bedroom houses and villas, as well as modern 1- and 2-bedroom apartments, providing a variety of living options to suit different lifestyles.

Residential complex features a selection of meticulously crafted apartments, townhouses and villas. The development embodies a design ethos where elegance meets minimalism, characterised by clean lines, open layouts, and high-quality finishes. The architecture and interior design focus on...

Property Info

Covered Area	108
Covered Veranda	18
Floor Number	1
Total Number of Floors	3
Energy Efficiency	A
Air Conditioning	All rooms, Yes

Plot / Area Info

Pool	Common, Yes
Parking	Uncovered, Yes

Additional info

Reference Number	9461
Property type	Apartment
Bathrooms	2

Amenities

- Parking

Location

Location: Limassol - Agios Athanasios
Coordinates: **34.724454372117 / 33.066916462065**

Region: **Limassol**

Price: €478 000 + VAT

VAT for this property is **€23,900** or **€90,820**. VAT usually is 19%. If it is your first purchase of property, you can have VAT reduced to 5% for the first 150sq.m. of the property.

VAT	Excluded	Title transfer fee	~€15 720.00	Common expenses	None
		Price per SQM	€4 426.00/m²		

Representative: RealDeal Estates

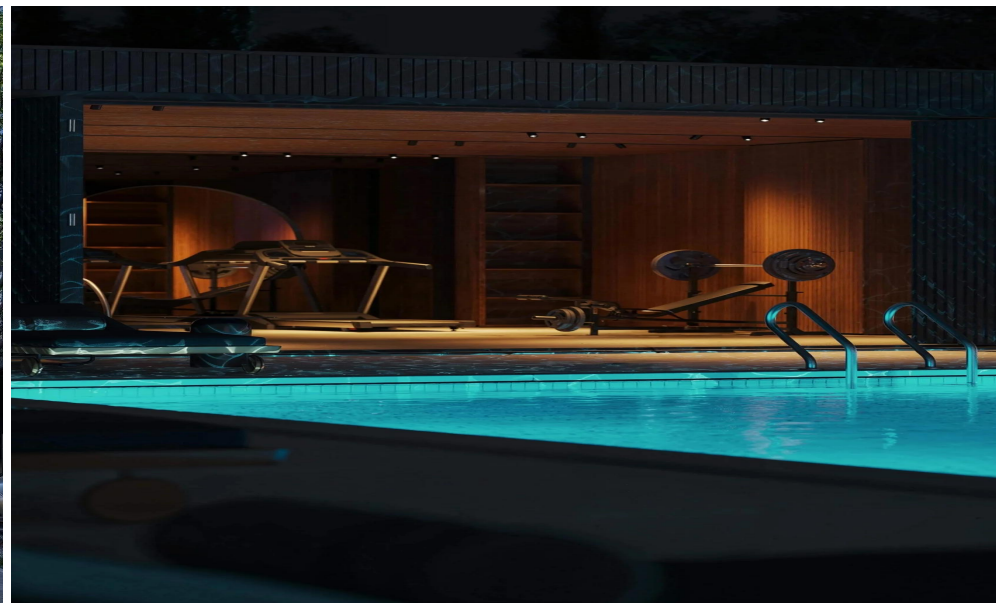
Registration number	1311	Email	info@realdeal.cy
License number	347/E	Legal name	Esperia Estates (Limassol-Paphos) Limited
Phone: +35725255505, +35794001333			

Price change history

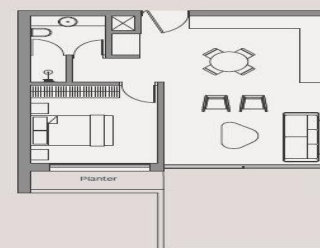
€478 000 on Oct 17, 2025







1 Bedroom Apartment

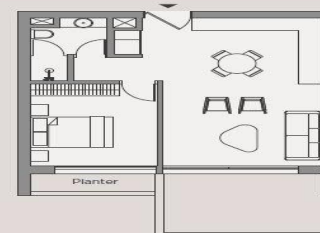


Additional garden area (ground floor only)	31-124m ²
Internal area	53-54m ²
External covered areas	8-14m ²
Other Areas	6-11m ²
Total Covered Area	68-78m ²
Total Areas	68-202m ²
Bedrooms	1
Bathrooms	1
Storage room	1



TYPE A: BLOCK A, BLOCK B

Living / Kitchen	3.85 x 6.80m
Bedroom 1	3.05 x 3.60m



TYPE B: BLOCK C

Living / Kitchen	4.35 x 6.85m
Bedroom 1	3.05 x 3.80m

