

2 Bedroom Apartment for Sale in Empa, Paphos District

This elegant 2-bedroom apartment is part of a striking new development located in the very center of Paphos — surrounded by the City Hall, schools, hospitals, supermarkets, parks, and key urban landmarks.

Designed with a futuristic aesthetic and smart building features, the residence combines modern architecture with functionality and comfort. The apartment offers spacious interiors, high-quality finishes, and large windows that fill the living areas with natural light and city views.

Residents have access to exclusive amenities, including:

- Rooftop infinity swimming pool with panoramic views
- Private gym for residents only

Perfect for those seekin...

Property Info		Plot / Area Info		Additional info	
Covered Area	95	Pool	Common, Yes	Reference Number	9705
Covered Veranda	6	Parking	Covered, Yes	Property type	Apartment
Total Number of Floors	5			Bathrooms	2
Amenities		Location			
• Parking		Location: Empa		Region: Paphos	
		Coordinates: 34.780377092208 / 32.424720535153			

Price: €376 000 + VAT

VAT for this property is **€18,800** or **€71,440**. VAT usually is 19%. If it is your first purchase of property, you can have VAT reduced to 5% for the first 150sq.m. of the property.

VAT	Excluded	Title transfer fee	~€11 640.00	Common expenses	None
		Price per SQM	€3 958.00/m²		

Representative: RealDeal Estates

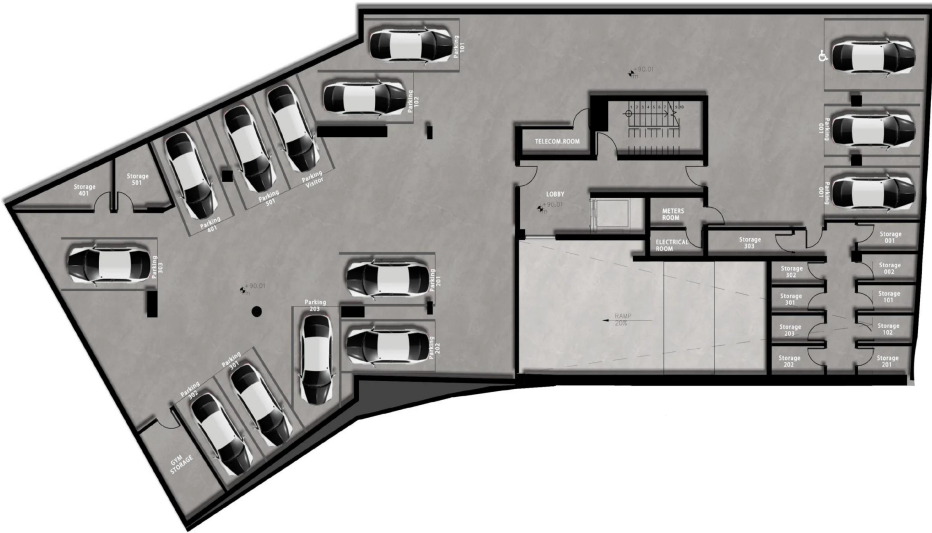
Registration number	1311	Email	info@realdeal.cy
License number	347/E	Legal name	Esperia Estates (Limassol-Paphos) Limited
Phone: +35725255505, +35794001333			

Price change history

€376 000 on Oct 28, 2025

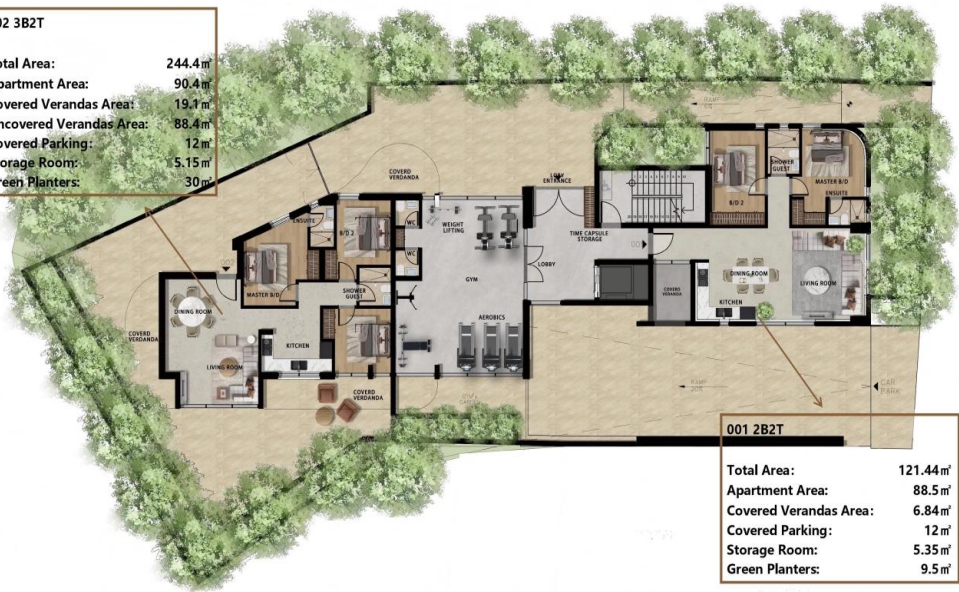






002 3B2T

Total Area:	244.4m ²
Apartment Area:	90.4m ²
Covered Verandas Area:	19.1m ²
Uncovered Verandas Area:	88.4m ²
Covered Parking:	12m ²
Storage Room:	5.15m ²
Green Planters:	30m ²



001 2B2T

Total Area:	121.44m ²
Apartment Area:	88.5m ²
Covered Verandas Area:	6.84m ²
Covered Parking:	12m ²
Storage Room:	5.35m ²
Green Planters:	9.5m ²

