

## 2 Bedroom Apartment for Sale in Limassol

Two Bedroom Apartment For Sale In Limassol Town Centre - Title Deeds (New Build Process) \*\*\* SPECIAL OFFER PRICE!! - Apartment C403 - Was €770,000 + VAT \*\*\* (Price valid until 31.12.25) This is a premium-class residential gated complex designed to combine elegance, comfort, and cultural flair. Surrounding a beautiful communal swimming pool are 4 separate apartment blocks each housing seventeen 1,2,3 & 4 Bedroom apartments. Each apartment has VRV air conditioning and underfloor heating as well as underground parking. There is a 4 Bedroom penthouse apartment in each block which boasts a private roof terrace with views of Limassol. #013...

### Property Info

### Plot / Area Info

Covered Area **99**

### Additional info

Reference Number	<b>msg001n2/blockb</b>
Property type	<b>Apartment</b>
Condition	<b>Brand New</b>
Bathrooms	<b>2</b>

### Amenities

### Location

**Location:** Limassol

Region: **Limassol**

Coordinates: **34.6790769 / 33.0414662**

## Price: €670 000 + VAT

VAT for this property is **€33,500** or **€127,300**. VAT usually is 19%. If it is your first purchase of property, you can have VAT reduced to 5% for the first 150sq.m. of the property.

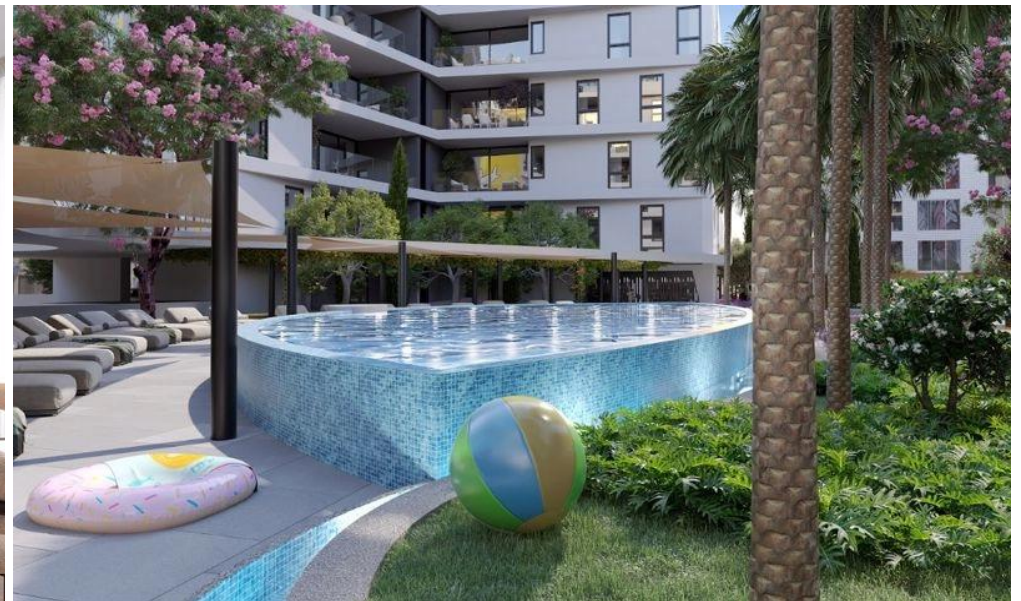
VAT	<b>Excluded</b>	Title transfer fee	<b>None</b>	Common expenses	<b>None</b>
		Price per SQM	<b>€6 768.00/m<sup>2</sup></b>		

## Representative: Emerald Property Consultants

Registration number	<b>845</b>	Email	<b>info@cyprusemerald.com</b>
License number	<b>329/E</b>	Legal name	<b>N/A</b>
Phone: <b>+35723080080</b>			

## Price change history

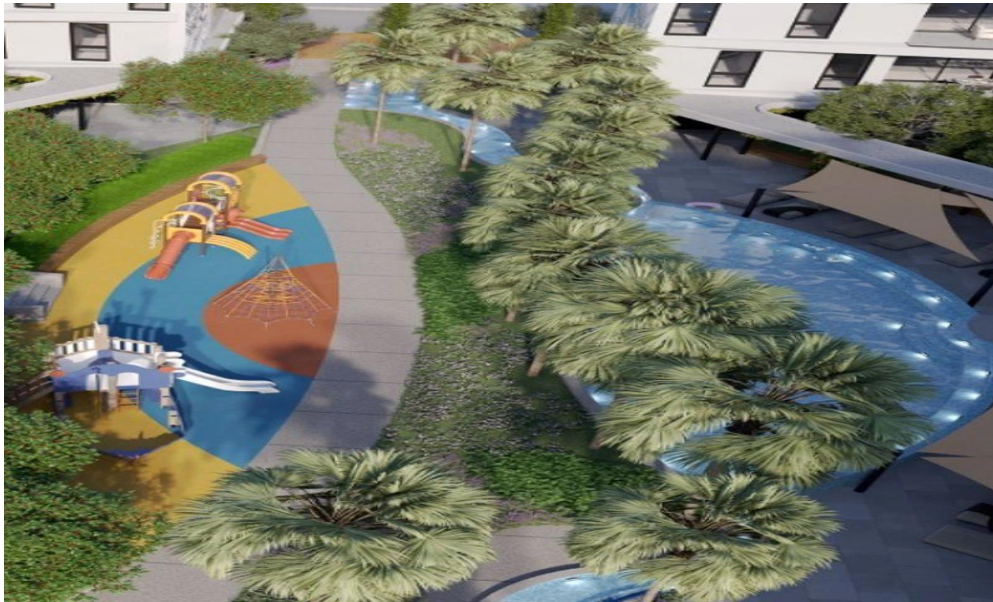
€670 000 on Nov 8, 2025











**Typical Floors 1-4**

**One Bedroom Apartment**

- Bedrooms: 1
- Bathrooms: 1
- Parking: 1
- Storage: 1
- Indoor Area: 51m<sup>2</sup>
- Covered Veranda: 21.9m<sup>2</sup>
- Total Area: 71.9m<sup>2</sup>

**Two Bedroom Apartment**

- Bedrooms: 2
- Bathrooms: 2 en-suite
- W.C.: 1
- Parking: 1
- Storage: 1
- Indoor Area: 99m<sup>2</sup>
- Covered Veranda: 26m<sup>2</sup>
- Total Area: 125m<sup>2</sup>

**Three Bedroom Apartment**

- Bedrooms: 3
- Bathrooms: 2 en-suite
- W.C.: 1
- Parking: 2
- Storage: 1
- Indoor Area: 137.5m<sup>2</sup>
- Covered Veranda: 27.3m<sup>2</sup>
- Total Area: 164.8m<sup>2</sup>

**One Bedroom Apartment**

**Three Bedroom Apartment**

**Two Bedroom Apartment**

Internal Garden View