


1 Bedroom Apartment for Sale in Potamos Germasogeias, Limassol District

One-bedroom apartment 7, with a living area of 58 m², is located on the first floor of a six-storey building D. 

The complex is located 700 m away from the sea and consists of 5 houses. This is a business-class property, which represents all the features of a privileged lifestyle.

This is the project which has everything needed for a prosperous and relaxed life. It offers you an impressive variety of stylish one, two and three-bedroom apartments. Most apartments of the residential complex have a sea view. Everything for your comfort and aesthetic pleasure.

The complex maintains a gym, adults & kids pools, private playground area, and other services for an inspirin...

Property Info

Covered Area	78
Covered Veranda	20
Floor Number	1
Total Number of Floors	6
Energy Efficiency	A
Heating	Underfloor Heating, Yes
Air Conditioning	All rooms, Yes

Plot / Area Info

Pool	Yes
Parking	Covered, Yes

Additional info

Reference Number	10331
Property type	Apartment
Condition	Under Construction
Bathrooms	1

Amenities

- Parking

Location

Location: Potamos Germasogeias Region: **Limassol**
 Coordinates: **34.704637859691 / 33.097611662032**

Price: €413 000 + VAT

VAT for this property is **€20,650** or **€78,470**. VAT usually is 19%. If it is your first purchase of property, you can have VAT reduced to 5% for the first 150sq.m. of the property.

VAT	Excluded	Title transfer fee	None	Common expenses	None
		Price per SQM	€5 295.00/m²		

Representative: RealDeal Estates

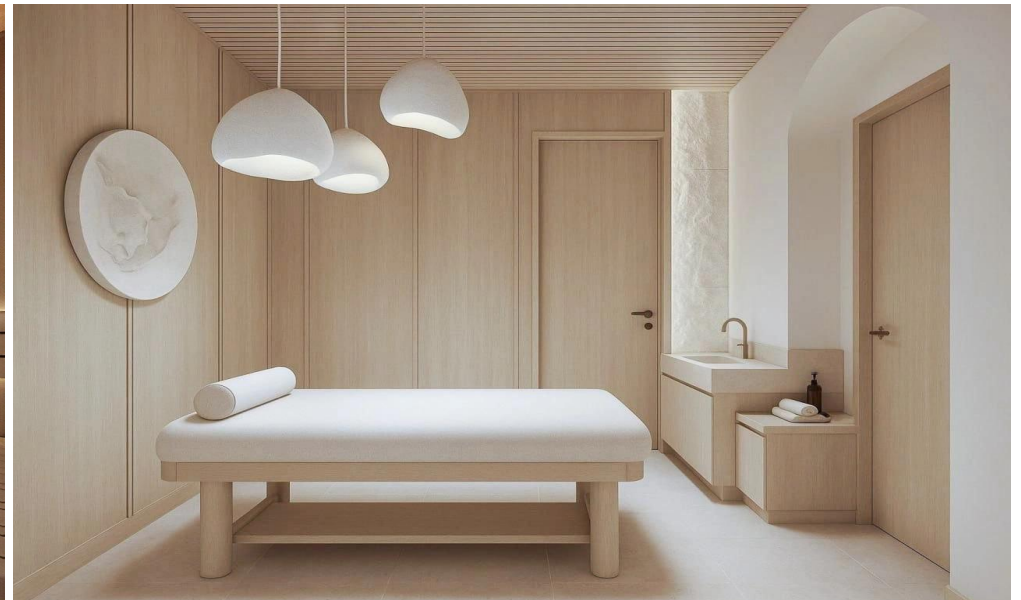
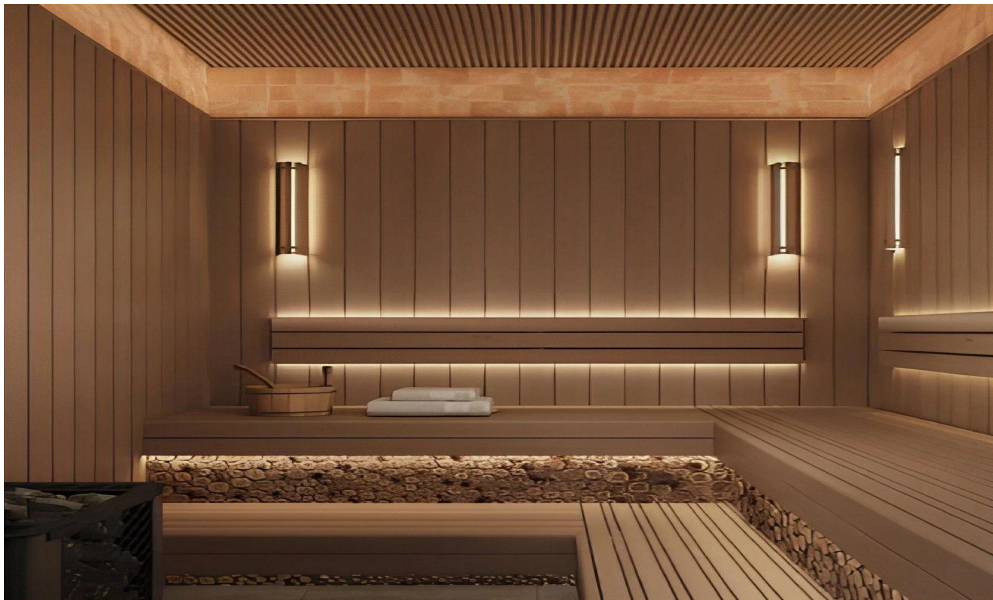
Registration number	1311	Email	info@realdeal.cy
License number	347/E	Legal name	Esperia Estates (Limassol-Paphos) Limited
Phone: +35725255505, +35794001333			

Price change history

€413 000 on Nov 12, 2025









ONE-BEDROOM
APARTMENT
Typical
Lower Floor
Type D

APARTMENT AREA 58 M²
COVERED VERANDA 20 M²



MASTER BEDROOM 15 M²
LIVING ROOM 19.5 M²
BATHROOM 5 M²
KITCHEN 16 M²
COVERED VERANDA 20 M²
CIRCULATION SPACE 2.5 M²