


1 Bedroom Apartment for Sale in Potamos Germasogeias, Limassol District

One-bedroom apartment 20, with a living area of 58 m², is located on the fourth floor of a six-storey building D. 

The complex is located 700 m away from the sea and consists of 5 houses. This is a business-class property, which represents all the features of a privileged lifestyle.

This is the project which has everything needed for a prosperous and relaxed life. It offers you an impressive variety of stylish one, two and three-bedroom apartments. Most apartments of the residential complex have a sea view. Everything for your comfort and aesthetic pleasure.

The complex maintains a gym, adults & kids pools, private playground area, and other services for an inspir...

Property Info

Covered Area	75
Covered Veranda	16
Floor Number	4
Total Number of Floors	6
Energy Efficiency	A
Heating	Underfloor Heating, Yes
Air Conditioning	All rooms, Yes

Plot / Area Info

Pool	Yes
Parking	Covered, Yes

Additional info

Reference Number	10335
Property type	Apartment
Condition	Under Construction
Bathrooms	1

Amenities

- Parking

Location

Location: Potamos Germasogeias Region: **Limassol**
 Coordinates: **34.704637859691 / 33.097611662032**

Price: €426 000 + VAT

VAT for this property is **€21,300** or **€80,940**. VAT usually is 19%. If it is your first purchase of property, you can have VAT reduced to 5% for the first 150sq.m. of the property.

VAT	Excluded	Title transfer fee	None	Common expenses	None
		Price per SQM	€5 680.00/m²		

Representative: RealDeal Estates

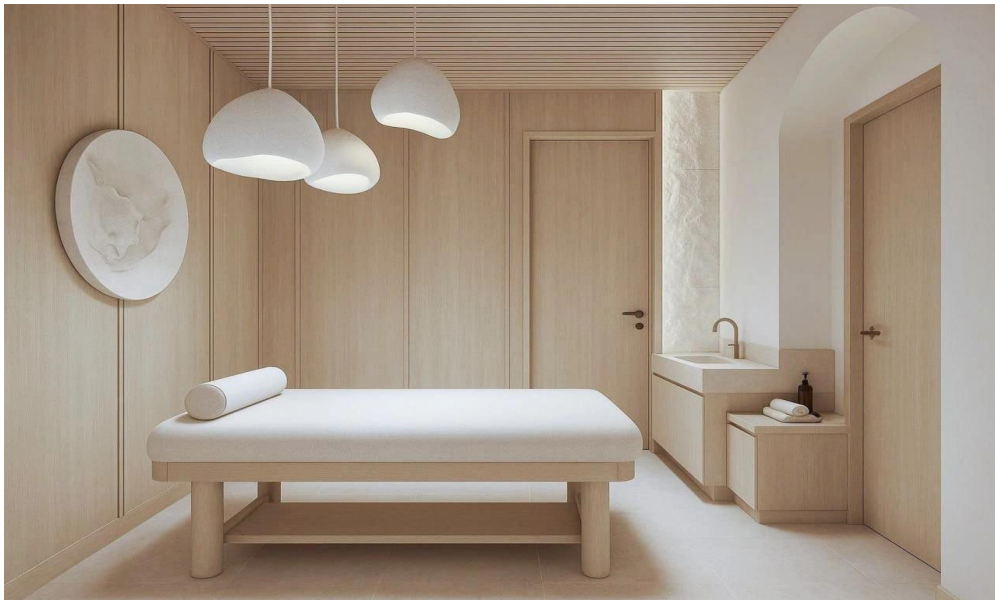
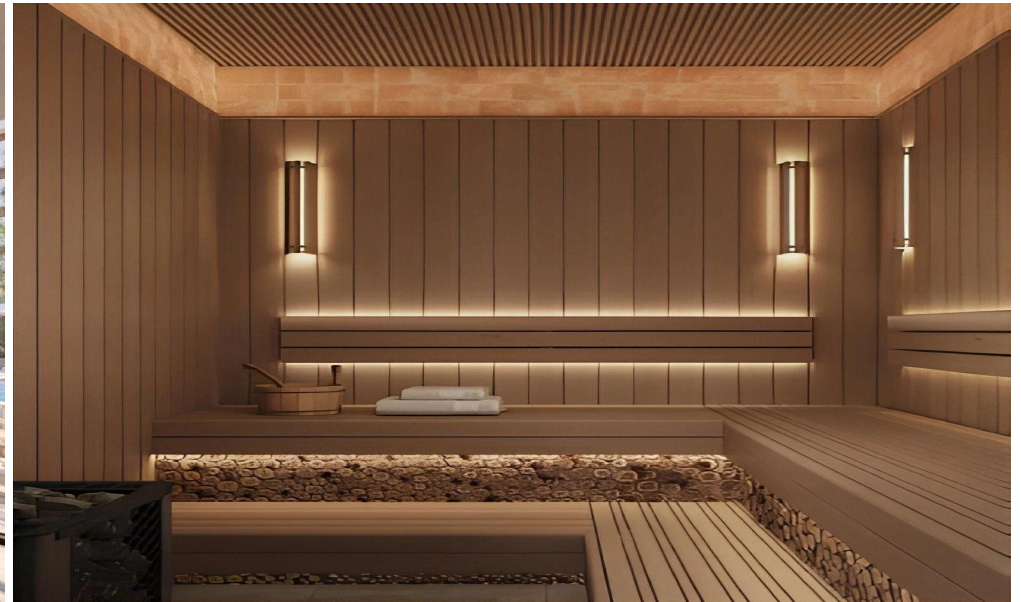
Registration number	1311	Email	info@realdeal.cy
License number	347/E	Legal name	Esperia Estates (Limassol-Paphos) Limited
Phone: +35725255505, +35794001333			

Price change history

€426 000 on Nov 12, 2025







ONE-BEDROOM
APARTMENT
Typical
Lower Floor
Type B

APARTMENT AREA 58 M²
COVERED VERANDA 16 M²



MASTER BEDROOM 18 M²
LIVING ROOM 15 M²
BATHROOM 6 M²
KITCHEN 16 M²
COVERED VERANDA 16 M²
CIRCULATION SPACE 3 M²