


## 4 Bedroom Apartment for Sale in Potamos Germasogeias, Limassol District

Four-bedroom apartment 29, with a living area of 181 m<sup>2</sup>, is located on the sixth floor of a six-storey building D. 

The complex is located 700 m away from the sea and consists of 5 houses. This is a business-class property, which represents all the features of a privileged lifestyle.

This is the project which has everything needed for a prosperous and relaxed life. It offers you an impressive variety of stylish one, two and three-bedroom apartments. Most apartments of the residential complex have a sea view. Everything for your comfort and aesthetic pleasure.

The complex maintains a gym, adults & kids pools, private playground area, and other services for an inspi...

### Property Info

Covered Area	<b>222</b>
Covered Veranda	<b>41</b>
Floor Number	<b>5</b>
Total Number of Floors	<b>6</b>
Energy Efficiency	<b>A</b>
Heating	<b>Underfloor Heating, Yes</b>
Air Conditioning	<b>All rooms, Yes</b>

### Plot / Area Info

Pool	<b>Yes</b>
Parking	<b>Covered, Yes</b>

### Additional info

Reference Number	<b>10338</b>
Property type	<b>Apartment</b>
Condition	<b>Under Construction</b>
Bathrooms	<b>4</b>

### Amenities

- Parking

### Location

**Location:** Potamos Germasogeias  
**Coordinates:** **34.704637859691 / 33.097611662032**

Region: **Limassol**

## Price: €1 510 000 + VAT

VAT for this property is **€144,062** or **€286,900**. VAT usually is 19%. If it is your first purchase of property, you can have VAT reduced to 5% for the first 150sq.m. of the property.

VAT	<b>Excluded</b>	Title transfer fee	<b>None</b>	Common expenses	<b>None</b>
		Price per SQM	<b>€6 802.00/m<sup>2</sup></b>		

## Representative: RealDeal Estates

Registration number	<b>1311</b>	Email	<b>info@realdeal.cy</b>
License number	<b>347/E</b>	Legal name	<b>Esperia Estates (Limassol-Paphos) Limited</b>
Phone: <b>+35725255505, +35794001333</b>			

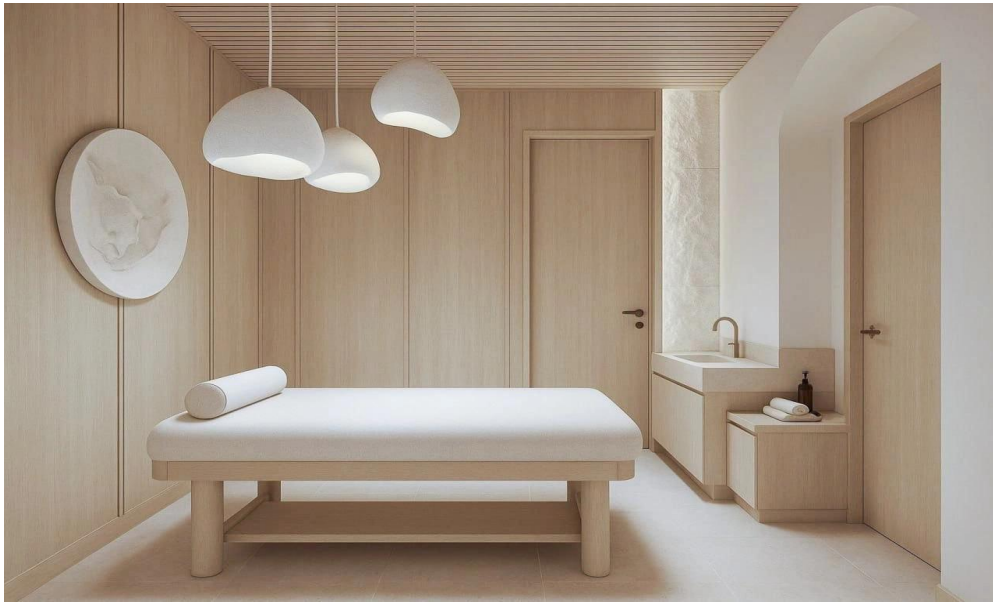
## Price change history

€1 510 000 on Nov 12, 2025









**M** FOUR-BEDROOMS  
Apartment area 181 m<sup>2</sup>

