

## 2 Bedroom Apartment for Sale in Strovolos, Nicosia District

- 2 bedrooms
- 2 W/C
- Internal Area 85m<sup>2</sup>
- Covered Verandas 11m<sup>2</sup>
- Roof Garden 45m<sup>2</sup>
- Covered Parking
- Storage
- Phovoltaic Panels
- Energy Efficiency "A"



### Property Info

Covered Area **85**  
 Heating **Central Heating, Yes**  
 Air Conditioning **All rooms, Yes**

### Plot / Area Info

Parking **Covered, Yes**

### Additional info

Reference Number **15091**  
 Property type **Apartment**  
 Condition **Brand New**  
 Bathrooms **2**

### Amenities

- Elevator

### Location

**Location:** Strovolos Region: **Nicosia**  
 Coordinates: **35.120860567592 / 33.329100110915**

## Price: €230 000 + VAT

VAT for this property is **€11,500** or **€43,700**. VAT usually is 19%. If it is your first purchase of property, you can have VAT reduced to 5% for the first 150sq.m. of the property.

VAT	<b>Excluded</b>	Title transfer fee	<b>None</b>	Common expenses	<b>None</b>
		Price per SQM	<b>€2 706.00/m<sup>2</sup></b>		

## Representative: Kadis Estates

Registration number	<b>506</b>	Email	<b>info@kadis.com.cy</b>
License number	<b>62/E</b>	Legal name	<b>N/A</b>
Phone: <b>+35722344842</b>			

## Price change history

€230 000 on Nov 12, 2025





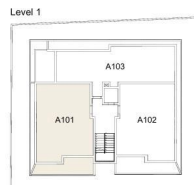


APARTMENT 101 - LEVEL 1



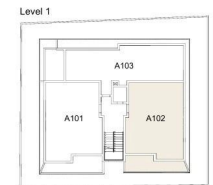
APARTMENT 102 - LEVEL 1

2 BED | 2 BATH | 1 PARKING | 1 STORAGE



Covered Area	80 m <sup>2</sup>
Covered Veranda	15 m <sup>2</sup>
Total	95 m <sup>2</sup>

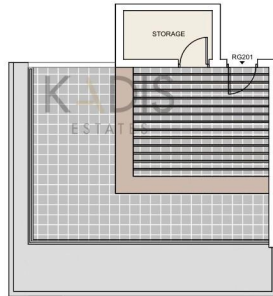
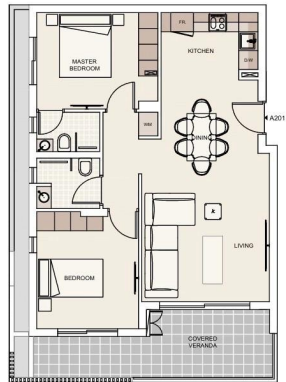
2 BED | 2 BATH | 1 PARKING | 1 STORAGE



Covered Area	81 m <sup>2</sup>
Covered Veranda	14 m <sup>2</sup>
Total	95 m <sup>2</sup>

## PENTHOUSE 201 - LEVEL 2 & 3

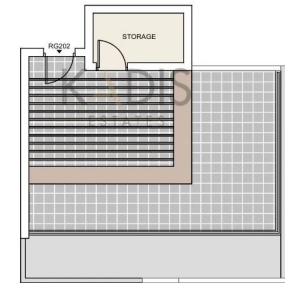
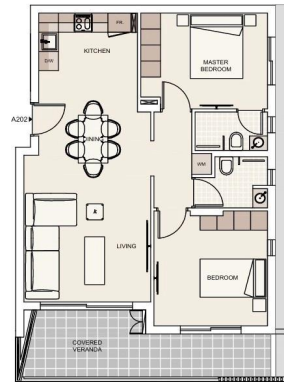
2 BED | 2 BATH | 1 PARKING | 1 STORAGE



Covered Area	82 m <sup>2</sup>
Covered Veranda	15 m <sup>2</sup>
Exclusive Roof Garden	42 m <sup>2</sup>
<b>Total</b>	<b>139 m<sup>2</sup></b>

## PENTHOUSE 202 - LEVEL 2 & 3

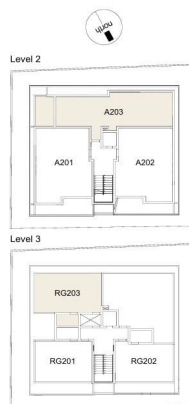
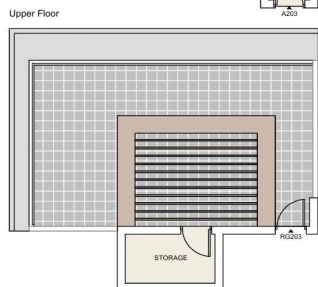
2 BED | 2 BATH | 2 PARKING | 1 STORAGE



Covered Area	83 m <sup>2</sup>
Covered Veranda	14 m <sup>2</sup>
Exclusive Roof Garden	40 m <sup>2</sup>
<b>Total</b>	<b>137 m<sup>2</sup></b>

## PENTHOUSE 203 - LEVEL 2 & 3

2 BED | 2 BATH | 1 PARKING | 1 STORAGE



Covered Area	85 m <sup>2</sup>
Covered Veranda	11 m <sup>2</sup>
Exclusive Roof Garden	45 m <sup>2</sup>
<b>Total</b>	<b>141 m<sup>2</sup></b>