


## 3 Bedroom House for Sale in Geroskipou, Paphos District

This modern three-bedroom villa offers an exceptional blend of luxury, sustainability, and practicality within an exclusive gated development in the heart of Geroskipou, Paphos. Designed for contemporary living, the villa features spacious interiors, stylish architecture, and high-performing energy-efficient systems, making it an ideal choice for both families and investors. 

The home includes bright open-plan living areas, well-proportioned bedrooms, and generous outdoor spaces perfect for relaxation or entertaining. High-quality construction and advanced provisions ensure long-term comfort, security, and efficiency.

Key Features (included in the price):

- Provision ...

### Property Info

Covered Area	<b>184</b>
Covered Veranda	<b>46</b>
Uncovered Veranda	<b>35</b>
Total Number of Floors	<b>2</b>
Energy Efficiency	<b>A</b>

### Plot / Area Info

Plot area	<b>274</b>
Parking	<b>Covered, Yes</b>

### Additional info

Reference Number	<b>10731</b>
Property type	<b>House</b>
Bathrooms	<b>3</b>

### Amenities

- Parking

### Location

**Location:** Geroskipou  
Coordinates: **34.753293151774 / 32.470436119721**

Region: **Paphos**

## Price: €495 000 + VAT

VAT for this property is **€37,555** or **€94,050**. VAT usually is 19%. If it is your first purchase of property, you can have VAT reduced to 5% for the first 150sq.m. of the property.

VAT	<b>Excluded</b>	Title transfer fee	<b>~€16 400.00</b>	Common expenses	<b>None</b>
		Price per SQM	<b>€2 690.00/m²</b>		

## Representative: RealDeal Estates

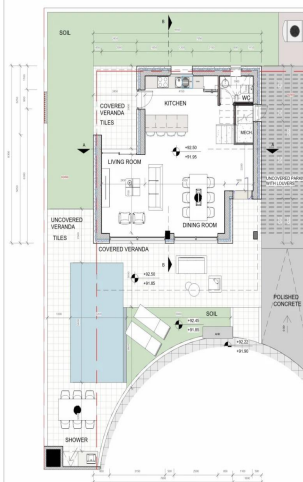
Registration number	<b>1311</b>	Email	<b>info@realdeal.cy</b>
License number	<b>347/E</b>	Legal name	<b>Esperia Estates (Limassol-Paphos) Limited</b>
Phone: <b>+35725255505, +35794001333</b>			

## Price change history

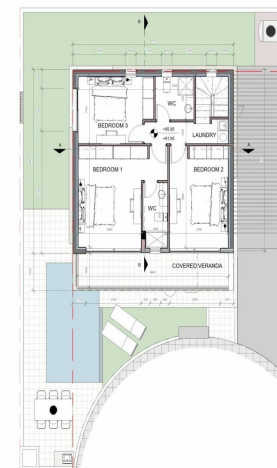
€490 000 on Dec 9, 2025  
 €495 000 on Jan 29, 2026







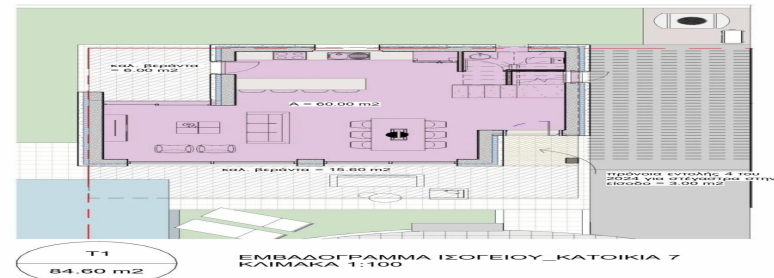
KATONH ISOΓEIOY\_KATOIKIA 7  
KAΨAKA 1:100



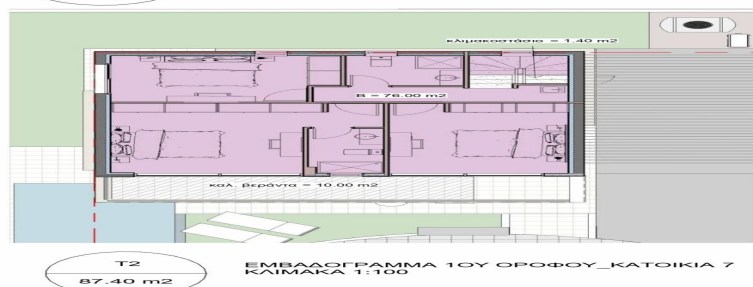
KATONH 1OY OPOΦOY\_KATOIKIA 7  
KAΨAKA 1:100



KATONH OPOΦOYH\_KATOIKIA 7  
KAΨAKA 1:100



T1  
84.60 m2  
ΕΜΒΛΑΔΟΓΡΑΜΜΑ ΙΣΟΓΕΙΟΥ\_KATOIKIA 7  
KAΨAKA 1:100



T2  
87.40 m2  
ΕΜΒΛΑΔΟΓΡΑΜΜΑ 1OY OPOΦOY\_KATOIKIA 7  
KAΨAKA 1:100