


## 1 Bedroom Apartment for Sale in Limassol District

A one-bedroom apartment in this modern development offers smart design, comfort, and a prime location. Ideal for a single resident, a couple, or as an investment. 

Situated in the Municipality of Polemidia, between Spyrou Kyprianou and Omonoias Avenues, it provides easy access to the highway and key amenities, including schools, hospitals, malls, and local markets. The area is family-friendly, growing, and close to the historic centre.

The apartment features a functional layout, natural light, a spacious balcony, and green-facing views, making it a perfect choice for comfortable living and long-term value.

### Property Info

Covered Area	<b>69</b>
Covered Veranda	<b>18</b>
Floor Number	<b>1</b>
Total Number of Floors	<b>3</b>

### Plot / Area Info

Parking **Covered, Yes**

### Additional info

Reference Number	<b>10986</b>
Property type	<b>Apartment</b>
Bathrooms	<b>1</b>

### Amenities

- Parking

### Location

Region: **Limassol**  
 Coordinates: **34.68569882 / 33.01063299**

## Price: €230 000 + VAT

VAT for this property is **€11,500** or **€43,700**. VAT usually is 19%. If it is your first purchase of property, you can have VAT reduced to 5% for the first 150sq.m. of the property.

VAT	<b>Excluded</b>	Title transfer fee	<b>~€5 800.00</b>	Common expenses	<b>None</b>
		Price per SQM	<b>€3 333.00/m<sup>2</sup></b>		

## Representative: RealDeal Estates

Registration number	<b>1311</b>	Email	<b>info@realdeal.cy</b>
License number	<b>347/E</b>	Legal name	<b>Esperia Estates (Limassol-Paphos) Limited</b>
Phone: <b>+35725255505, +35794001333</b>			

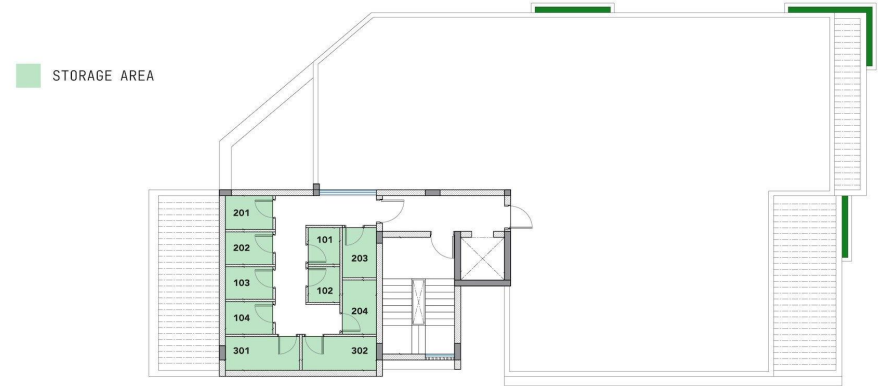
## Price change history

€230 000 on Dec 24, 2025





ROOF PLAN



FIRST FLOOR



GROUND FLOOR

