

3 Bedroom Apartment for Sale in Potamos Germasogeias, Limassol District

3 bedroom penthouse for sale in a boutique residential complex in the Potamos Germasogeia area, Limassol. Just a few steps from the Mediterranean sea, surrounded by cafes, fine restaurants and premium services. Thoughtful design and excellent execution. Choose between spacious 1- or 2-bedroom apartments or an exceptional 3-bedroom penthouse with a private rooftop terrace designed for unforgettable gatherings and quiet sunsets. Each apartment has been carefully planned to enhance daily living: open-plan living areas, spacious covered verandas, and large windows that fill each space with natural light. Finishing of the highest standard: fully finished, semi-massive parquet floors in each room...

Property Info

Covered Area **321**
 Furnishing **Unfurnished**
 Energy Efficiency **A**
 Air Conditioning **All rooms, Yes**

Plot / Area Info

Parking **Covered, Yes**

Additional info

Reference Number **181758**
 Property type **Apartment**
 Condition **Under Construction**
 Bathrooms **3**

Amenities

Location

Location: Potamos Germasogeias Region: **Limassol**

Price: €1 417 500 + VAT

VAT for this property is **€176,591** or **€269,325**. VAT usually is 19%. If it is your first purchase of property, you can have VAT reduced to 5% for the first 150sq.m. of the property.

VAT	Excluded	Title transfer fee	None	Common expenses	None
		Price per SQM	€4 416.00/m²		

Representative: DOM Real Estate

Registration number	397	Email	info@dom.com.cy
License number	338/E	Legal name	N/A
Phone: +35796644888			

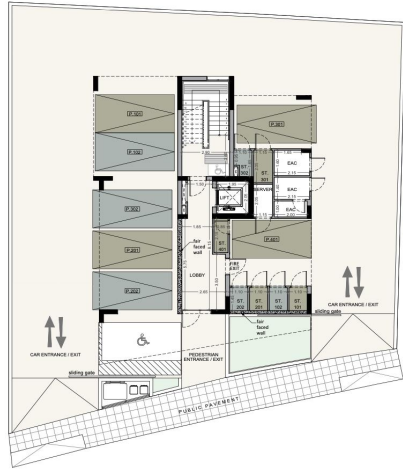
Price change history

€1 417 500 on Jan 21, 2026



⌋ floor plans

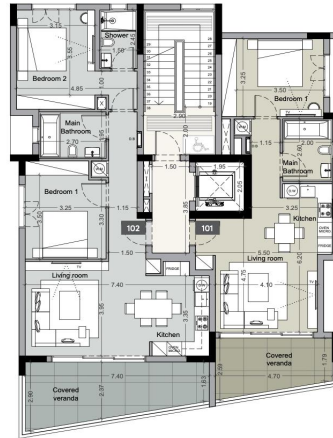
ground floor



⌋ floor plans

1st floor

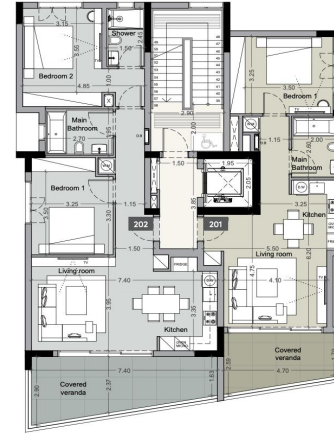
UNIT N°	TOTAL AREA M ²
101	92
102	134



⌋ floor plans

2nd floor

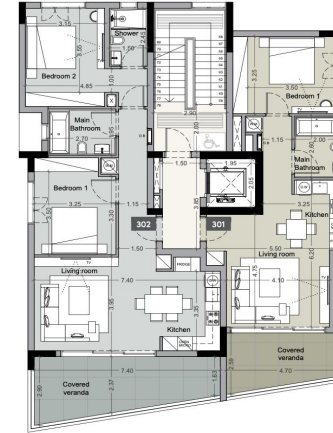
UNIT N°	TOTAL AREA M ²
201	92
202	137



⌋ floor plans

3rd floor

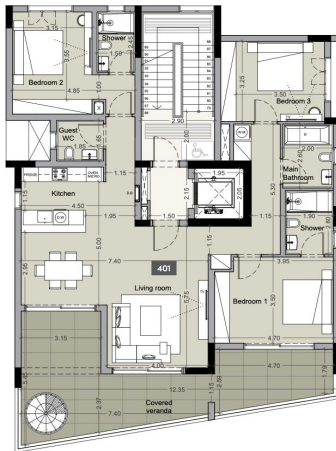
UNIT N°	TOTAL AREA M ²
301	95
302	137



⌋ floor plans

4th floor

UNIT N°	TOTAL AREA M ²
401	376



⌋ floor plans

roof terrace

UNIT N°	ROOF TERRACE M ²
401	114

