

## 1 Bedroom Apartment for Sale in Potamos Germasogeias, Limassol District

1 bedroom apartment for sale in a boutique residential complex in Potamos Germasogeia, Limassol. Just a few steps from the Mediterranean sea, surrounded by cafes, fine restaurants and premium services. Thoughtful design and excellent execution. Choose between spacious 1- or 2-bedroom apartments or an exceptional 3-bedroom penthouse with a private rooftop terrace designed for unforgettable gatherings and quiet sunsets. Each apartment has been carefully planned to enhance daily living: open-plan living areas, spacious covered verandas, and large windows that fill each space with natural light. Finishing of the highest standard: fully finished, semi-massive parquet floors in each room, marble...

### Property Info

Covered Area **72**  
 Furnishing **Unfurnished**  
 Energy Efficiency **A**  
 Air Conditioning **All rooms, Yes**

### Plot / Area Info

Parking **Covered, Yes**

### Additional info

Reference Number **181741**  
 Property type **Apartment**  
 Condition **Under Construction**  
 Bathrooms **1**

### Amenities

### Location

**Location:** Potamos Germasogeias Region: **Limassol**

## Price: €472 500 + VAT

VAT for this property is **€23,625** or **€89,775**. VAT usually is 19%. If it is your first purchase of property, you can have VAT reduced to 5% for the first 150sq.m. of the property.

VAT	<b>Excluded</b>	Title transfer fee	<b>None</b>	Common expenses	<b>None</b>
		Price per SQM	<b>€6 563.00/m<sup>2</sup></b>		

## Representative: DOM Real Estate

Registration number	<b>397</b>	Email	<b>info@dom.com.cy</b>
License number	<b>338/E</b>	Legal name	<b>N/A</b>
Phone: <b>+35796644888</b>			

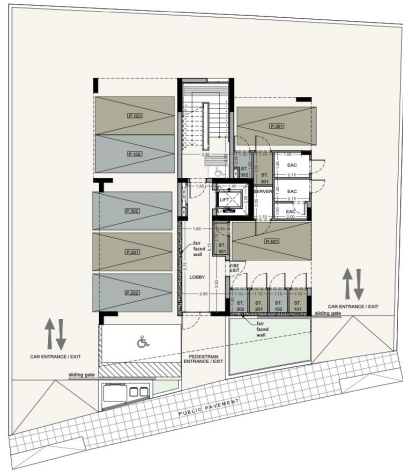
## Price change history

€472 500 on Jan 21, 2026



## ⌋ floor plans

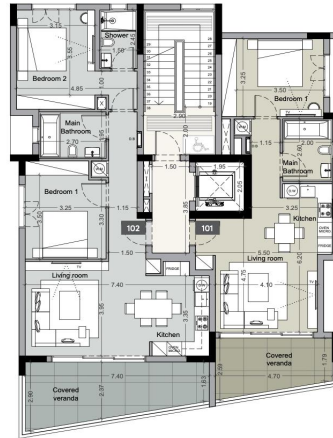
ground floor



## ⌋ floor plans

1st floor

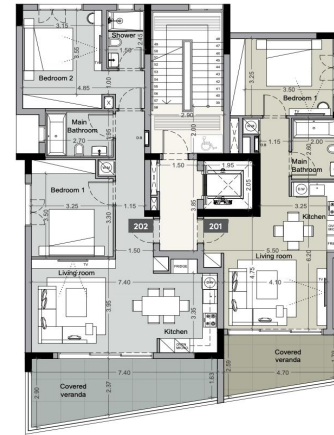
UNIT N°	TOTAL AREA M <sup>2</sup>
101	92
102	134



## ⌋ floor plans

2nd floor

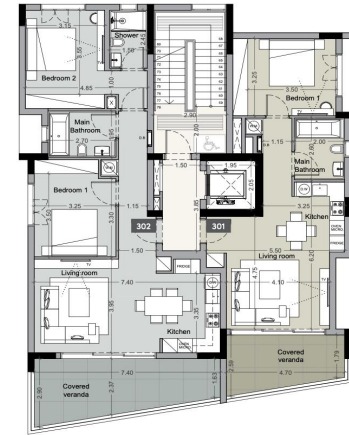
UNIT N°	TOTAL AREA M <sup>2</sup>
201	92
202	137



## ⌋ floor plans

3rd floor

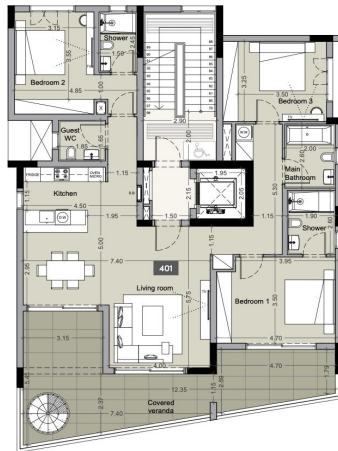
UNIT N°	TOTAL AREA M <sup>2</sup>
301	95
302	137



## ⌋ floor plans

4th floor

UNIT N°	TOTAL AREA M <sup>2</sup>
401	376



## ⌋ floor plans

roof terrace

UNIT N°	ROOF TERRACE M <sup>2</sup>
401	114

