

## 4 Bedroom Apartment for Sale in Parekklesia Tourist Area, Limassol District

Two luxurious two-bedroom apartments occupying an entire floor are offered for sale, featuring stunning panoramic views of Limassol Bay, St Raphael Marina, and the resort gardens.



Designed for comfort and elegance, each apartment has a spacious open-plan living and dining area filled with natural light, creating a welcoming and serene atmosphere. The contemporary Italian kitchen is seamlessly integrated and meets the highest standards of quality.

### Apartment Features:

- Master bedroom with en-suite bathroom
- Second spacious bedroom with separate shower
- Covered veranda for relaxation and entertaining
- Underfloor heating
- VRV air-cond...

### Property Info

Floor Number	<b>6</b>
Total Number of Floors	<b>14</b>
Furnishing	<b>Furnished</b>
Heating	<b>Underfloor Heating, Yes</b>
Air Conditioning	<b>All rooms, Yes</b>

### Plot / Area Info

Pool	<b>Common, Yes</b>
------	--------------------

### Additional info

Reference Number	<b>11452</b>
Property type	<b>Apartment</b>
Condition	<b>Pre-Owned</b>
Construction Year	<b>2020</b>
Bathrooms	<b>4</b>
View	<b>Sea view</b>

### Amenities

- Elevator

### Location

**Location:** Parekklesia Tourist Area      Region: **Limassol**  
**Coordinates:** **34.7129813 / 33.16794992**

**Price: €4 070 000 + VAT**

VAT	<b>Excluded</b>	Title transfer fee	<b>~€159 400.00</b>	Common expenses	<b>None</b>
		Price per SQM	<b>N/A</b>		

## Representative: RealDeal Estates

Registration number	<b>1311</b>	Email	<b>info@realdeal.cy</b>
License number	<b>347/E</b>	Legal name	<b>Esperia Estates (Limassol-Paphos) Limited</b>
Phone: +35725255505, +35794001333			

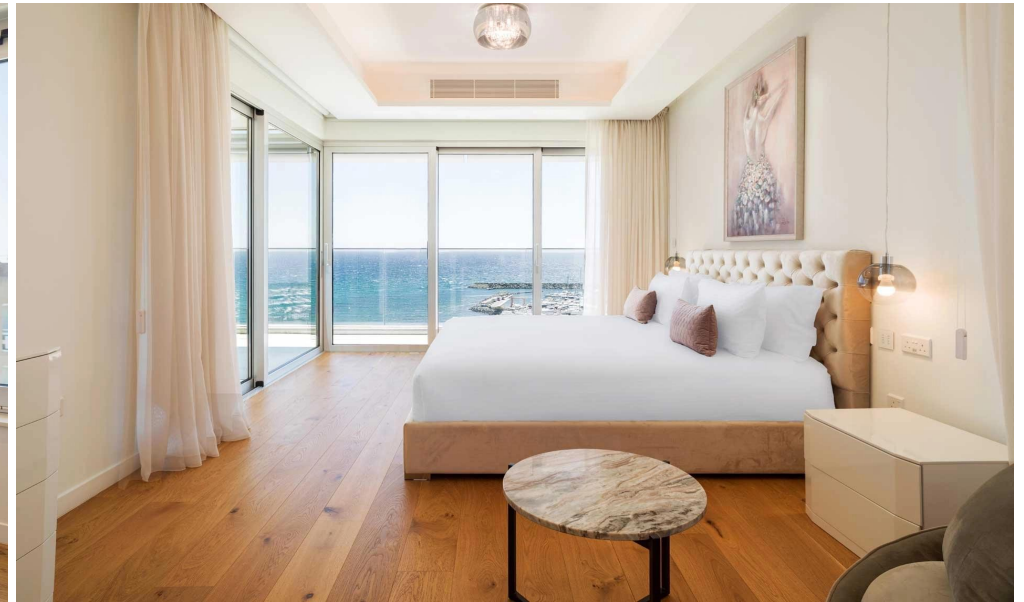
## Price change history

€4 070 000 on Jan 28, 2026













6E

6W

