


4 Bedroom Apartment for Sale in Parekklesia Tourist Area, Limassol District

Two luxurious two-bedroom apartments occupying an entire floor are offered for sale, featuring stunning panoramic views of Limassol Bay, St Raphael Marina, and the resort gardens. 

Designed for comfort and elegance, each apartment has a spacious open-plan living and dining area filled with natural light, creating a welcoming and serene atmosphere. The contemporary Italian kitchen is seamlessly integrated and meets the highest standards of quality.

Apartment Features:

- Master bedroom with en-suite bathroom
- Second spacious bedroom with separate shower
- Covered veranda for relaxation and entertaining
- Underfloor heating
- VRV air-cond...

Property Info

Floor Number	6
Total Number of Floors	14
Furnishing	Furnished
Heating	Underfloor Heating, Yes
Air Conditioning	All rooms, Yes

Plot / Area Info

Pool **Common, Yes**

Additional info

Reference Number	11452
Property type	Apartment
Condition	Pre-Owned
Construction Year	2020
Bathrooms	4
View	Sea view

Amenities

- Elevator

Location

Location: Parekklesia Tourist Area Region: **Limassol**
Coordinates: **34.7129813 / 33.16794992**

Price: €4 070 000 + VAT

VAT	Excluded	Title transfer fee	~€159 400.00	Common expenses	None
		Price per SQM	N/A		

Representative: RealDeal Estates

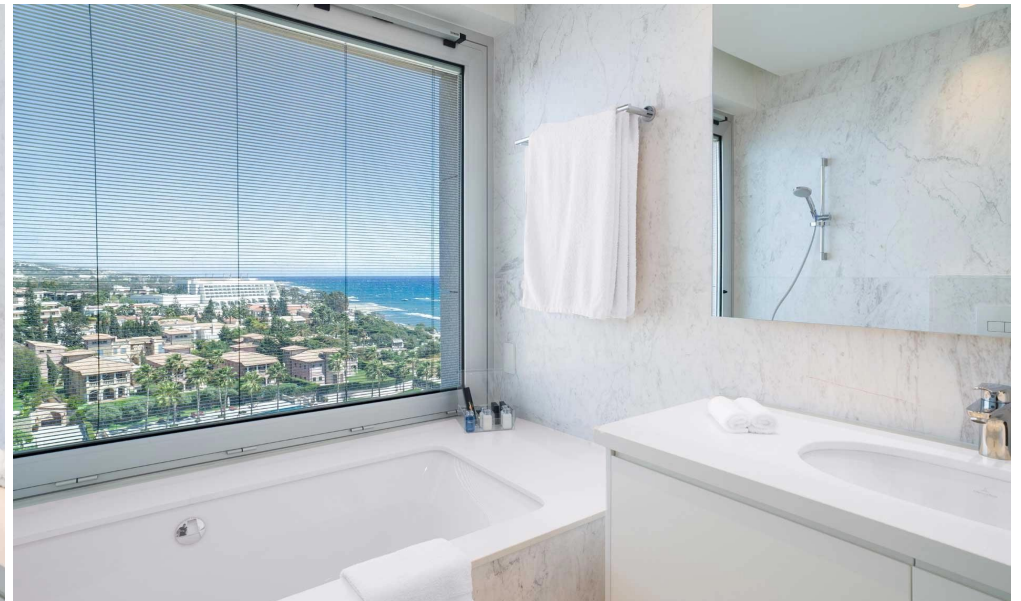
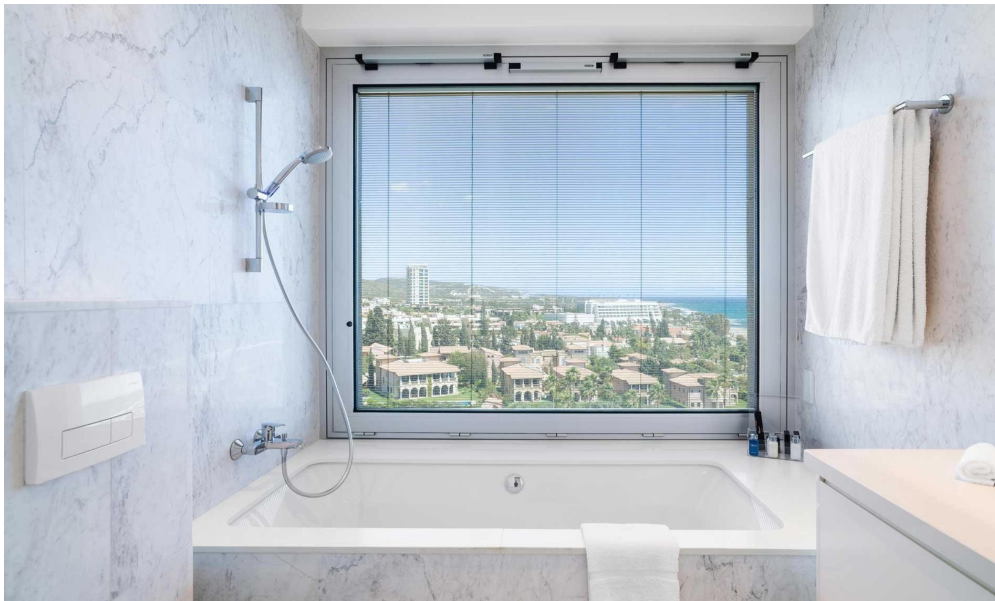
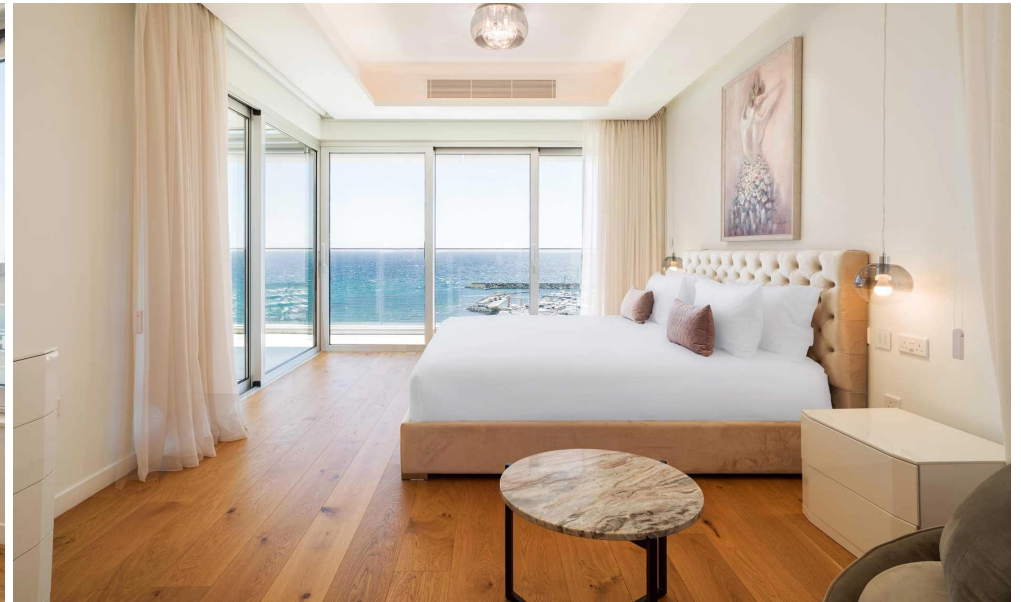
Registration number	1311	Email	info@realdeal.cy
License number	347/E	Legal name	Esperia Estates (Limassol-Paphos) Limited
Phone: +35725255505, +35794001333			

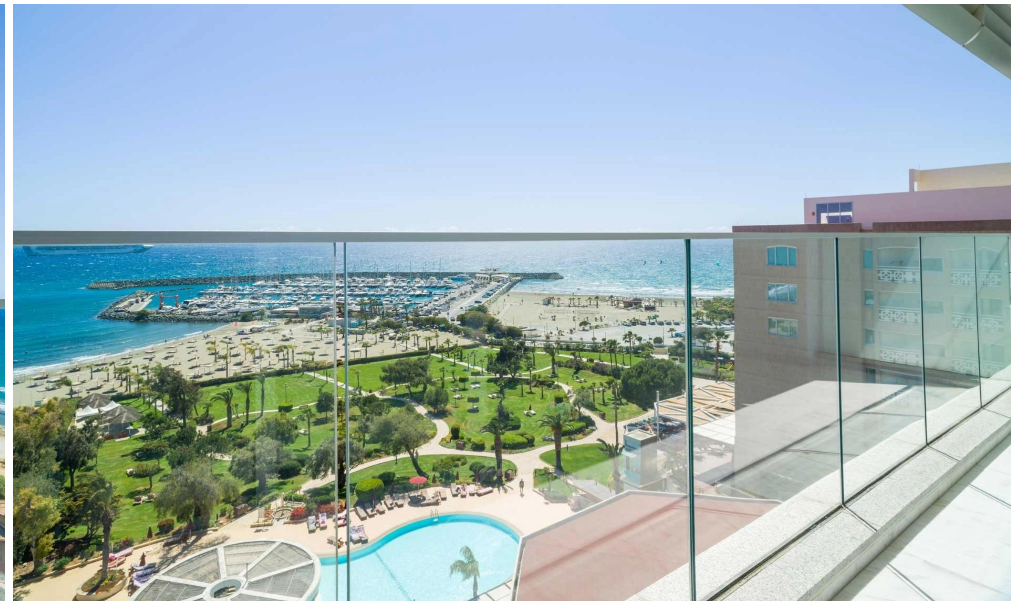
Price change history

€4 070 000 on Jan 28, 2026









6E

6W

