

## 1 Bedroom Apartment for Sale in Limassol - Mesa Geitonia

Located in the heart of Mesa Geitonia, this exclusive contemporary development offers a refined collection of spacious 1- and 2-bedroom apartments. Set within one of Limassol's most established and convenient urban districts, the project combines tranquility with exceptional accessibility. Residents benefit from immediate proximity to key city amenities, reputable schools, retail options, and leisure facilities, all while remaining just minutes from Makariou Street and Limassol's dynamic city center.



This residential complex offers a refined living experience with modern architecture, functional layouts, and premium finishes. Its elevated location provides open views, while the...

### Property Info

Covered Area	<b>62</b>
Covered Veranda	<b>12</b>
Floor Number	<b>2</b>
Total Number of Floors	<b>3</b>

### Plot / Area Info

Parking **Covered, Yes**

### Additional info

Reference Number	<b>11507</b>
Property type	<b>Apartment</b>
Bathrooms	<b>1</b>

### Amenities

- Parking

### Location

**Location:** Limassol - Mesa Geitonia      Region: **Limassol**  
**Coordinates:** **34.69184765 / 33.04399966**

## Price: €255 000 + VAT

VAT for this property is **€12,750** or **€48,450**. VAT usually is 19%. If it is your first purchase of property, you can have VAT reduced to 5% for the first 150sq.m. of the property.

VAT	<b>Excluded</b>	Title transfer fee	<b>~€6 800.00</b>	Common expenses	<b>None</b>
		Price per SQM	<b>€4 113.00/m²</b>		

## Representative: RealDeal Estates

Registration number	<b>1311</b>	Email	<b>info@realdeal.cy</b>
License number	<b>347/E</b>	Legal name	<b>Esperia Estates (Limassol-Paphos) Limited</b>
Phone: <b>+35725255505, +35794001333</b>			

## Price change history

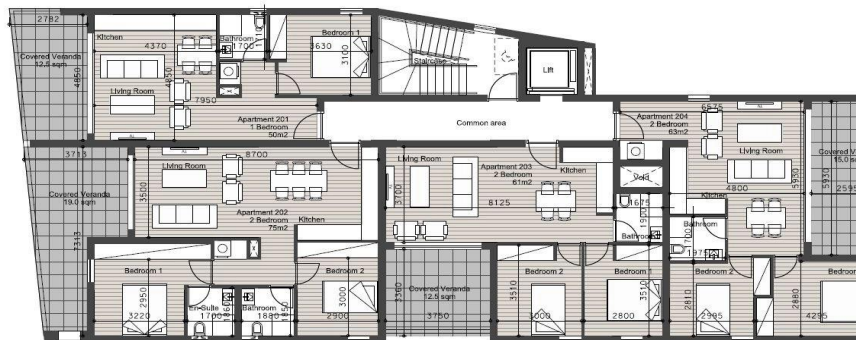
€255 000 on Jan 29, 2026







FLOOR PLANS  
Second Floor



FLOOR PLANS  
Ground Floor

