

## 2 Bedroom Apartment for Sale in Limassol - Zakaki

Apartment for sale in Zakaki area, Limassol. The residential complex is designed for living, working and relaxing. It offers residents a fully equipped gym with wellness treatments, a cafeteria and a coworking space. Families can use the on-site kindergarten, and the green lawns and themed gardens will create a peaceful atmosphere for outdoor recreation. The project combines high-quality residential space with flexible commercial spaces and a variety of amenities: a secure entrance with a security post, an outdoor children's playground, a yoga lawn, landscaped green areas, a public green area with walking paths, a guarded perimeter, charging stations for electric vehicles. Solar pane...

### Property Info

Covered Area	<b>98</b>
Furnishing	<b>Unfurnished</b>
Energy Efficiency	<b>A</b>
Air Conditioning	<b>No</b>

### Plot / Area Info

Parking	<b>Covered, Yes</b>
---------	---------------------

### Additional info

Reference Number	<b>200982</b>
Property type	<b>Apartment</b>
Condition	<b>Under Construction</b>
Bathrooms	<b>2</b>

### Amenities

#### Location

**Location:** Limassol - Zakaki Region: **Limassol**

## Price: €355 000 + VAT

VAT for this property is **€17,750** or **€67,450**. VAT usually is 19%. If it is your first purchase of property, you can have VAT reduced to 5% for the first 150sq.m. of the property.

VAT	<b>Excluded</b>	Title transfer fee	<b>None</b>	Common expenses	<b>None</b>
		Price per SQM	<b>€3 622.00/m<sup>2</sup></b>		

## Representative: DOM Real Estate

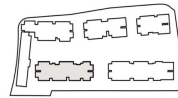
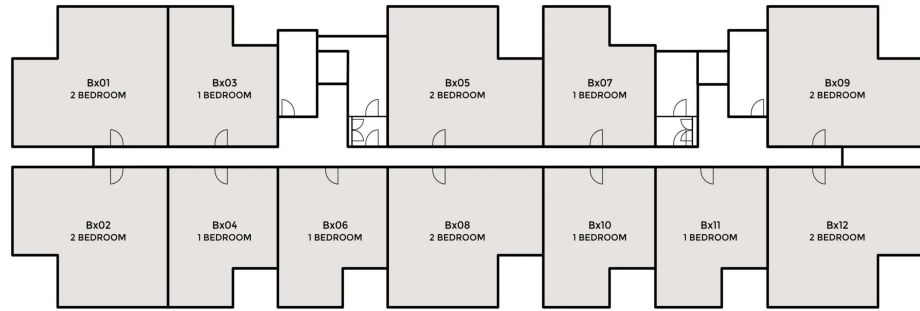
Registration number	<b>397</b>	Email	<b>info@dom.com.cy</b>
License number	<b>338/E</b>	Legal name	<b>N/A</b>
Phone: <b>+35796644888</b>			

## Price change history

€355 000 on Feb 3, 2026



**BLOCK B**  
Typical Layout  
FLOORS: 1<sup>st</sup> - 5<sup>th</sup>



## APARTMENTS

### 1 Bedroom Apartment



Additional roof garden area (top floor only)	30-48m <sup>2</sup>
Internal Area	56-57m <sup>2</sup>
External Covered Areas	12m <sup>2</sup>
Other Areas	8m <sup>2</sup>
Total Covered Area	77-101m <sup>2</sup>
Total Areas	77-147m <sup>2</sup>
Bedrooms	1
Bathrooms	1
Storage Room	1

**TYPE A: BLOCK B**

Living / Kitchen	6.50 x 4.15m
Bedroom 1	3.90 x 3.51m

### 2 Bedroom Apartment



Additional roof garden area (top floor only)	39-100m <sup>2</sup>
Internal Area	80m <sup>2</sup>
External Covered Areas	18m <sup>2</sup>
Other Areas	11m <sup>2</sup>
Total Covered Area	108-142m <sup>2</sup>
Total Areas	108-219m <sup>2</sup>
Bedrooms	2
Bathrooms	2
Storage Room	1

**TYPE A: BLOCK B**

Living / Kitchen	6.50 x 4.23m
Bedroom 1	3.80 x 3.35m
Bedroom 2	3.20 x 3.05m