

3 Bedroom Apartment for Sale in Potamos Germasogeias, Limassol District

The apartment features a 38.88 m² maid's room situated in the basement. 

This is a stylish residential development boasting luxurious apartments and penthouses designed to offer residents a sophisticated living experience with effortless luxury. Each apartment represents a unique elegant masterpiece with its own layout. Opulent living spaces with high-quality finishing materials, coupled with outstanding design, will definitely complement your taste and inspire your inner soul. These master plans enjoy spacious layouts and ample facilities, giving each resident hotel-style home amenities right at their doorstep.

This complex has been created to inspire and captivate your s...

Property Info

Covered Area	194
Covered Veranda	41
Floor Number	2
Total Number of Floors	4
Energy Efficiency	A
Heating	Underfloor Heating, Yes
Air Conditioning	All rooms, Yes

Plot / Area Info

Pool **Common, Yes**

Additional info

Reference Number	11977
Property type	Apartment
Condition	Under Construction
Bathrooms	3

Amenities

- Garden

Location

Location: Potamos Germasogeias Region: **Limassol**
Coordinates: **34.70109208 / 33.08918954**

Price: €2 280 000 + VAT

VAT for this property is **€186,396** or **€433,200**. VAT usually is 19%. If it is your first purchase of property, you can have VAT reduced to 5% for the first 150sq.m. of the property.

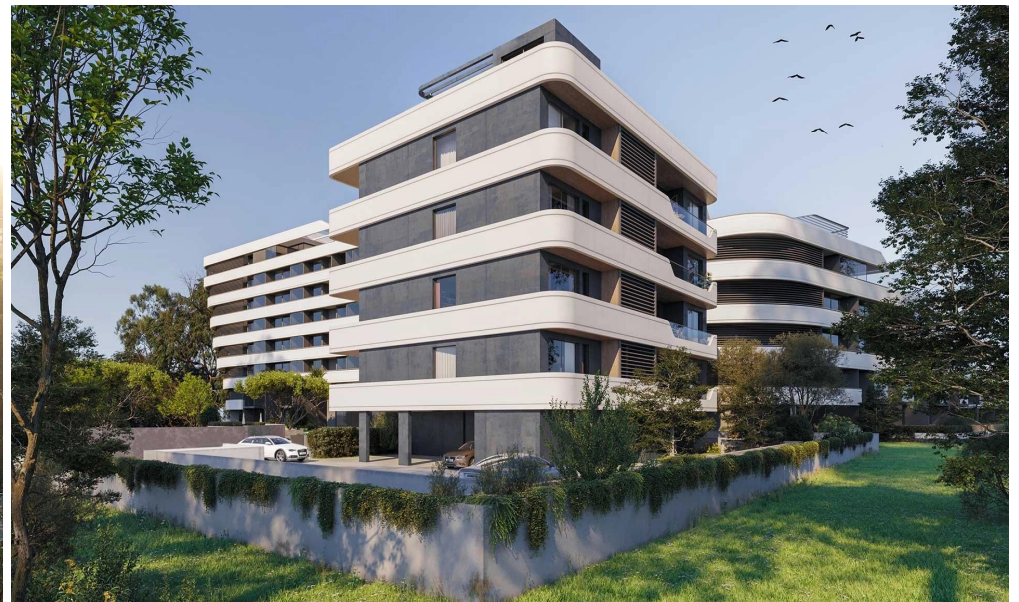
VAT	Excluded	Title transfer fee	None	Common expenses	None
		Price per SQM	€11 753.00/m²		

Representative: RealDeal Estates

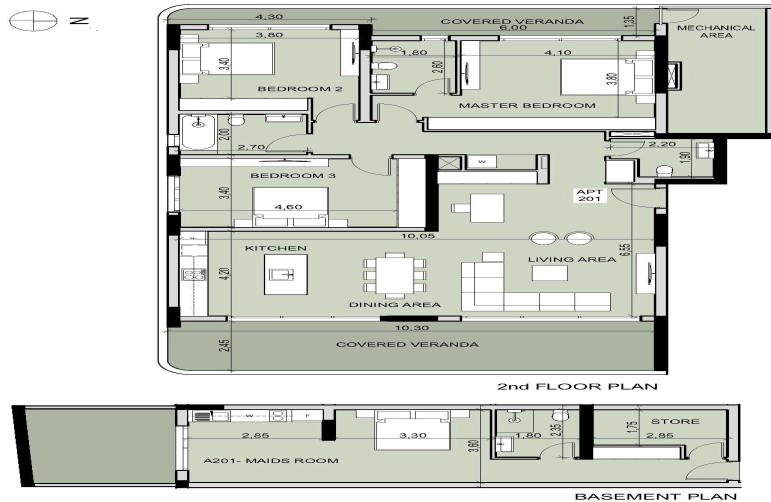
Registration number	1311	Email	info@realdeal.cy
License number	347/E	Legal name	Esperia Estates (Limassol-Paphos) Limited
Phone: +35725255505, +35794001333			

Price change history

€2 280 000 on Feb 25, 2026







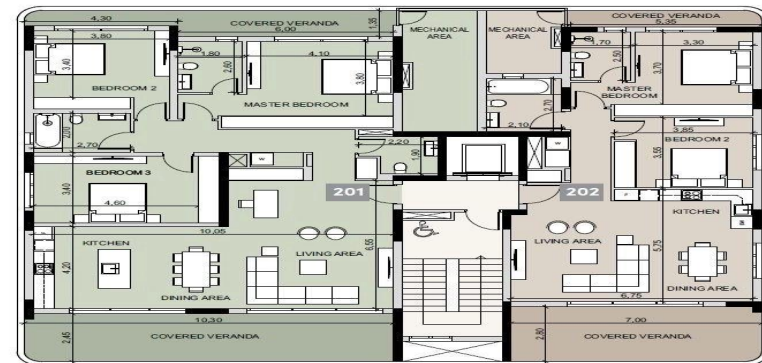
APARTMENT 201

INDOOR AREA	153.19m ²
COVERED VERANDAS	27.72m ² + 13.69m ² = 41.41m ²
MAIDS ROOM & STORE	38.88m ² + 6.93m ² = 45.81m ²

445-03.ppt 12 A201_A202; 100%; 777/2023 5:51 pm

floor 2

3 BEDROOM	2 BEDROOM
Apartment 201	Apartment 202
Total area 241.10 m ²	Total area 170.99 m ²



basement

