

2 Bedroom Apartment for Sale in Potamos Germasogeias, Limassol District

This modern 2-bedroom apartment in Potamos Germasogeias, Limassol is offered for sale in a landmark 25-storey residential tower set within private landscaped gardens and oriented south toward the sea. Designed around open-plan living with private balconies, the residence combines premium city living with resort-style amenities in one of Limassol's most prominent central locations.



Apartment features:

- ✓ Year of construction: 2026
- ✓ Floor: 16
- ✓ Bedrooms: 2
- ✓ Bathrooms: 2
- ✓ Internal area: 82 m²
- ✓ Covered verandas: 18.5 m²
- ✓ Total covered area: 100.5 m²
- ✓ Covered parking: 1 space

Complex features:

- ✓ Lan...

Property Info

Covered Area	100
Covered Veranda	18
Floor Number	16
Total Number of Floors	25
Heating	Underfloor Heating, Yes
Air Conditioning	All rooms, Yes

Plot / Area Info

Parking **Covered, Yes**

Additional info

Reference Number	12006
Property type	Apartment
Condition	Pre-Owned
Construction Year	2026
Bathrooms	2
View	Sea view

Amenities

- Parking

Location

Location: Potamos Germasogeias Region: **Limassol**
 Coordinates: **34.69818125 / 33.091161**

Price: €1 105 500 + VAT

VAT for this property is **€55,275** or **€210,045**. VAT usually is 19%. If it is your first purchase of property, you can have VAT reduced to 5% for the first 150sq.m. of the property.

VAT	Excluded	Title transfer fee	~€40 820.00	Common expenses	None
		Price per SQM	€11 055.00/m²		

Representative: RealDeal Estates

Registration number	1311	Email	info@realdeal.cy
License number	347/E	Legal name	Esperia Estates (Limassol-Paphos) Limited
Phone: +35725255505, +35794001333			

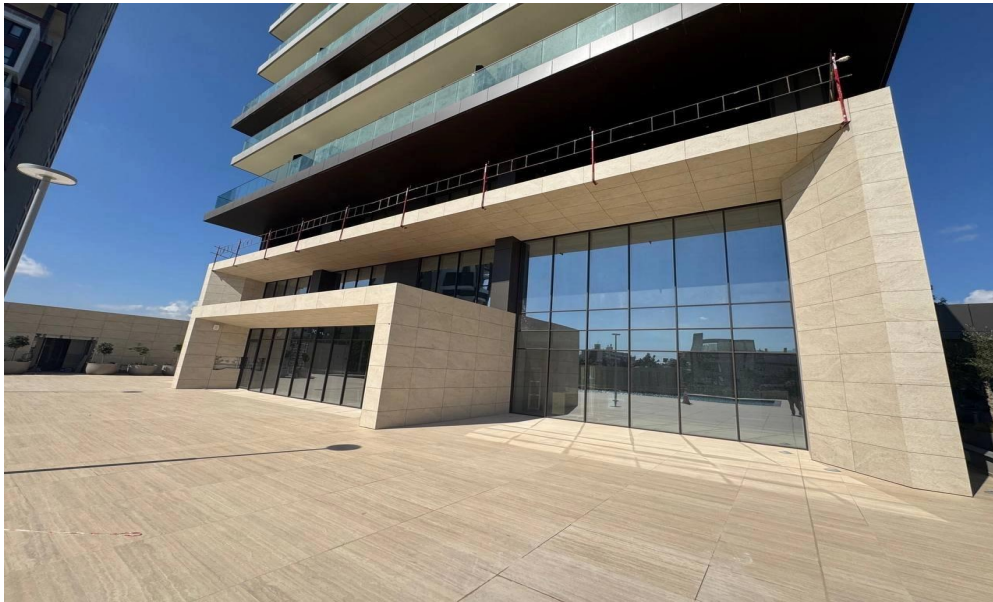
Price change history

€1 105 500 on Feb 27, 2026









5th, 6th, 7th, 9th, 16th, 17th & 18th Apartments

