

2 Bedroom Apartment for Sale in Potamos Germasogeias, Limassol District

Each luxury apartment is set beautifully with breathtaking panoramic city views. Meticulously designed with smart space arrangements that deliver pure comfort and style. Residents will enjoy the opulence of spacious living areas with floor to ceiling windows that allow natural light to flow through the space giving it that sense of freedom. These homes are designed with the best high quality materials and high standards of finish, where premium aesthetics fuse with elevated comforted high spec functionality. Each unique penthouse boasts effortless luxury that is further enhanced by uncompromised panoramic views of the city that will definitely inspire your body, mind and soul. Welcome to ...

Property Info

Covered Area	113
Covered Veranda	23
Floor Number	1
Total Number of Floors	4
Energy Efficiency	A
Heating	Underfloor Heating, Yes

Plot / Area Info

Pool	Common, Yes
Parking	Covered, Yes

Additional info

Reference Number	12148
Property type	Apartment
Condition	Under Construction
Bathrooms	2

Amenities

- Parking

Location

Location: Potamos Germasogeias Region: **Limassol**
 Coordinates: **34.70510533 / 33.093009**

Price: €760 000 + VAT

VAT for this property is **€38,000** or **€144,400**. VAT usually is 19%. If it is your first purchase of property, you can have VAT reduced to 5% for the first 150sq.m. of the property.

VAT	Excluded	Title transfer fee	None	Common expenses	None
		Price per SQM	€6 726.00/m²		

Representative: RealDeal Estates

Registration number	1311	Email	info@realdeal.cy
License number	347/E	Legal name	Esperia Estates (Limassol-Paphos) Limited
Phone: +35725255505, +35794001333			

Price change history

€760 000 on Mar 6, 2026



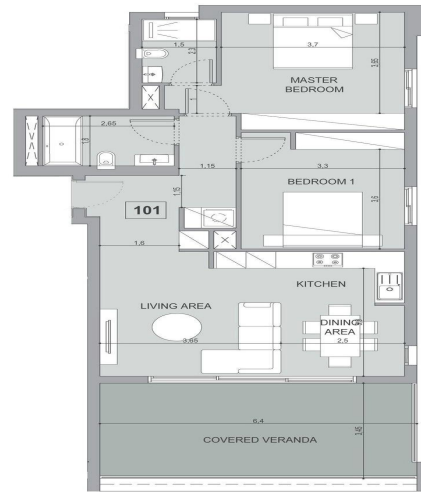
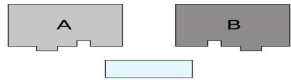




apartment - B101

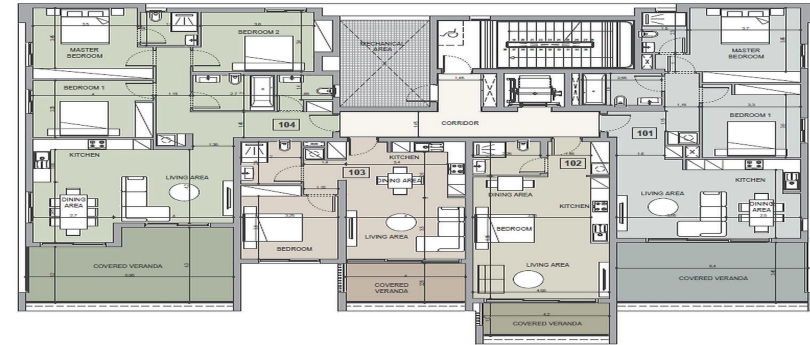


1st floor



• block b

floor 1



ground floor

