

3 Bedroom Apartment for Sale in Parekklesia, Limassol District

The apartment features a studio on the basement level of 45.6 m².



An astonishing modern complex with breathtaking views of the Mediterranean Sea, created to offer genuine seafront living at its finest.

Inspired by its prestigious location, this stunning development is situated next to St. Raphael Marina and some of Limassol's finest restaurants. It offers iconic residential luxury complemented by 5-star services.

This exclusive residential complex comprises just 5 apartments and 2 luxurious penthouses with private rooftop pools. Each apartment includes two parking spaces, a storage room, and a maid's room.

Indoor facilities include a communal swimming pool...

Property Info

Covered Area	146
Covered Veranda	27
Floor Number	2
Total Number of Floors	4
Energy Efficiency	A
Heating	Underfloor Heating, Yes

Plot / Area Info

Pool **Common, Yes**

Additional info

Reference Number	12307
Property type	Apartment
Condition	Under Construction
Bathrooms	4
View	Sea view

Amenities

- Elevator

Location

Location: Parekklesia
Coordinates: **34.71289311 / 33.16594363**

Region: **Limassol**

Price: €4 060 000 + VAT

VAT for this property is **€203,000** or **€771,400**. VAT usually is 19%. If it is your first purchase of property, you can have VAT reduced to 5% for the first 150sq.m. of the property.

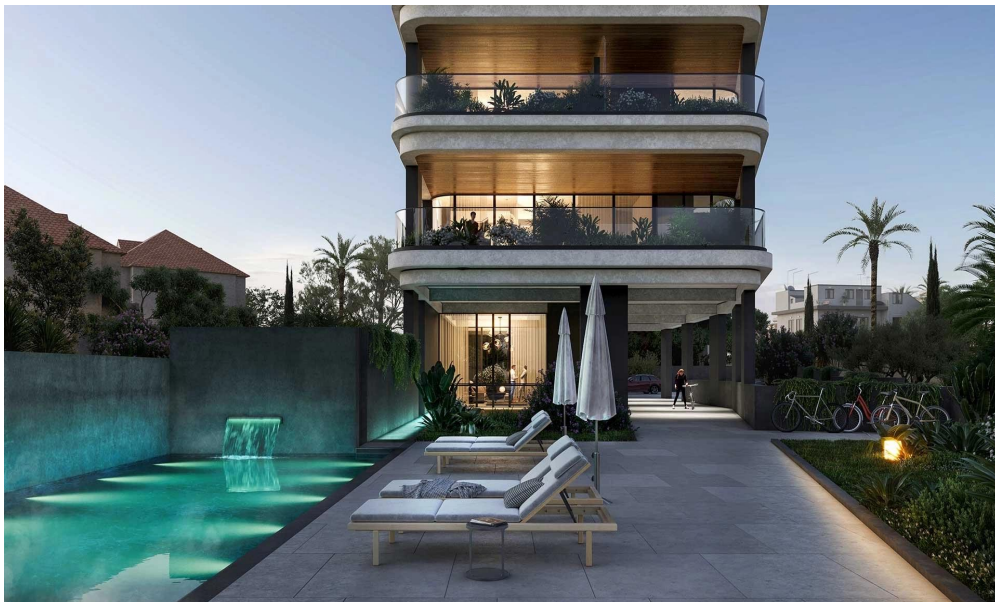
VAT	Excluded	Title transfer fee	None	Common expenses	None
		Price per SQM	€27 808.00/m²		

Representative: RealDeal Estates

Registration number	1311	Email	info@realdeal.cy
License number	347/E	Legal name	Esperia Estates (Limassol-Paphos) Limited
Phone: +35725255505, +35794001333			

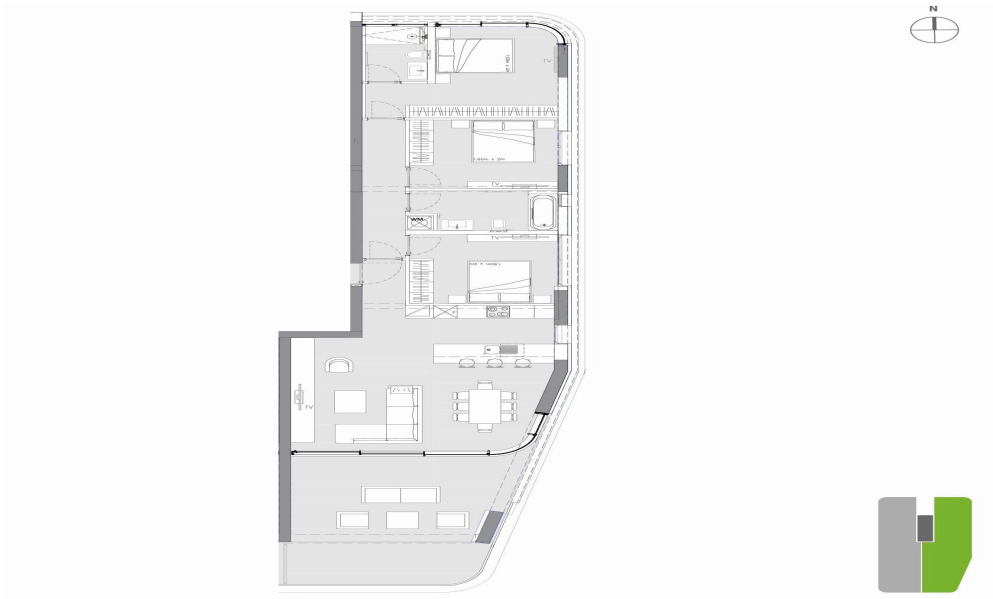
Price change history

€4 060 000 on Mar 14, 2026

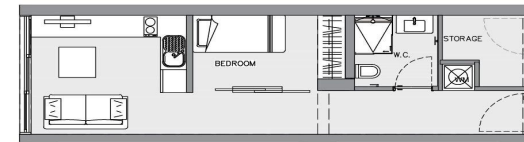








2nd floor



basement

