


2 Bedroom Apartment for Sale in Potamos Germasogeias, Limassol District

This modern two-bedroom apartment is part of a boutique residential development that combines innovative architecture with sustainable design, creating a perfect balance between urban living and natural elements. The building features a sleek contemporary façade enhanced with integrated greenery, offering a unique and serene living environment. 

The apartment is designed with a focus on comfort, functionality, and style, featuring spacious interiors, high-end finishes, and large balconies that bring in natural light and extend the living space outdoors.

Key Features:

- Two well-proportioned bedrooms, including a master bedroom
- Open-plan kitchen and living a...

Property Info

Covered Area	114
Covered Veranda	25
Floor Number	3
Total Number of Floors	4
Air Conditioning	All rooms, Yes

Plot / Area Info

Pool	Common, Yes
Parking	Covered, Yes

Additional info

Reference Number	12391
Property type	Apartment
Condition	Under Construction
Bathrooms	2

Amenities

- Parking

Location

Location: Potamos Germasogeias Region: **Limassol**
Coordinates: **34.70441736 / 33.0937171**

Price: €560 000 + VAT

VAT for this property is **€28,000** or **€106,400**. VAT usually is 19%. If it is your first purchase of property, you can have VAT reduced to 5% for the first 150sq.m. of the property.

VAT	Excluded	Title transfer fee	None	Common expenses	None
		Price per SQM	€4 912.00/m²		

Representative: RealDeal Estates

Registration number	1311	Email	info@realdeal.cy
License number	347/E	Legal name	Esperia Estates (Limassol-Paphos) Limited
Phone:	+35725255505, +35794001333		

Price change history

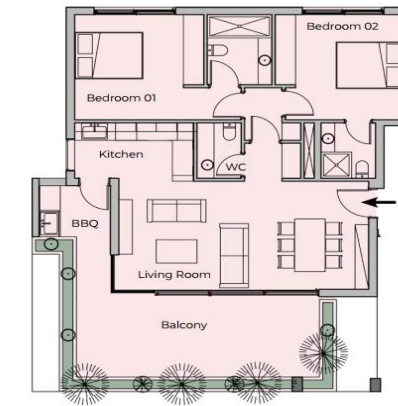
€560 000 on Mar 21, 2026





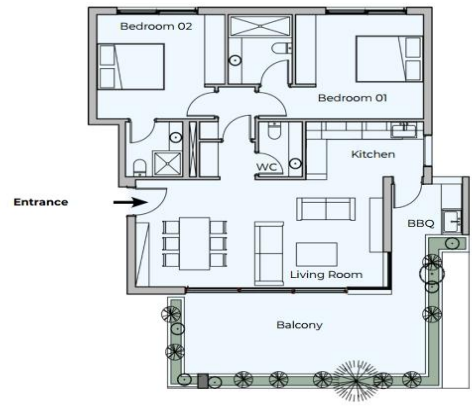


APARTMENTS
101 - 201 - 301



88.5m²
Indoor 25m²
Covered
Veranda 2
Beds

APARTMENTS
102 - 202 - 302



2
Beds 25m²
Covered
Veranda 88.5m²
Indoor