

1 Bedroom Apartment for Sale in Kiti, Larnaca District

One Bedroom Penthouse Apartment For Sale in Kiti, Larnaca – Title Deeds (New Build Process) Only 1 One bedroom penthouse apartment available !! – 302 A contemporary residential complex designed for modern living combines elegant architecture with comfort and practicality, creating a serene retreat in the heart of Kiti. Residents enjoy premium facilities including a gym, swimming pool, sauna, gym, lounge area and BBQ place. Where style meets tranquility, offering an elevated way of life. Set in the characterful area of Kiti, just outside Larnaca, these residences blends the serenity of open green landscapes with the comfort of refined modern living. ... ✖

Property Info

Plot / Area Info

Covered Area **58**

Additional info

Reference Number **khx016n1p/block**
 Property type **Apartment**
 Condition **Brand New**
 Bathrooms **2**

Amenities

Location

Location: Kiti Region: **Larnaca**
 Coordinates: **34.85 / 33.575**

Price: €240 000 + VAT

VAT for this property is **€12,000** or **€45,600**. VAT usually is 19%. If it is your first purchase of property, you can have VAT reduced to 5% for the first 150sq.m. of the property.

| | | | | | |
|-----|-----------------|--------------------|--------------------------------|-----------------|-------------|
| VAT | Excluded | Title transfer fee | None | Common expenses | None |
| | | Price per SQM | €4 138.00/m² | | |

Representative: Emerald Property Consultants

| | | | |
|---------------------|--------------|------------|-------------------------------|
| Registration number | 845 | Email | info@cyprusemerald.com |
| License number | 329/E | Legal name | N/A |
| Phone: +35723080080 | | | |

Price change history

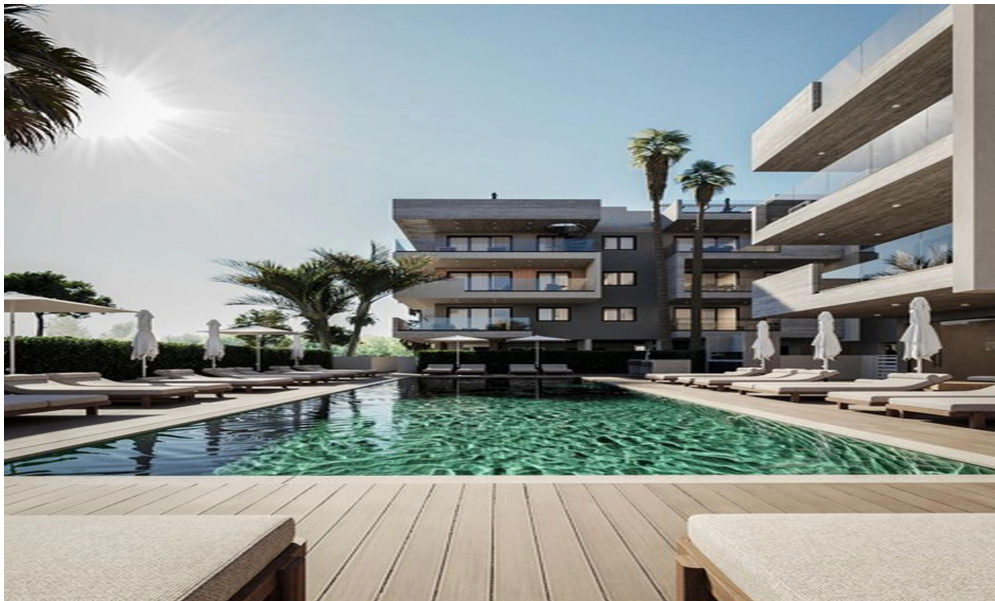
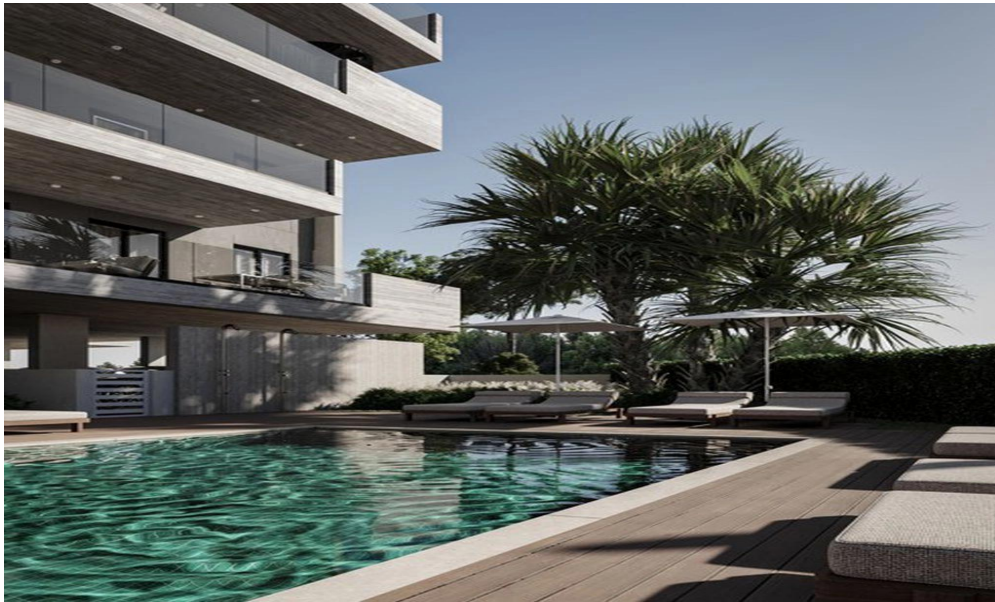
€240 000 on Mar 26, 2026



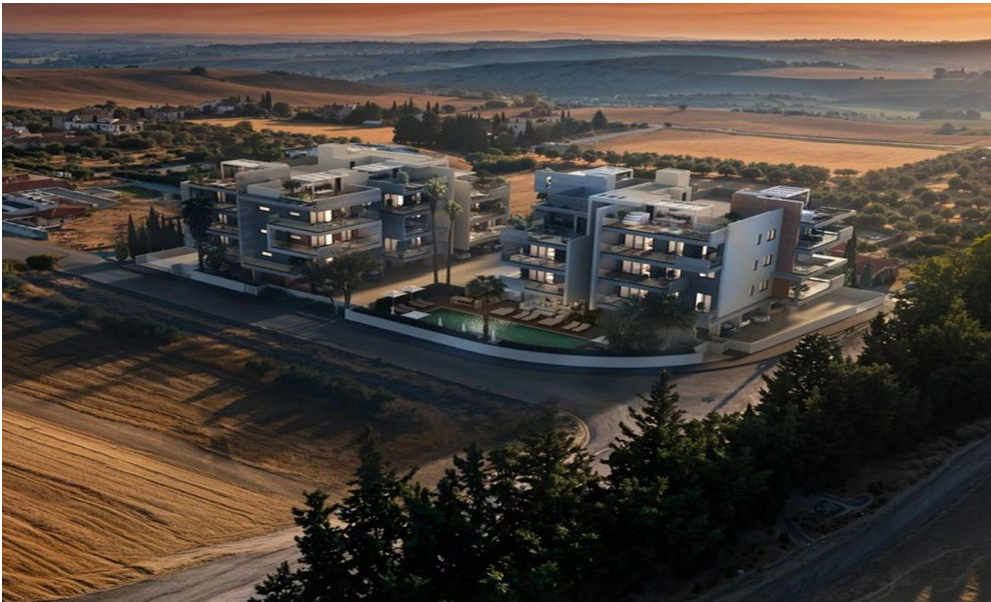






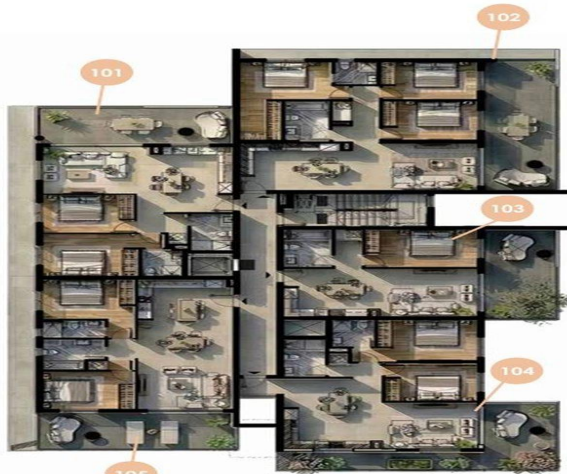






BLOCK A - FIRST FLOOR

- Apartment 101**
81m² covered living area
24m² veranda area
3m² storage room
2 bedrooms
2 bathrooms (1 en-suite)
1 parking
- Apartment 102**
106m² covered living area
32m² veranda area
2.3m² storage room
3 bedrooms
2 bathrooms (1 en-suite)
1 parking
- Apartment 103**
58.5m² covered living area
22m² veranda area
2.3m² storage room
1 bedroom
1 bathroom
1 parking
- Apartment 104**
86.5m² covered living area
29m² veranda area
2.4m² storage room
2 bedrooms
2 bathrooms (1 en-suite)
1 parking
- Apartment 105**
85.5m² covered living area
24.5m² veranda area
4.8m² storage room
2 bedrooms
2 bathrooms (1 en-suite)
1 parking



BLOCK A - ROOF GARDEN



BLOCK A - SECOND FLOOR

- Apartment 201**
81m² covered living area
24m² veranda area
4.6m² storage room
2 bedrooms
2 bathrooms (1 en-suite)
1 parking
- Apartment 202**
106m² covered living area
22.5m² veranda area
64m² roof garden
4.6m² storage room
3 bedrooms
2 bathrooms (1 en-suite)
1 parking
- Apartment 203**
58.5m² covered living area
12.5m² veranda area
2.5m² storage room
1 bedroom
1 bathroom
1 parking
- Apartment 204**
86.5m² covered living area
32.5m² veranda area
3.4m² storage room
2 bedrooms
2 bathrooms (1 en-suite)
1 parking
- Apartment 205**
85.5m² covered living area
24.5m² veranda area
5m² storage room
2 bedrooms
2 bathrooms (1 en-suite)
1 parking

