


2 Bedroom Apartment for Sale in Pyla, Larnaca District

This modern residential development offers a collection of ecological and energy-efficient apartments, thoughtfully designed to provide a superior standard of living. Located in a rapidly developing area of the Larnaca district, the project enjoys convenient access to the highway, just 17 km from Larnaca International Airport, 2 km from the beach, and 13 km from the city centre. 

The development comprises 27 apartments with 1, 2, and 3 bedrooms, including a selection of units with private gardens, rooftop terraces, and sea views, creating a diverse and well-balanced residential offering.

Built using innovative construction technologies, the project focuses on comfort, durabil...

Property Info

Covered Area	135
Covered Veranda	12
Floor Number	2
Total Number of Floors	2

Plot / Area Info

Parking **Covered, Yes**

Additional info

Reference Number	12746
Property type	Apartment
Condition	Under Construction
Bathrooms	1
View	Sea view

Amenities

- Roof Garden

Location

Location: Pyla Region: **Larnaca**
 Coordinates: **34.99586705 / 33.69335174**

Price: €338 375 + VAT

VAT for this property is **€16,919** or **€64,291**. VAT usually is 19%. If it is your first purchase of property, you can have VAT reduced to 5% for the first 150sq.m. of the property.

VAT	Excluded	Title transfer fee	None	Common expenses	None
		Price per SQM	€2 506.00/m²		

Representative: RealDeal Estates

Registration number	1311	Email	info@realdeal.cy
License number	347/E	Legal name	Esperia Estates (Limassol-Paphos) Limited
Phone: +35725255505, +35794001333			

Price change history

€338 375 on Apr 2, 2026

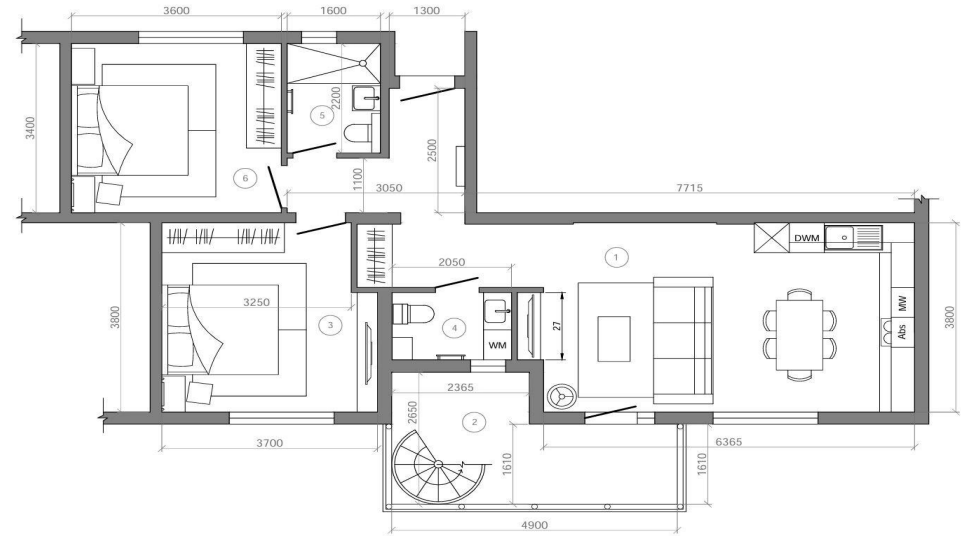
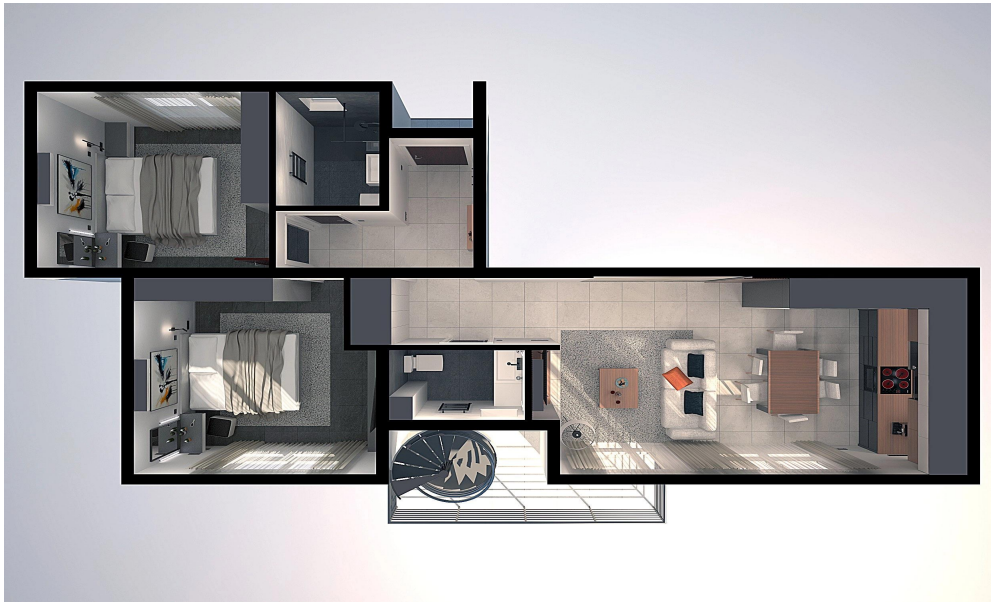












2nd floor

