

## 1 Bedroom Apartment for Sale in Pyla, Larnaca District

This modern residential development offers a collection of ecological and energy-efficient apartments, thoughtfully designed to provide a superior standard of living. Located in a rapidly developing area of the Larnaca district, the project enjoys convenient access to the highway, just 17 km from Larnaca International Airport, 2 km from the beach, and 13 km from the city centre. ✖

The development comprises 27 apartments with 1, 2, and 3 bedrooms, including a selection of units with private gardens, rooftop terraces, and sea views, creating a diverse and well-balanced residential offering.

Built using innovative construction technologies, the project focuses on comfort, durabil...

### Property Info

Covered Area	<b>94</b>
Covered Veranda	<b>7</b>
Floor Number	<b>2</b>
Total Number of Floors	<b>2</b>

### Plot / Area Info

Parking **Covered, Yes**

### Additional info

Reference Number	<b>12748</b>
Property type	<b>Apartment</b>
Condition	<b>Under Construction</b>
Bathrooms	<b>1</b>
View	<b>Sea view</b>

### Amenities

- Roof Garden

### Location

**Location:** Pyla Region: **Larnaca**  
 Coordinates: **34.99603404 / 33.69334102**

## Price: €216 400 + VAT

VAT for this property is **€10,820** or **€41,116**. VAT usually is 19%. If it is your first purchase of property, you can have VAT reduced to 5% for the first 150sq.m. of the property.

VAT	<b>Excluded</b>	Title transfer fee	<b>None</b>	Common expenses	<b>None</b>
		Price per SQM	<b>€2 302.00/m<sup>2</sup></b>		

## Representative: RealDeal Estates

Registration number	<b>1311</b>	Email	<b>info@realdeal.cy</b>
License number	<b>347/E</b>	Legal name	<b>Esperia Estates (Limassol-Paphos) Limited</b>
Phone: <b>+35725255505, +35794001333</b>			

## Price change history

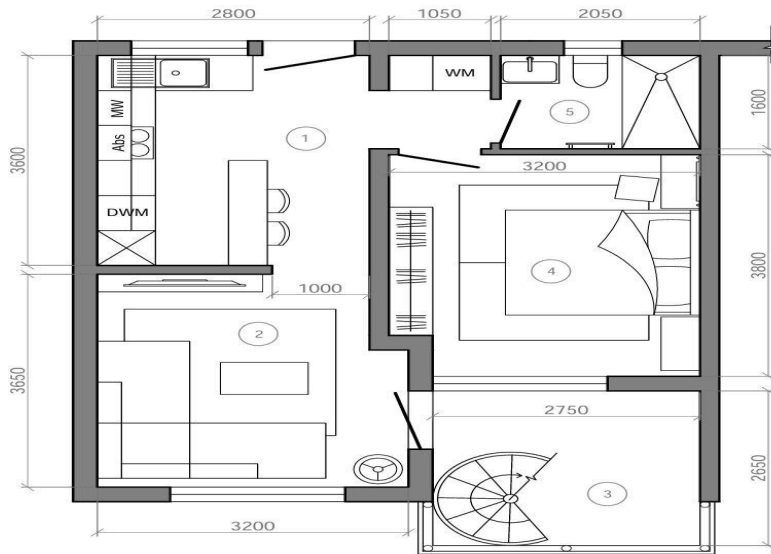
€216 400 on Apr 2, 2026











2nd floor

