

# 1 Bedroom Apartment for Sale in Tremithousa, Paphos District

A modern 1-bedroom apartment located in the scenic area of Tremithousa, Pafos, offering a peaceful lifestyle with contemporary comfort. 

Set within a well-designed residential development on an elevated position, the apartment enjoys panoramic views of the Mediterranean Sea. The interior features a bright, functional layout with quality finishes and a focus on energy efficiency.

Residents benefit from a resort-style setting with landscaped communal areas, fitness facilities, recreational spaces, and a secure gated environment.

### Key Features:

- 1-bedroom apartment
- Panoramic sea views
- Bright, functional layout
- Energy-efficient constru...

### Property Info

Covered Area **57**  
 Covered Veranda **7**  
 Total Number of Floors **2**

### Plot / Area Info

Pool **Common, Yes**  
 Parking **Uncovered, Yes**

### Additional info

Reference Number **12759**  
 Property type **Apartment**  
 Bathrooms **1**  
 View **Sea view**

### Amenities

- Parking

### Location

**Location:** Tremithousa Region: **Paphos**  
 Coordinates: **34.81809294 / 32.45404232**

## Price: €215 000 + VAT

VAT for this property is **€10,750** or **€40,850**. VAT usually is 19%. If it is your first purchase of property, you can have VAT reduced to 5% for the first 150sq.m. of the property.

VAT	<b>Excluded</b>	Title transfer fee	<b>~€5 200.00</b>	Common expenses	<b>None</b>
		Price per SQM	<b>€3 772.00/m<sup>2</sup></b>		

## Representative: RealDeal Estates

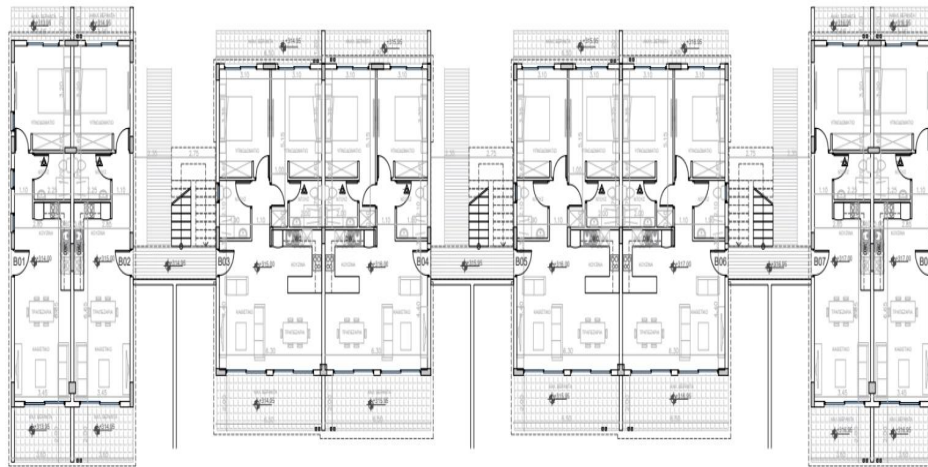
Registration number	<b>1311</b>	Email	<b>info@realdeal.cy</b>
License number	<b>347/E</b>	Legal name	<b>Esperia Estates (Limassol-Paphos) Limited</b>
Phone: <b>+35725255505, +35794001333</b>			

## Price change history

€215 000 on Apr 3, 2026







BLOCK B - ΚΑΤΟΨΗ ΙΣΟΓΕΙΟΥ