


2 Bedroom Apartment for Sale in Tremithousa, Paphos District

A modern 2-bedroom apartment located in the scenic area of Tremithousa, Pafos, offering a perfect balance of peaceful village living and contemporary comfort. 

Positioned within a thoughtfully designed residential development on an elevated site, the apartment enjoys panoramic views of the Mediterranean Sea. The property features a bright, well-planned layout with quality finishes and a focus on energy efficiency and long-term sustainability.

Residents benefit from a resort-style environment with concierge services, indoor and outdoor gyms, landscaped communal areas, BBQ and recreational spaces, as well as sports and children’s facilities. The gated community ensures privac...

Property Info

Covered Area
 Covered Veranda
 Floor Number
 Total Number of Floors

88
13
1
2

Plot / Area Info

Pool
 Parking

Common, Yes
Uncovered, Yes

Additional info

Reference Number
 Property type
 Bathrooms
 View

12770
Apartment
2
Sea view

Amenities

- Parking

Location

Location: Tremithousa
 Coordinates: **34.81809294 / 32.45404232**

Region: **Paphos**

Price: €305 000 + VAT

VAT for this property is **€15,250** or **€57,950**. VAT usually is 19%. If it is your first purchase of property, you can have VAT reduced to 5% for the first 150sq.m. of the property.

VAT	Excluded	Title transfer fee	~€8 800.00	Common expenses	None
		Price per SQM	€3 466.00/m²		

Representative: RealDeal Estates

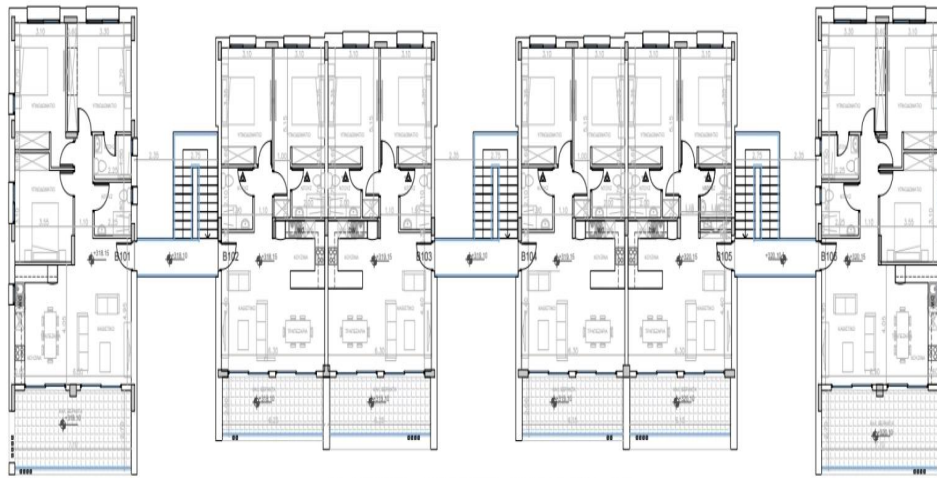
Registration number	1311	Email	info@realdeal.cy
License number	347/E	Legal name	Esperia Estates (Limassol-Paphos) Limited
Phone: +35725255505, +35794001333			

Price change history

€305 000 on Apr 3, 2026







BLOCK B - ΚΑΤΩΦΗ 1ΟΥ ΟΡΟΦΟΥ