

2 Bedroom Apartment for Sale in Germasogeia, Limassol District

2 bedroom apartments in a new complex located on a green hillside in a quiet area of Germasogeia, Limassol. One of the key features of Germasogeia is its proximity to the beaches of Limassol, as well as accessibility to various amenities such as restaurants, cafes, shops, supermarkets, schools. The complex is an architectural work designed by leading design studios and interiors embodying a cosmopolitan lifestyle. Apartments with one, two and three bedrooms blend harmoniously with the surrounding nature and offer stunning views of the city and the sea. The building has a secure gated entrance, covered parking spaces, a clean swimming pool, a terrace, two high-speed elevators, individual s...

Property Info

Covered Area **93**
 Furnishing **Unfurnished**
 Energy Efficiency **A**
 Air Conditioning **All rooms, Yes**

Plot / Area Info

Parking **Covered, Yes**

Additional info

Reference Number **210748**
 Property type **Apartment**
 Condition **Brand New**
 Bathrooms **2**

Amenities

Location

Location: Germasogeia Region: **Limassol**

Price: €455 000 + VAT

VAT for this property is **€22,750** or **€86,450**. VAT usually is 19%. If it is your first purchase of property, you can have VAT reduced to 5% for the first 150sq.m. of the property.

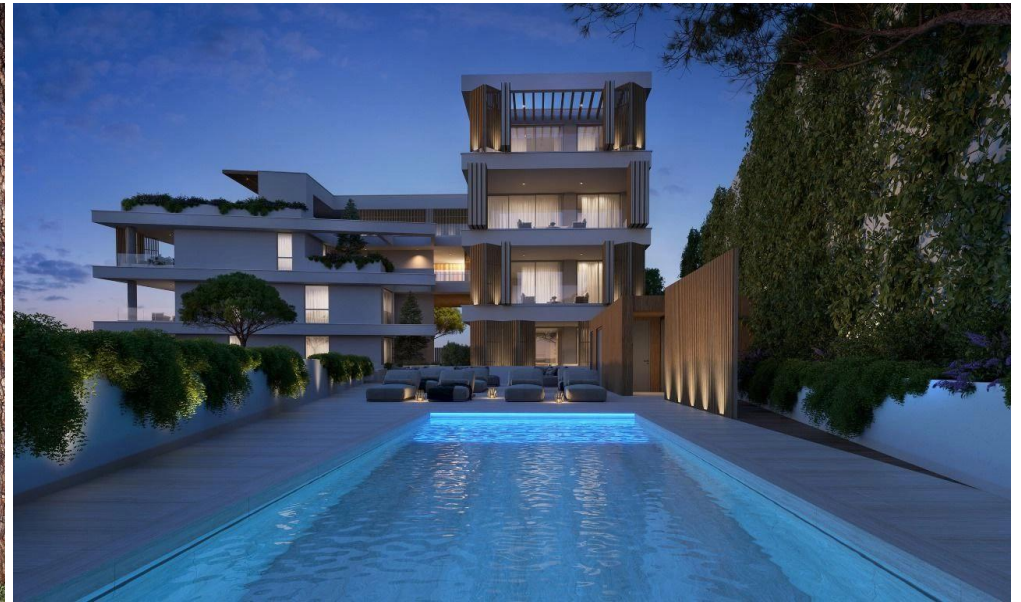
VAT	Excluded	Title transfer fee	None	Common expenses	None
		Price per SQM	€4 892.00/m²		

Representative: DOM Real Estate

Registration number	397	Email	info@dom.com.cy
License number	338/E	Legal name	N/A
Phone: +35796644888			

Price change history

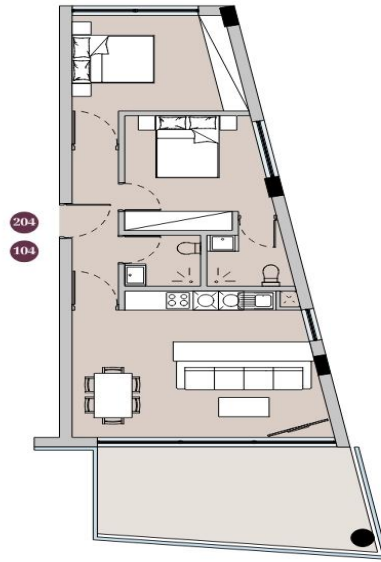
€455 000 on Apr 9, 2026



APTS 104, 204
Plan

2 Bedroom Apartment

Block	B	B
View	Garden	Garden
Front	N-E-S	Direct Sea View
Bedrooms	2	2
Apartment Number	104	204
Living Area	75 m ²	75 m ²
Covered Veranda / Roof Garden	18 m ²	18 m ²
Total Living Area	93 m ²	93 m ²
Uncovered Veranda / Garden	-	-
Total Apartment Area	93 m ²	93 m ²
Parking Place	1	1
Storage	10 m ²	8 m ²
Total Area	103 m ²	101 m ²



GROUND FLOOR
Plan



FIRST FLOOR
Plan