

## 2 Bedroom Apartment for Sale in Germasogeia, Limassol District

2 bedroom apartments in a new complex located on a green hillside in a quiet area of Germasogeia, Limassol. One of the key features of Germasogeia is its proximity to the beaches of Limassol, as well as accessibility to various amenities such as restaurants, cafes, shops, supermarkets, schools. The complex is an architectural work designed by leading design studios and interiors embodying a cosmopolitan lifestyle. Apartments with one, two and three bedrooms blend harmoniously with the surrounding nature and offer stunning views of the city and the sea. The building has a secure gated entrance, covered parking spaces, a clean swimming pool, a terrace, two high-speed elevators, individual s...

### Property Info

Covered Area **122**  
 Furnishing **Unfurnished**  
 Energy Efficiency **A**  
 Air Conditioning **All rooms, Yes**

### Plot / Area Info

Parking **Covered, Yes**

### Additional info

Reference Number **210747**  
 Property type **Apartment**  
 Condition **Brand New**  
 Bathrooms **2**

### Amenities

#### Location

**Location:** Germasogeia Region: **Limassol**

## Price: €540 000 + VAT

VAT for this property is **€27,000** or **€102,600**. VAT usually is 19%. If it is your first purchase of property, you can have VAT reduced to 5% for the first 150sq.m. of the property.

VAT	<b>Excluded</b>	Title transfer fee	<b>None</b>	Common expenses	<b>None</b>
		Price per SQM	<b>€4 426.00/m<sup>2</sup></b>		

## Representative: DOM Real Estate

Registration number	<b>397</b>	Email	<b>info@dom.com.cy</b>
License number	<b>338/E</b>	Legal name	<b>N/A</b>
Phone: <b>+35796644888</b>			

## Price change history

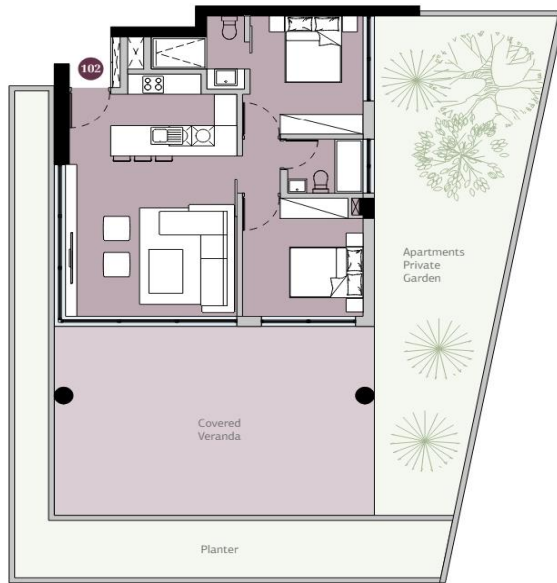
€540 000 on Apr 9, 2026



**APT 102**  
*Plan*

**2 Bedroom**  
**Apartment**

Block	A
View	Garden / Pool
Front	N-E-S
Bedrooms	2
Apartment Number	102
Living Area	75 m <sup>2</sup>
Covered Veranda / Roof Garden	47 m <sup>2</sup>
Total Living Area	122 m <sup>2</sup>
Uncovered Veranda / Garden	52 m <sup>2</sup>
Total Apartment Area	174 m <sup>2</sup>
Parking Place	1
Storage	8 m <sup>2</sup>
Total Area	182 m <sup>2</sup>



**GROUND FLOOR**  
*Plan*



**FIRST FLOOR**  
*Plan*