

## 1 Bedroom Apartment for Sale in Germasogeia, Limassol District

1 bedroom apartments in a new complex located on a green hillside in a quiet area of Germasogeia, Limassol. One of the key features of Germasogeia is its proximity to the beaches of Limassol, as well as accessibility to various amenities such as restaurants, cafes, shops, supermarkets, schools. The complex is an architectural work designed by leading design studios and interiors embodying a cosmopolitan lifestyle. Apartments with one, two and three bedrooms blend harmoniously with the surrounding nature and offer stunning views of the city and the sea. The building has a secure gated entrance, covered parking spaces, a clean swimming pool, a terrace, two high-speed elevators, individual s...

### Property Info

Covered Area	<b>63</b>
Furnishing	<b>Unfurnished</b>
Energy Efficiency	<b>A</b>
Air Conditioning	<b>All rooms, Yes</b>

### Plot / Area Info

Parking **Covered, Yes**

### Additional info

Reference Number	<b>210746</b>
Property type	<b>Apartment</b>
Condition	<b>Brand New</b>
Bathrooms	<b>2</b>

### Amenities

#### Location

**Location:** Germasogeia Region: **Limassol**

## Price: €295 000 + VAT

VAT for this property is **€14,750** or **€56,050**. VAT usually is 19%. If it is your first purchase of property, you can have VAT reduced to 5% for the first 150sq.m. of the property.

VAT	<b>Excluded</b>	Title transfer fee	<b>None</b>	Common expenses	<b>None</b>
		Price per SQM	<b>€4 683.00/m<sup>2</sup></b>		

## Representative: DOM Real Estate

Registration number	<b>397</b>	Email	<b>info@dom.com.cy</b>
License number	<b>338/E</b>	Legal name	<b>N/A</b>
Phone: +35796644888			

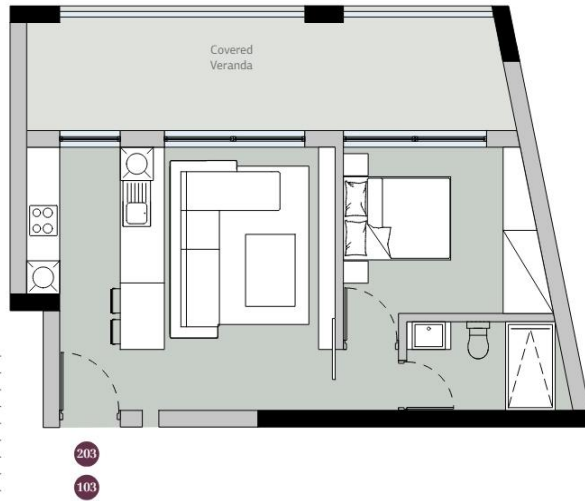
## Price change history

€295 000 on Apr 9, 2026



## 1 Bedroom Apartment

Block	B	B
View	Garden	Corner Sea View
Front	W	W
Bedrooms	1	1
Apartment Number	103	203
Living Area	50 m <sup>2</sup>	50 m <sup>2</sup>
Covered Veranda / Roof Garden	13 m <sup>2</sup>	13 m <sup>2</sup>
Total Living Area	63 m <sup>2</sup>	63 m <sup>2</sup>
Uncovered Veranda / Garden	-	-
Total Apartment Area	63 m <sup>2</sup>	63 m <sup>2</sup>
Parking Place	1	1
Storage	10 m <sup>2</sup>	8 m <sup>2</sup>
Total Area	73 m <sup>2</sup>	71 m <sup>2</sup>



GROUND FLOOR  
*Plan*



FIRST FLOOR  
*Plan*