


2 Bedroom Apartment for Sale in Oroklini, Larnaca District

Brand New, 2 Bedroom Flat with Large Veranda & Common Pool in Oroklini, Larnaca. Set on a peaceful and tranquil environment, close to several amenities such as shops, restaurants and school. With easy access to the highway and a 15-minute drive to Larnaca city. 

Second floor apartment for sale in Oroklini, Larnaca. It consists of an open plan kitchen- living-dining area, a main bathroom with shower, two bedrooms-one of them en suite and large covered/uncovered veranda. The apartment has allocated covered parking, storage.

The residents have access to the development's common swimming pool.

The apartment is part of an exclusive development that features 7 premium...

Property Info

Covered Area
Air Conditioning

75
All rooms, Yes

Plot / Area Info

Pool
Parking

Yes
Covered, Yes

Additional info

Reference Number
Property type
Condition
Bathrooms

55705
Apartment
Brand New
2

Amenities

- Elevator

Location

Location: Oroklini
Coordinates: **34.972994043557 / 33.652340621999**

Region: **Larnaca**

Price: €250 000 + VAT

VAT for this property is **€12,500** or **€47,500**. VAT usually is 19%. If it is your first purchase of property, you can have VAT reduced to 5% for the first 150sq.m. of the property.

| | | | | | |
|-----|-----------------|--------------------|--------------------------------|-----------------|-------------|
| VAT | Excluded | Title transfer fee | None | Common expenses | None |
| | | Price per SQM | €3 333.00/m² | | |

Representative: Kalogirou Real Estate

| | | | |
|----------------------------|--------------|------------|-------------------------------------|
| Registration number | 1104 | Email | info@kalogirourealestate.com |
| License number | 569/E | Legal name | N/A |
| Phone: +35724003723 | | | |

Price change history

€250 000 on Apr 23, 2026

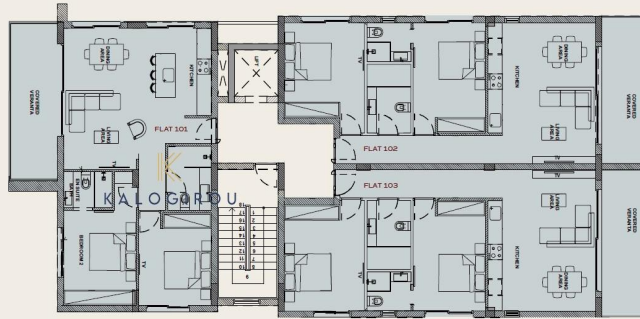






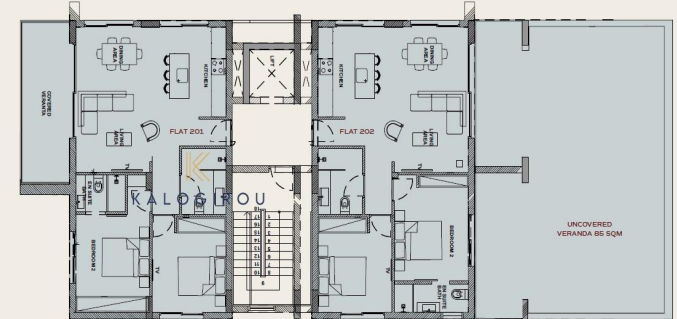


FLOOR PLAN | 1st FLOOR



| FLAT NO. | BEDS | BATHS | COVERED AREA | COVERED VERANDA | UNCOVERED VERANDA | TOTAL AREA SQM | COVERED PARKING | POOL | STORAGE |
|----------|------|-------|--------------|-----------------|-------------------|----------------|-----------------|------|---------|
| 101 | 2 | 2 | 75sqm | 12sqm | - | 87sqm | 1 | YES | YES |
| 102 | 2 | 2 | 75sqm | 12sqm | - | 87sqm | 1 | YES | YES |
| 103 | 2 | 2 | 75sqm | 12sqm | - | 87sqm | 1 | YES | YES |

FLOOR PLAN | 2nd FLOOR



| FLAT NO. | BEDS | BATHS | COVERED AREA | COVERED VERANDA | UNCOVERED VERANDA | TOTAL AREA SQM | COVERED PARKING | POOL | STORAGE |
|----------|------|-------|--------------|-----------------|-------------------|----------------|-----------------|------|---------|
| 201 | 2 | 2 | 75sqm | 12sqm | - | 87sqm | 1 | YES | N/A |
| 202 | 2 | 2 | 75sqm | 25sqm | 74sqm | 174sqm | 1 | YES | N/A |

FLOOR PLAN | 3rd FLOOR



| FLAT NO. | BEDS | BATHS | COVERED AREA | COVERED VERANDA | ROOF GARDEN | TOTAL AREA SQM | COVERED PARKING | POOL | STORAGE |
|----------|------|-------|--------------|-----------------|-------------|----------------|-----------------|------|---------|
| 301 | 2 | 2 | 75sqm | 12sqm | 47sqm | 134sqm | 1 | YES | N/A |
| 302 | 2 | 2 | 75sqm | 25sqm | 50sqm | 150sqm | 1 | YES | N/A |