

## 4 Bedroom Apartment for Sale in Limassol - Agios Athanasios

4+1 bedroom penthouse with roof garden for sale in Agios Athanasios, Limassol. The complex has a total of 167 apartments, ranging from standard apartments to penthouses, as well as apartments with private gardens. All rooms offer stunning sea views and panoramic views of the city. Modern architecture is complemented by landscape design inspired by nature, high-quality materials and exquisite interiors. The complex has everything you need for a comfortable stay: a gym, a spa center, a sauna, a massage room, a functional training area, a yoga and stretching area, an indoor pool, an outdoor pool, a multi-space, a cafe and a bar, a coworking space, an event space, a cinema room, an outdoor ter...

### Property Info

Covered Area	<b>534</b>
Furnishing	<b>Unfurnished</b>
Energy Efficiency	<b>A</b>
Air Conditioning	<b>No</b>

### Plot / Area Info

Parking	<b>Covered, Yes</b>
---------	---------------------

### Additional info

Reference Number	<b>214151</b>
Property type	<b>Apartment</b>
Condition	<b>Under Construction</b>
Bathrooms	<b>2</b>

### Amenities

#### Location

**Location:** Limassol - Agios Athanasios Region: **Limassol**

**Price: €1 895 000 + VAT**

VAT for this property is **€285,528** or **€360,050**. VAT usually is 19%. If it is your first purchase of property, you can have VAT reduced to 5% for the first 150sq.m. of the property.

VAT	<b>Excluded</b>	Title transfer fee	<b>None</b>	Common expenses	<b>None</b>
		Price per SQM	<b>€3 549.00/m<sup>2</sup></b>		

**Representative: DOM Real Estate**

Registration number	<b>397</b>	Email	<b>info@dom.com.cy</b>
License number	<b>338/E</b>	Legal name	<b>N/A</b>
Phone: <b>+35796644888</b>			

**Price change history**

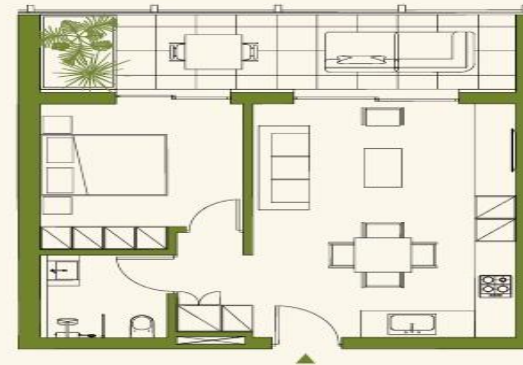
€1 895 000 on May 1, 2026



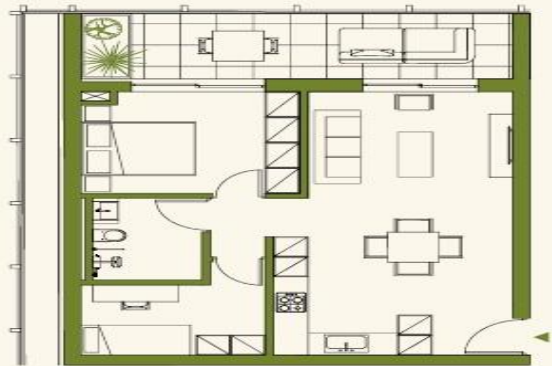


**Two-Bedroom  
Apartments with a Garden**

<b>94 m<sup>2</sup></b> Internal area	<b>27 m<sup>2</sup></b> Covered veranda	<b>from 168 m<sup>2</sup></b> Plot area
------------------------------------------	--------------------------------------------	--------------------------------------------



<b>51 m<sup>2</sup></b> Internal area	<b>16 m<sup>2</sup></b> Covered veranda
------------------------------------------	--------------------------------------------



<b>66 m<sup>2</sup></b> Internal area	<b>16 m<sup>2</sup></b> Covered veranda
------------------------------------------	--------------------------------------------